

Aktuelle Aktivitäten in der MIG-T

Pornpak Khunatorn | iStock / Getty Images Plus | Getty Images

INSPIRE-Infoveranstaltung, 09.11.2023

Koordinierungsstelle GDI-DE

Daniela Högbe

www.gdi-de.org | www.geoportal.de | https://twitter.com/GDI_DE

Übersicht

1. Aktivitäten des JRC im Kontext „Green Deal Data Space“
2. Neue MIG Action 2.5 zum „Alignment“ von DVO-HVD und INSPIRE
3. Nutzung von Geopackage im Rahmen des Reporting zur Umgebungslärmrichtlinie
4. INSPIRE Registry: neue Terms of References, neuer Governance Workflow und neue Release-Strategie
5. INSPIRE Geoportal: Status Rollout des neuen Systems
6. Governance of INSPIRE Artefacts: aktuelle Änderungsvorschläge

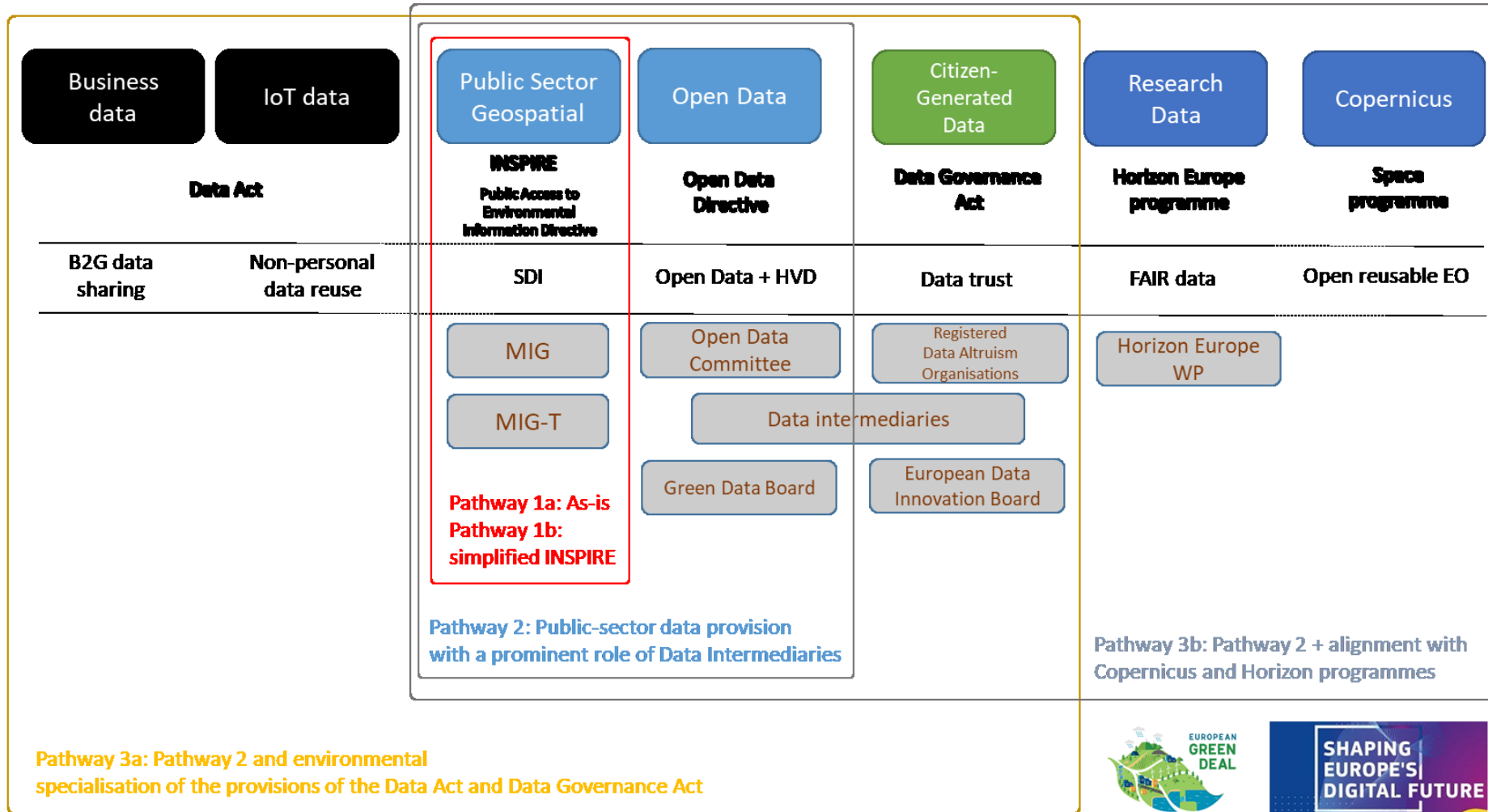
JRC Policy Brief: Ex-ante policy development pathways for the European Green Deal Data Space legal instrument(s)

- Diskussionsbeitrag des JRC zu(r) möglichen Weiterentwicklung(en) der INSPIRE-Richtlinie
- Fokus liegt auf technischen und Governance-Aspekten
- Keine offizielle Position der KOM

The image shows the cover of a policy brief from the European Commission's Joint Research Centre (JRC). The title is "Beyond INSPIRE. Perspectives on the legal foundation of the European Green Deal Data Space". It features the European Commission logo and a blue header with the text "SCIENCE FOR POLICY BRIEF". Below the title, there is a "HIGHLIGHTS" section with three bullet points. The first bullet point states that the brief provides an initial reflection on legal interventions to facilitate the establishment of the Green Deal Data Space. The second bullet point mentions that the brief is aligned with the "A Europe Fit for the Digital Age" and "A European Green Deal" priorities. The third bullet point notes that the views expressed are not an official position of the Commission. Below the highlights, there is a section titled "What is the problem?" which discusses the need for better data sharing and the challenges of outdated legal frameworks. A QR code is located at the bottom left of the cover, and the URL <https://europa.eu/IHyf3mf> is written vertically on the right side.

➤ Quelle (adaptiert durch Michael Lutz, BMUV): Jordi Escriu, Marco Minghini, Alexander Kotsev: Ex-ante policy development pathways for the European Green Deal Data Space legal instrument(s). A JRC perspective. 75th MIG-T meeting

1. Aktivitäten des JRC im Kontext „Green Deal Data Space“



➤ Quelle: Jordi Escriu, Marco Minghini, Alexander Kotsev:
Ex-ante policy development pathways for the European Green Deal Data Space legal instrument(s). A JRC perspective. 75th MIG-T meeting

JRC Knowledge Base on Common European Data Spaces

- JRC Science for Policy Report



Abstract 4

Foreword 5

Acknowledgements 6

Executive summary 7

1 Introduction 10

1.1 Policy context: a Europe fit for the digital age 10

1.1.1 What is a common European data space? 11

1.1.2 Principles, requirements and features of a 12

1.1.3 Sector- and domain-specific common Europ 13

1.1.4 Key actors 14

1.2 A scientific perspective on setting up, operating i 15

1.2.1 Scope and intended audience 15

1.2.2 Synergies with other relevant initiatives 16

1.2.3 Components of the report 17

2 Identification of requirements for common E 18

2.1 High-level requirement identification 18

2.2 Technical perspective 19

2.3 Governance perspective 20

2.3.1 Goals of Governance: guidance and guardra 20

2.3.2 Governance: principles, practices and proces 21

2.3.3 Data Governance 22

2.3.4 Governance within and between common E 23

2.4 Relevant data sharing initiatives and component 24

3 Data sharing How-to guides 25

4 JRC dashboard on European data spaces 26

5 Discussion and conclusions 27

List of abbreviations 28

→ Table 3: List of technical and organisational How-to's.

	How-to Information Sheets	Data Space Theme
TECHNICAL	1 How can stakeholders benefit from synthetic data in a data space?	Synthetic data
	2 How to choose the best software stack for a data space?	Software stacks
	3 How to ensure clear access and use conditions for a dataset in a data space?	Licensing
	4 How to ensure that datasets shared by different actors in a data space can be used together?	Interoperability
	5 How to ensure that technical requirements and standards are being followed?	Data validation
	6 How to facilitate the discovery of data in a data space?	Data discoverability
	7 How to select the most appropriate standards for a data space?	Data standards
	8 How to ensure that digital resources and data are uniquely referenced in a data space?	Data registers
	9 How to provide access to data in a data space?	APIs for data access
	10 How to preserve privacy and protect personal data and sensitive business data in a data space?	Privacy enhancing technologies
ORGANISATIONAL	1 Which actors are providing what types of data in scope of a data space?	Data Actors
	2 How to foster a people-centred approach to data in a data space?	Citizen data
	3 How can business benefit from sharing data in a data space?	Benefits to business in data spaces
	4 How can governments access private sector data of public interest?	Accessing data (B2G)
	5 How can data transparency for AI systems be increased in a data space?	Transparency – AI data in data spaces
	6 How to leverage voluntary data sharing in a data space?	Voluntary data sharing
	7 Which legal aspects should be considered when creating, providing or using novel data-driven solutions in data spaces?	Legal

➤ <https://publications.jrc.ec.europa.eu/repository/handle/JRC129900>

JRC Knowledge Base on Common European Data Spaces

- Dashboard: Zuordnung von Forschungsarbeiten des JRC zu den Themen im Zusammenhang mit der gemeinsamen Nutzung von Daten und Datenräumen

INDEX	TITLE	YEAR
1226	Data management and sharing for collaborative science: lessons learnt from the Euromammals initiative	2021
1227	Federated cyberattack detection for IoT-enabled Smart Cities	2022
1228	Assessing future vulnerability and risk of humanitarian crises using climate change and population projections within the INFORM framework	2021
1229	Scientific, Technical and Economic Committee for Fisheries (STECF) – Evaluation of Joint Recommendations on the landing obligation and on Technical Measures Regulation (STECF-22-05)	2022
1230	Scientific, Technical and Economic Committee for Fisheries (STECF) – 70th Plenary Report (PLEN-22-02)	2022
1231	Data quality requirements for inclusive, non-biased and trustworthy AI	2022
1232	Regulatory learning in experimentation spaces	2022
1233	Sandboxing. How to use it to strengthen your local data ecosystem	2022
1234	JRC Bioinformatics datasets	2021
1235	A roadmap for the generation of benchmarking resources for antimicrobial resistance detection using next generation sequencing.	2022
1236	Recent advancements in automated vehicle certification: how the experience from the nuclear sector contributed to making them a reality	2022
1237	An efficient framework to estimate the state of charge profiles of hydro units for large-scale zonal and nodal pricing models	2022
1238	CATCH – Characterization of Automated Tape Composites at High strain rate	2022
1239	Disaster Risk Data Hub	2022
1240	Intrusion Detection based on Privacy-preserving Federated Learning for the Industrial IoT	2023
1241	Analysis of the Reports on 2020 Targets under Article 27 of the Governance Regulation – Energy Efficiency	2022
1242	China 2.0 - Status and Foresight of EU-China Trade, Investment and Technological Race	2022
1243	Challenges in the geo-processing of big soil spatial data	2022

➤ <https://jeodpp.jrc.ec.europa.eu/eu/dashboard/voila/render/DataSpaces/JRCResourcesData.ipynb>

JRC Knowledge Base on Common European Data Spaces

- Wiki: JRC Data Spaces Knowledge Base

European Commission

JRC Data Spaces Knowledge Base

Alles erweitern Alles ausblenden

- > 1. Introduction
- > 2. Technical Requirements
- > 3. Governance
- > 4. JRC How To's - Information Sheets
- > 5. JRC Knowledge Base
- Contact Us

Common European Data Spaces

Explore the JRC scientific insights for understanding, setting up, operating, maintaining and scaling European data spaces

LET JRC TAKE YOU ON A DATA SPACE JOURNEY

The Joint Research Centre (JRC) has compiled an accessible knowledge understanding, setting up, operating, maintaining and scaling Europe: data sharing and utilisation at scale, can help translate policy conceptual for implementation.

This space is a translation of the report into an online avenue which can guide and lessons learned, all arranged in a practical and useful method for each user.

As the in-house European Commission science and knowledge service, the JRC provides the common European data spaces through the provision of independent advice. The JRC, in particular, has a multi-year experience in supporting data-related policies.

EXPLORE THE DATA SPACE JOURNEY INTO THE KNOWLEDGE BASE

JRC REPORT	JRC DASHBOARD	JRC CATALOGUE	JRC REFERENCES
The report distils technical & organisational lessons learned on European data spaces	Publicly available research by the JRC on topics related to data sharing and data spaces	JRC datasets and their metadata are made publicly available and searchable	A comprehensive list of relevant reading on data spaces for all users
Read more	Explore more	Search more	Learn more

EXPLORE THE HOW TO's

TECHNICAL	ORGANISATIONAL
Explore who the data space actors are and how to connect them keeping in mind elements of interoperability, licensing, privacy, standards and more.	Learn how government and business share data, understand legal parameters and AI and citizen approaches towards data spaces
Explore more	Learn more

➤ <https://wikis.ec.europa.eu/display/jrcdataspaceswiki/JRC+Data+Spaces+Knowledge+Base>

Action 2.5 mandate

Themen/Aufgaben

- Priorisierung von Daten gemäß HVD unter Berücksichtigung der vorhandenen Liste der prioritären Datensätze (Sommer 2024)
- Vereinfachung der technischen Regeln für die Veröffentlichung und den Zugriff auf Datensätze unter INSPIRE und HVD --> Handlungsempfehlungen (Good-Practice, „fact sheets“) (Q1/2024)
- Anpassung der Berichterstattung (Monitoring & Reporting) (Sommer 2024)

Erwartete Ergebnisse

- Liste der prioritären Datensätze und mögliche Anwendungsfälle
- INSPIRE Good-Practice-Dokumente („fact sheets“) für die einmalige Veröffentlichung raumbezogener Daten
- Empfehlungen für die Folgenabschätzung zur Fortschreibung der INSPIRE-Richtlinie (GreenData4All)

Organisation

- Temporäre sub-group unter der Leitung der Europ. Kommission, bei Bedarf können weitere Experten hinzugezogen werden

Rahmenbedingungen

- **Good-Practice-Dokumente** zur Dokumentation von Umsetzungsempfehlungen
- Änderungen des gesetzlichen Rahmens --> **GreenData4All**
- Ziel: gemeinsame Umsetzung von HVD und INSPIRE mit der **größtmöglichen Nachnutzung bestehender Implementierungen von INSPIRE**
- mehr INSPIRE-Datensätze unter einer **Open-Data-Lizenz**
- Einbindung der **Open Data Community**
- Die Umsetzung von INSPIRE allein erfüllt nicht zwangsläufig alle Anforderungen der DVO-HVD

Aktuelle Ideen / Tendenzen der Europ. Kommission

Metadaten/Kennzeichnung von HVD

- DCAT-AP wird für die Kennzeichnung von HVD eine [Codeliste](#) zur Beschreibung der HVD-Kategorien nutzen
- Idee: Ergänzung der Liste der Prioritären Datensätze (PDS) um HVD, so dass PDS = HVD plus InVeKoS- (IACS-)Datensätze --> Mapping der Keywords auf die HVD-Kategorien

Lizenzierung

- Idee: bei der Fortschreibung der INSPIRE-Richtlinie könnte die Verpflichtung zur Verwendung von offenen Lizenzen aufgegriffen werden (GreenData4All)

Zugänglichkeit

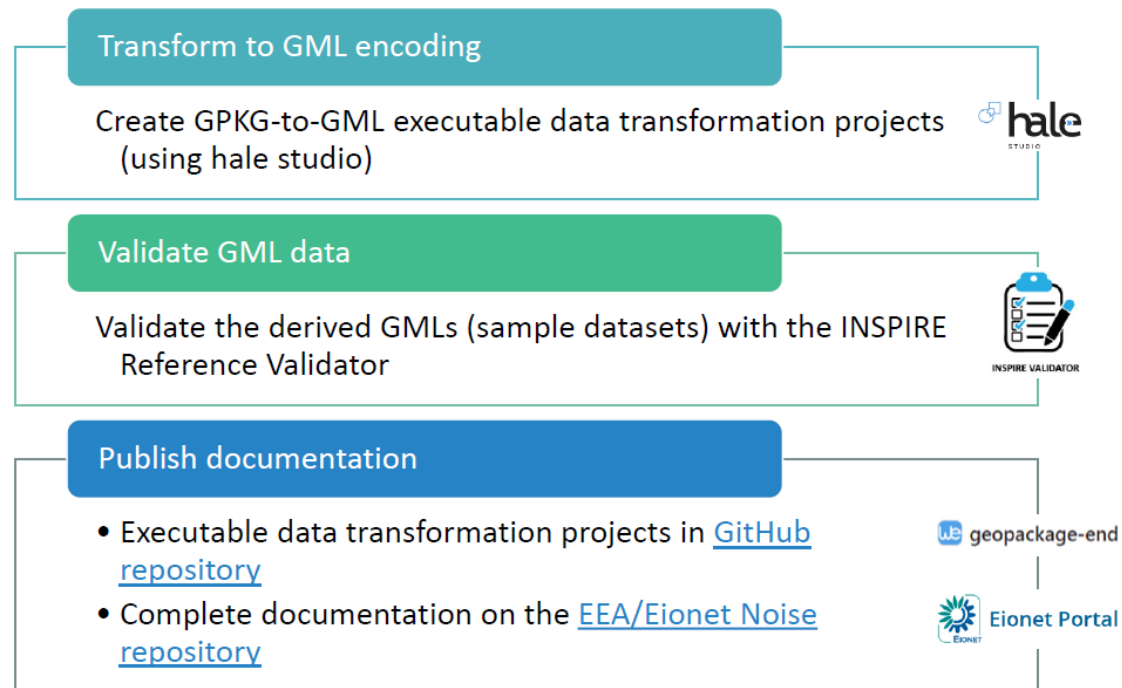
- Standards, die die Anforderungen an APIs und Massendownload erfüllen: WFS, WCS, SOS, OGC API-Features
- ATOM Feeds erfüllen aus Sicht der Europ. Kommission nur die Anforderungen an den Massendownload, aber nicht die Anforderungen der DVO-HVD an APIs

Berichterstattung

- Anpassung der Berichterstattung von INSPIRE an die Berichterstattung der DVO-HVD
- Neuer Berichtszyklus: Durchführung des Monitoring & Reporting nur noch alle zwei Jahre ab 2025

END e-reporting: Validierung und Dokumentation von Geopackage-Daten

- Geodaten für die Umgebungslärmrichtlinie werden auf Grundlage des INSPIRE Good Practice „[GeoPackage encoding of INSPIRE datasets](#)“ bereitgestellt



- Für alle Datenflüsse wurden GPKG-to-GML Transformationsprojekte (in hale studio) erstellt.
- Die erzeugten GML-Daten (sample) wurden mit dem INSPIRE Validator validiert (themenspezifische Conformance Klassen).
- Dokumentation im Eionet Portal:
<https://www.eionet.europa.eu/reportnet/docs/noise/inspire-validation>
 - Transformationsprojekte GPKG-to-GML
 - Mapping-Tabellen (GPKG templates > INSPIRE Datenmodelle)
 - GML-Datensätze (sample)
 - Testberichte für die GML-Datensätze (sample)

➤ Quelle: [75th MIG-T meeting, EEA](#)

END e-reporting: Validierung und Dokumentation von Geopackage-Daten

- Die „[Reporting Guidelines](#)“ zur Umgebungslärmrichtlinie enthalten jeweils Empfehlungen und Beispiele zur Beschreibung der Daten mit INSPIRE-konformen Metadaten.
- Vorschlag zur Dokumentation der Nutzung des GPKG-Formats und zur Dokumentation des Validierungsergebnisses (übertragbar auf alle alternativen Encodings):

Document use of the GPKG format

```
<gmd:distributionFormat>
  <gmd:MD_Format>
    <gmd:name>
      <gmx:Anchor
xlink:href="https://www.eionet.europa.eu/reportnet/docs/noise/templates/df1_5/agglomeration_source.gpkg/@@download/file/AgglomerationSource.gpkg">END
GeoPackage Template DF1_5 AgglomerationSource</gmx:Anchor>
      </gmd:name>
    <gmd:version>
      <gco:CharacterString>1.0</gco:CharacterString>
    </gmd:version>
    <gmd:specification>
      <gmx:Anchor
xlink:href="https://www.eionet.europa.eu/reportnet/docs/noise/guidelines/geopackage-encoding-rule-end.pdf">GeoPackage Encoding Rule for Environmental Noise Directive Reporting Data
      </gmx:Anchor>
    </gmd:specification>
  </gmd:MD_Format>
</gmd:distributionFormat>
```

Document conformance result

```
<gmd:report>
  <gmd:DQ_DomainConsistency>
    <gmd:evaluationProcedure>
      <!-- def: 'reference to the procedure information'. Insert here the link to the online document that contains the description of the executable data transformation project and gives access to it. -->
      <gmd:CI_Citation>
        <gmd:title>
          <gmx:Anchor xlink:href="link to the document with the executable GPKG-to-GML transformation project">GPKG-to-GML executable transformation project from DF1_5 Agglomeration Source to INSPIRE AM</gmx:Anchor> </gmd:title> ...
        <!-- insert below the reference date(s) of the document -->
        <gmd:date>
          <gco:Date>2023-03-04</gco:Date>
        </gmd:date>
        <gmd:dateType>
          <gmd:CI_DateTypeCode
codeList="http://standards.iso.org/iso/19139/resources/gmxCodeLists.xml#CI_DateTypeCode"
codeListValue="publication">Publication</gmd:CI_DateTypeCode>
          </gmd:dateType>
        </gmd:CI_Date>
      </gmd:date>
    </gmd:CI_Citation>
  </gmd:evaluationProcedure>
  <gmd:result>
    <gmd:DQ_ConformanceResult> ....
```

- Aktuell in der [Diskussion](#) > Feedback ist sehr willkommen 😊

➤ Quelle: [75th MIG-T meeting, EEA](#)

INSPIRE Registry: neue Terms of References

3. The **control body** role and related activities are commissioned to the **INSPIRE Maintenance and Implementation Group (MIG)**, which may **delegate them to its permanent technical sub-group (MIG-T)**. The MIG shall monitor the progress of the above-mentioned activities during its regular (either physical or virtual) meetings and provide guidance when needed, particularly for issues, that may have far-reaching consequences for INSPIRE implementation in the Member States. The European Commission shall chair these activities.
3. Each country represented in the MIG shall nominate a **submitting organisation**, typically an organisation representing the country in the MIG / MIG-T or another organisation involved in the coordination of the INSPIRE implementation in that country. In addition, the members of the INSPIRE Coordination Team (Directorates General AGRI, ENV, ESTAT, JRC, and the EEA) shall be submitting organisations.
4. MIG representatives **shall regularly (e.g. once a year) update the list of representatives** for their appointed submitting organization.

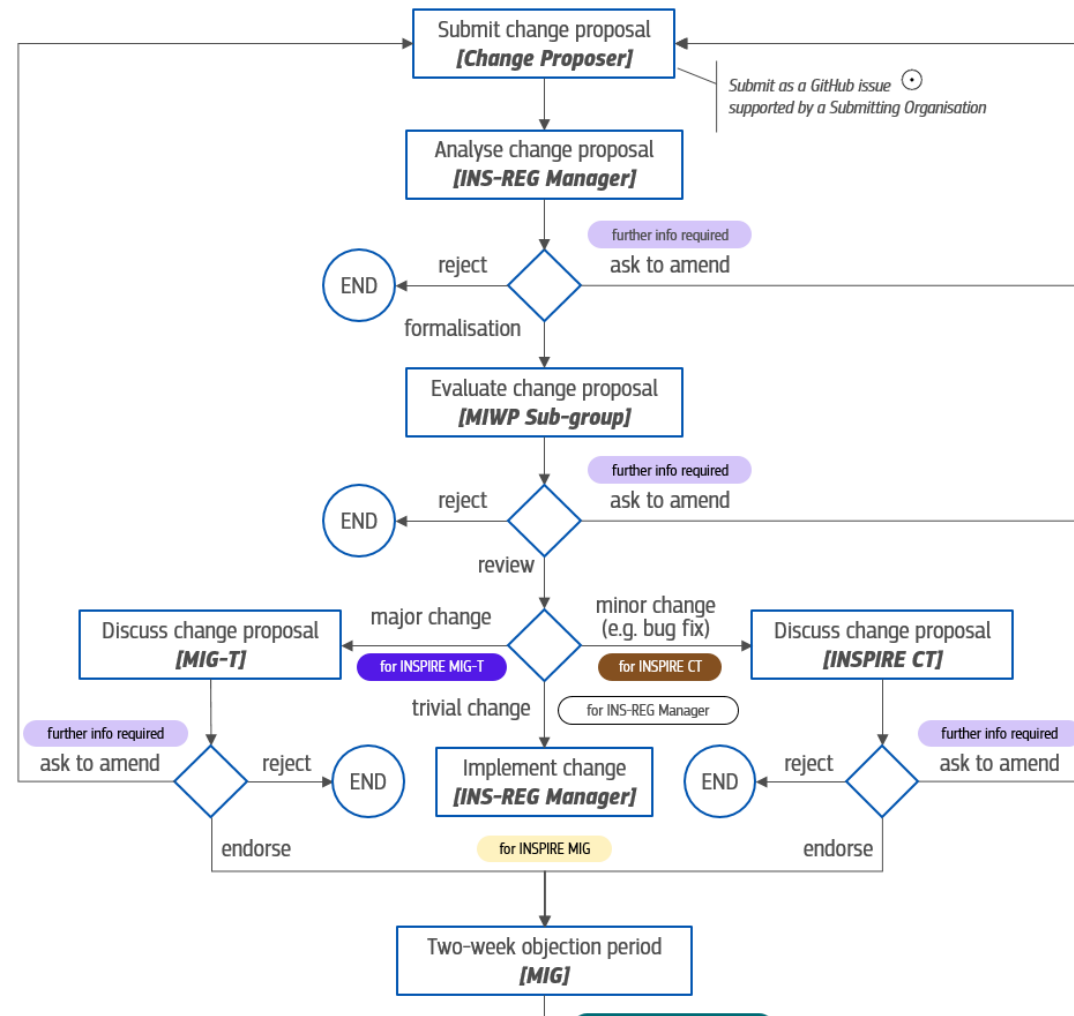
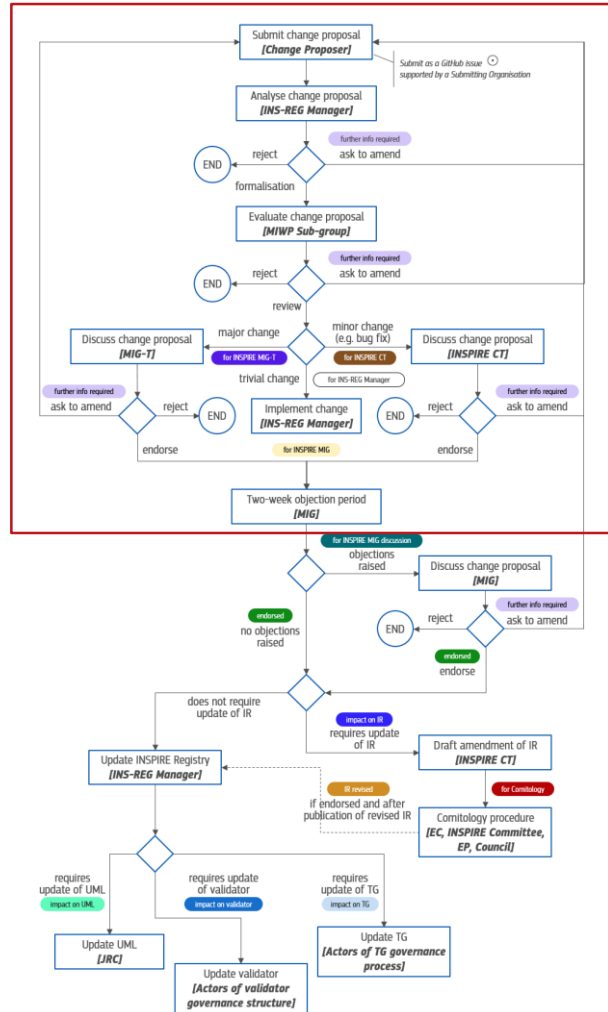
➤ <https://github.com/INSPIRE-MIF/helpdesk-registry/blob/main/registry-control-body-and-submitting-organisations.md>

INSPIRE Registry - Submitting Organisations

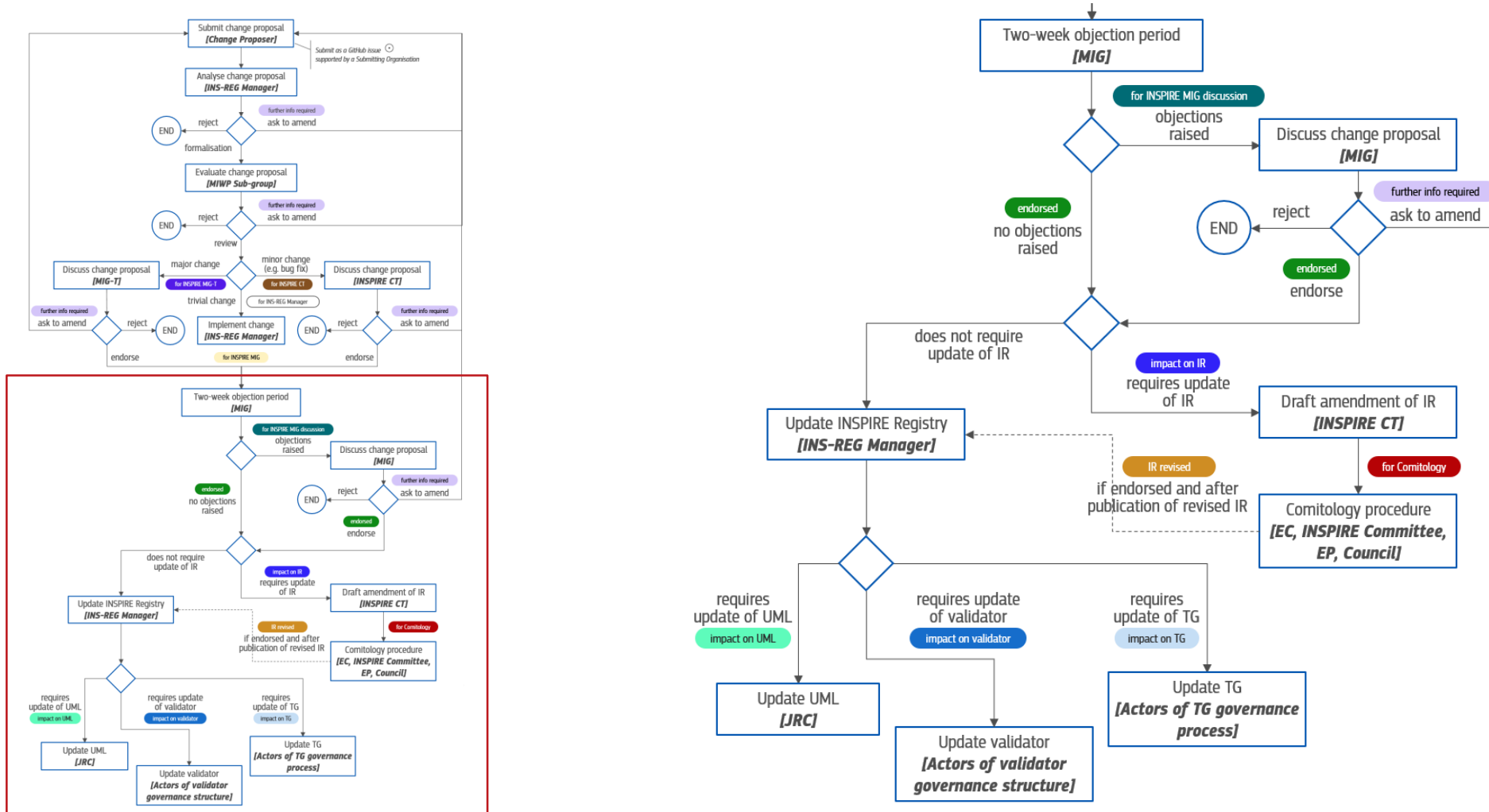
The table below lists the members of the Submitting Organisations for the [INSPIRE Registry](#). Additional members can be [proposed here](#).

Country	Organisation	Point of contact	E-mail	Github UserID
AT	Umweltbundesamt (Environment Agency Austria)	Christine Brendle	christine.brendle@umweltbundesamt.at	
BE	Belgian INSPIRE Coordination Comite	Ouns Kissiyar	ouns.kissiyar@kb.Vlaanderen.be	
CY	Department of Lands and Surveys	Mr Andreas Hadjiraftis	ahadjiraftis@dls.moi.gov.cy	
CZ	CENIA Czech Environmental Information Agency	Lenka Rejentová	lenka.rejentova@cenia.cz	
DE	Federal Agency for Cartography and Geodesy	Jane Heller	contact-eu-registry@bkg.bund.de	jane-heller-bkg

INSPIRE Registry: neuer Governance Workflow



INSPIRE Registry: neuer Governance Workflow



INSPIRE Registry: neue Release-Strategie

- Angelehnt an die Release-Planung der INSPIRE Artefakte
- Zwei Releases pro Jahr: 31. Januar und 31. Juli

2023.2 28/07/2023 Latest Compare

arantzaetxebarria released this Jul 28 · 1 commit to main since this release · 2023.02 · f0227ec

Release of version [2023.02](#) of the INSPIRE Registry

New features:

- [#32](#) Add a new item in the ProtocolValue register for OGC API-Features
- [#23](#) Add localisation for Italian and German in the metadata code list 'Conditions Applying To Access and Use'
- [#33](#) Issues with Soil Codelists
- [#16](#) Duplication of labels in the code list "Classification of spatial data services"

Assets 2

Source code (zip)	Jul 28
Source code (tar.gz)	Jul 28

➤ <https://github.com/INSPIRE-MIF/helpdesk-registry/tree/main/release%20strategy>

INSPIRE Registry: aktuelle Änderungsvorschläge

➤ <https://github.com/INSPIRE-MIF/helpdesk-registry/issues?q=is%3Aopen+label%3A%22for+Sub-group%22+is%3Aissue>

4 Open ✓ 0 Closed	Author ▾	Label ▾	Projects ▾	Milestones ▾	Assignee ▾	Sort ▾
<p>🕒 Country Named Authority List from the Metadata Registry of the Publications Office - External Reference Link not resolvable change proposal for Sub-group under analysis</p> <p>#34 opened on May 13, 2022 by jescriu</p>						3
<p>🕒 INSPIRE layer register change proposal for Sub-group</p> <p>#28 opened on Feb 1, 2022 by ArvidsO 📅 2024.1</p>						3
<p>🕒 Several Survey Type labels not matching their definition change proposal for Sub-group</p> <p>#14 opened on Apr 1, 2021 by lvdbrink 📅 2024.1</p>						5
<p>🕒 INSPIRE schema cannot be found via GUI of INSPIRE Registry change proposal for Sub-group</p> <p>#6 opened on Feb 3, 2021 by Anja-AjLo 📅 2024.1</p>						2

Never-ending-story?

The screenshot shows a GitHub issue thread. The main comment from user 'jescriu' (commented 3 weeks ago) addresses '@hogredan' and '@bayerfa'. It explains that the GeoNetwork harvesting console and MS/countries users have been disabled for the rollout. It mentions that all endpoints were harvested except for a few with accessibility issues, which will be resolved bilaterally. A secondary comment from 'jescriu' (commented 2 weeks ago) identifies the user as a 'Maintainer' and addresses the 'Community'. The thread includes a screenshot of a web interface showing a list of harvested records for various countries (DE, DK, EE, EL, ES) and a pie chart titled 'Type of resources' with a legend: Dataset (4833), Series (71054), Application (1), INSPIRE-Geoportal-Dataset (1), Series (334), Software (3), and Site (1).

- Erfolgreiches Harvesting des deutschen Katalogs in einer geklonten Instanz Ende September
- Für die Bereitstellung der Metadaten im INSPIRE Geoportal ist weiteres Harvesting in der Produktivumgebung notwendig
- Seit zwei Wochen ist die Harvesting Konsole (für alle MS) gesperrt aufgrund von Sicherheitsanalysen im Rahmen des Rollout des neuen Systems
- Ziel: Abschluss des Rollout bis zum INSPIRE Monitoring 2023

➤ <https://github.com/INSPIRE-MIF/helpdesk-geoportal/issues/147>

Technical Guidance Dokumente

➤ <https://github.com/INSPIRE-MIF/technical-guidelines/issues?q=is%3Aopen+label%3A%22for+Sub-group%22+is%3Aissue>

7 Open	1 Closed	Author	Label	Projects	Milestones	Assignee	Sort
🕒							
🕒			for Sub-group				
#115 opened on Jul 13 by thomruhl							
🕒			for Sub-group	impact on validator			🔗 1
#112 opened on Jul 1 by heidivanparys							
🕒			for Sub-group	impact on validator			🔗 1
#110 opened on Jul 1 by heidivanparys							
🕒			for Sub-group	impact on validator			🔗 1
#108 opened on Jun 30 by heidivanparys							
🕒			for Sub-group	impact on validator			🔗 1
#105 opened on May 18 by heidivanparys							
🕒			for INSPIRE MIG-T	for Sub-group	impact on IR	impact on schemas	impact on UML
#84 opened on Dec 22, 2022 by bfrichet3							
🕒			for Sub-group	impact on validator			🔗 1
#82 opened on Dec 21, 2022 by heidivanparys							

Bereitstellung der INSPIRE TGs auf Github

➤ <https://github.com/INSPIRE-MIF/technical-guidelines>

Status [↗](#)

All INSPIRE TGs will be converted from the original pdf format to the AsciiDoc format and published in this repository, according to the order and timing defined in the [conversion plan](#).

Currently, the following TGs have been converted:

- Metadata
 - [Metadata-iso19139](#) (PDF, HTML)
- Services
 - [Discovery Services](#) (PDF, HTML)
 - [Download Services](#) (PDF, HTML)
 - [View Services](#) (PDF, HTML)
- Data
 - [Administrative Units](#) (PDF, HTML)
 - [Coordinate reference systems](#) (PDF, HTML)
 - [Elevation](#) (PDF, HTML)
 - [Environmental Monitoring Facilities](#) (PDF, HTML)
 - [Geographical Grid Systems](#) (PDF, HTML)
 - [Geology](#) (PDF, HTML)
 - [Hydrography](#) (PDF, HTML)
 - [Land Cover](#) (PDF, HTML)
 - [Land Use](#) (PDF, HTML)
 - [Orthoimagery](#) (PDF, HTML)
 - [Protected Sites](#) (PDF, HTML)
 - [Soil](#) (PDF, HTML)
 - [Species Distribution](#) (PDF, HTML)
 - [Statistical Units](#) (PDF, HTML)
 - [Utility and Government Services](#) (PDF, HTML)



Neu: Quick-Links zu den PDF- und HTML-Versionen

Aktuell Probleme beim Preview von großen AsciiDoc-Dateien auf Github

➤ Empfehlung JRC: PDF- und HTML-Versionen nutzen bis Problem behoben ist

Kompetenz durch Kooperation

alphaspirit | iStock/ Getty Images Plus | Getty Images

Koordinierungsstelle GDI-DE

Bundesamt für Kartographie und Geodäsie
Richard-Strauß-Allee 11
60598 Frankfurt

Kontakt

mail@gdi-de.org
Tel. +49 (0) 69 6333-258

www.gdi-de.org | www.geoportal.de | https://twitter.com/GDI_DE