



INSPIRE

Infrastructure for Spatial Information in Europe

Guidelines for the encoding of spatial data

Title	D2.7: Guidelines for the encoding of spatial data, Version 3.3
Status	Version for Annex II/III data specifications v3.0
Creator	INSPIRE Drafting Team "Data Specifications"
Date	2014-04-08
Subject	Guidelines for the encoding of spatial data
Publisher	INSPIRE Drafting Team "Data Specifications"
Type	Text
Description	Guidelines for the encoding of spatial data
Contributor	Members of the INSPIRE Drafting Team "Data Specifications", INSPIRE Spatial Data Interest Communities & Legally Mandated Organisations, INSPIRE Consolidation Teams and other Drafting Teams
Format	Portable document format (pdf)
Source	INSPIRE Drafting Team "Data Specifications"
Rights	Public
Identifier	D2.7_v3.3
Language	En
Relation	n/a
Coverage	Project duration

Table of contents

Foreword	1
Introduction.....	3
1 Scope.....	6
2 Conformance.....	6
3 Normative references	6
4 Terms and abbreviations	6
4.1 Terms	6
4.2 Abbreviations	7
4.3 Verbal forms for the expression of provisions.....	8
4.4 References within the document.....	8
5 Background and principles.....	9
5.1 Requirements as stated in the INSPIRE Directive.....	9
5.1.1 Articles of the Directive.....	9
5.1.2 Recitals in the Directive.....	10
5.2 A standards-based approach.....	10
5.3 Data interoperability components.....	10
5.4 Supported use cases.....	11
6 Encoding concepts	11
6.1 General remarks	11
6.2 Data interchange.....	11
6.3 Encoding rules	13
6.3.1 Concept	13
6.3.2 Input data structure	13
6.3.3 Output data structure.....	13
6.3.4 Conversion rules	13
6.3.5 Encoding service.....	14
6.3.6 Schema and instance level.....	14
7 Encoding rules in INSPIRE	14
7.1 General requirements.....	14
7.2 Default encoding rule	15
7.3 Additional encoding rules	16
7.4 Encoding of spatial object collections.....	17
7.5 Encoding of spatial data in a view service.....	17
7.6 Encoding of coverages	17
8 Guidelines for the encoding of updates	17
9 Rules for exchange metadata	18
Annex A (normative) Abstract Test Suite	19
A.1 Existence of a mandatory encoding rule	19
A.2 Completeness of each mandatory encoding rule.....	19
A.3 Conformance of each mandatory encoding rule.....	19
A.4 Application of the default encoding rule	19
Annex B (normative) Default encoding rule.....	20
B.1 General remark	20
B.2 Schema conversion.....	20
B.2.1 General rules	20
B.2.2 Conversion of the application schema to a GML-specific implementation schema.....	20
B.2.3 Extensions to the GML encoding rule	22

B.2.4	Restrictions on options in the GML encoding rule	26
B.2.5	XML namespaces	27
B.3	Instance conversion	27
B.3.1	Character encoding	27
B.3.2	Encoding of identifiers and references	27
B.3.3	Root element of the exchange document	28
B.4	Implementation aspects <informative>	28
Annex C (normative)	Resource identifiers	29
C.1	General remark	29
C.2	Use of URIs	29
C.3	Encoding of an external object identifier	30
C.4	Encoding of a reference to a spatial object	31
C.5	Encoding of a reference to a registered item	31
C.5.1	General rules	31
C.5.2	Code list values	32
C.6	Encoding of a thematic identifier	32
Annex D (informative)	Encoding of file-based data	34
D.1	Overview	34
D.2	Requirements	34
D.2.1	Need to retain existing efficient file formats	34
D.2.2	Need for interoperable representation	34
D.2.3	Conceptual modelling unconstrained by file formats	35
D.2.4	Ability to model file extracts	35
D.2.5	Ability to integrate logical structures across files	35
D.3	Proposed interoperability model – joint representation	35
D.4	Implementation	36
D.5	Issues	37
D.5.1	Complex transformation semantics	37
D.5.2	GML properties with simple content	37
D.5.3	Pilot project	37
Bibliography	38

INSPIRE Data Specifications	Reference: D2.7_v3.3		
Guidelines for the encoding of spatial data	2014-04-08	Page 1	

Foreword

INSPIRE is a Directive proposed by the European Commission in July 2004 setting the legal framework for the establishment of the Infrastructure for Spatial Information in the European Community, for the purposes of Community environmental policies and policies or activities which may have an impact on the environment.

INSPIRE should be based on the infrastructures for spatial information that are created and maintained by the Member States. The components of those infrastructures include: metadata, spatial data themes (as described in Annexes I, II, III of the Directive), spatial data services; network services and technologies; agreements on data and service sharing, access and use; coordination and monitoring mechanisms, processes and procedures.

The guiding principles of INSPIRE are that the infrastructures for spatial information in the Member States will be designed to ensure that spatial data are stored, made available and maintained at the most appropriate level; that it is possible to combine spatial data and services from different sources across the Community in a consistent way and share them between several users and applications; that it is possible for spatial data collected at one level of public authority to be shared between all the different levels of public authorities; that spatial data and services are made available under conditions that do not restrict their extensive use; that it is easy to discover available spatial data, to evaluate their fitness for purpose and to know the conditions applicable to their use.

The text of the INSPIRE Directive is available from the INSPIRE web site (<http://inspire.ec.europa.eu/>). The Directive identifies what needs to be achieved, and Member States had two years from the date of adoption (15th May 2007) to bring into force national legislation, regulations, and administrative procedures that define how the agreed objectives will be met taking into account the specific situation of each Member State. To ensure that the spatial data infrastructures of the Member States are compatible and usable in a Community and transboundary context, the Directive requires that common Implementing Rules (IR) are adopted in a number of specific areas. Implementing Rules should be adopted as Commission legal act and are binding in their entirety. The Commission is assisted in the process of adopting such rules by a regulatory committee composed by representatives of the Member States and European Parliament¹. The committee is chaired by a representative of the Commission (this is known as the Comitology procedure). The committee will be established within three months from the entry in force of the Directive.

The IR will be shaped in their legal structure and form by the Commission legal services on the basis of technical documents prepared by especially convened Drafting Teams, for each of the main components of INSPIRE: metadata, data specifications, network services, data and service sharing, and monitoring procedures. For data specifications, the technical documents for each spatial data theme will be prepared by especially convened Thematic Working Groups.

This document represents a contribution of the Data Specification Drafting Team.

The previous major version of this document (version 2.0) was published on the INSPIRE web site for public view and commenting by registered SDICs and LMOs. 217 comments were received and have been resolved to produce this version. The comment resolution process included a workshop with representatives of SDICs and LMOs. Based on the discussions, the Drafting Team "Data Specifications" proposed comment resolutions that were reviewed by the Consolidation Team. The table containing the comments and the resolution is available on the INSPIRE web-site at http://inspire.ec.europa.eu/implementingRulesDocs_ds.cfm.

This baseline version (version 3.3) is published on the INSPIRE web site and has been improved in close co-operation with the Thematic Working Groups for all Annex themes. The Thematic Working

¹ The implementing rules are formally adopted through the comitology procedure that has been amended by Council Decision of 17 July 2006 (2006/512/EC). Under the new regulation, the Parliament and the Council are on equal footing for all comitology procedures related to co-decision acts. As a consequence, all measures must be ratified by all three institutions to come into force.

INSPIRE Data Specifications		Reference: D2.7_v3.3
Guidelines for the encoding of spatial data	2014-04-08	Page 2

Groups have used the requirements and recommendations in this version to prepare the data specifications as input for the IR for the interoperability for spatial data sets and services. It is expected that this document will be updated during the next step of the data specification development and maintenance process, if requirements for changes are identified.

It is important to note that this document is not a draft Implementing Rule, but a document that is a basis for the development of the thematic data specifications that will serve as technical basis for the legal text of the INSPIRE Implementing Rules.

The document will be publicly available as a 'non-paper', as it does not represent an official position of the Commission, and as such can not be invoked in the context of legal procedures.

INSPIRE Data Specifications	Reference: D2.7_v3.3		
Guidelines for the encoding of spatial data	2014-04-08	Page 3	

Introduction

This document contains the baseline version of the guidelines for the encoding of spatial data (document identifier: D2.7).

One of the main tasks of the INSPIRE programme is to enable the interoperability and, where practicable, harmonisation of spatial data sets and services within Europe. Here, it is important to note that interoperability has to go beyond any particular community and has to take the various cross-community information needs into account. If one takes a look at the huge difference in the scope of the different themes (from reference systems to hydrography and from cadastral parcel to atmospheric conditions), the question does arise about the specific requirements of and for interoperability and harmonisation of the geographic information. These were also the questions faced by the Drafting Team "Data Specification" and one of the contributions of the Drafting Team is the identification of a set of *interoperability components*, which make the concepts of interoperability and harmonisation more tangible. Examples of interoperability components addressed in this document are: rules for application schemas, coordinate referencing and units model, identifier management, multi-lingual text and cultural adaptability, object referencing modelling, multiple representations (levels of detail) and consistency, and more. All these components do apply to (nearly) all themes identified within INSPIRE and this document together with the Generic Conceptual Model describes approaches to these shared components. Using this framework across the different themes will therefore result in a first level of interoperability.

It is important to note that "interoperability" is understood as providing access to spatial data sets as specified in Article 4 of the Directive through network services in a representation that allows for combining them with other such spatial data sets in a coherent way. This includes agreements about the different interoperability components. In other words, by enabling interoperability data can be used coherently, independent of whether the existing data set is actually changed (harmonised) or "just" transformed by a download service for publication in INSPIRE depending on the approach taken by the Member State. It is expected that these agreements will be based on existing data interoperability or harmonisation activities, whenever feasible and in-line with the environmental requirements.

The starting point for the development of INSPIRE data specifications is the input delivered by the LMOs and SDICs with their reference material and domain knowledge. Further and more specifically the foundation is formed by the internationally accepted standards reflecting the collective state-of-the-art knowledge (such as the reference model described in ISO 19101).

The individual themes (as defined in the Annexes I, II and III of the Directive and refined in document D2.3 'Definition of Annex Themes and Scope') have been and will be modelled based on document D2.5 'Generic Conceptual Model'. The result are data product specifications for the individual themes, i.e. conceptual information models that describe the relevant classes, their attributes, relationships, constraints, and possibly also operations as well as other appropriate information like data capturing information or data quality requirements. Care has to be taken that common or shared spatial object types relevant in multiple themes are identified and modelled in a consistent manner. This could then be considered a second level of interoperability: agreement on the shared (formal) semantics between the different themes. Note that the spatial characteristics of a spatial object will be represented by vector geometries, coverage functions and/or references to gazetteer entries.

The methodology (document D2.6) specifies how individual INSPIRE spatial data themes will be modelled based on the user requirements, the INSPIRE Generic Conceptual Model (document D2.5) and the relevant international standards. It provides a process model and tools to assist in the process. The document is applicable for INSPIRE data specifications. It is not required that it will be applied for the modelling of data specifications at the national level. What is important is that each Member State is able to transform existing data sets to the INSPIRE data specifications and publish the transformed data via network services. On the other hand, this methodology is expected to influence modelling activities at the national level, because it adds value to the national spatial data infrastructure and simplifies synchronisation with the INSPIRE data specifications.

How the geographic information will actually be encoded for the transfer process involved in download and other services giving access to data will be described in this document, the 'guidelines for the encoding of spatial data' - the third level of geographic information interoperability.

Besides the documents D2.3, D2.6, D2.7, D2.8.m.n², D2.9 and D2.10.m³ this document is also related to other INSPIRE documents and registers:

- The terms used in this document are drawn from the "INSPIRE Glossary".
- INSPIRE application schemas are based on the Generic Conceptual Model and will continue to be maintained in the "Consolidated INSPIRE UML model" that also includes the external schemas, for example, the harmonised model of the ISO 19100 series published by ISO/TC 211. INSPIRE application schemas are in the process of being developed for every theme listed in the annexes of the INSPIRE Directive.
- The "INSPIRE Feature Concept Dictionary Register" is used to manage the names, definitions and descriptions of all spatial object types used in INSPIRE application schemas. In the future, the register may be extended to manage properties, too.
- Other registers include a coordinate reference system register, a feature catalogue register and a code list register.
- The implementing rule on metadata and associated guidance documents.
- The implementing rules on network services and associated guidance documents.

Figure 1 below illustrates relationships from the point of view of the data specifications. The boxes denote INSPIRE Implementing Rule documents or supporting documents, the cylinders registries. The arrows denote dependencies, the areas with dashed boundaries denote areas of responsibility.

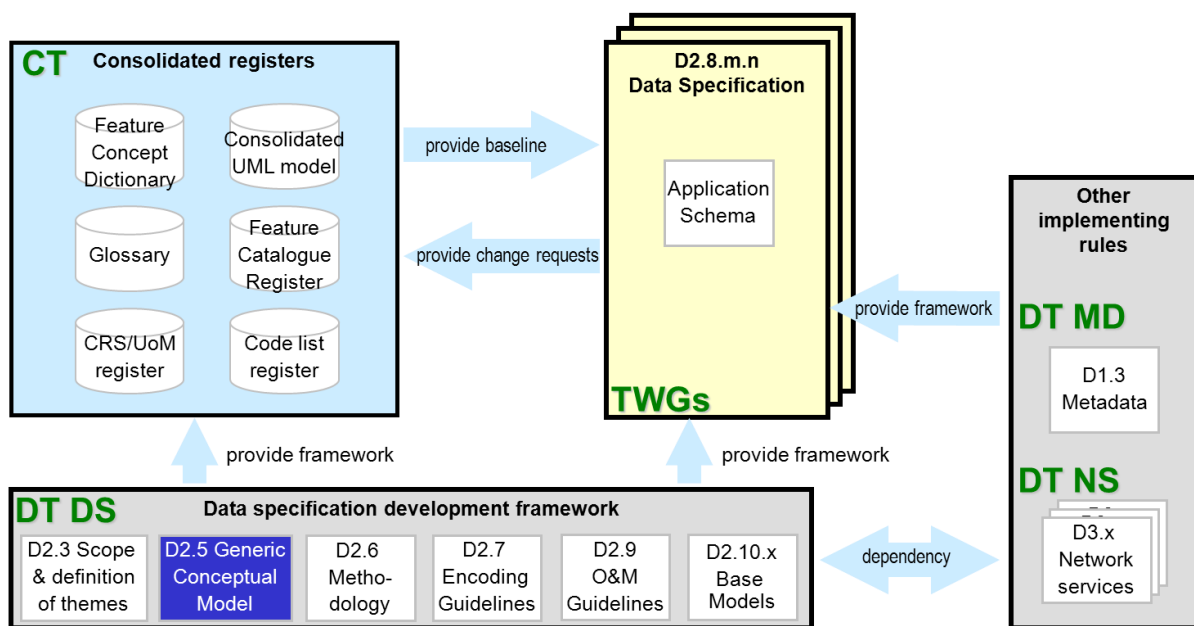


Figure 1 – The encoding guidelines as part of the data specification development framework

Since the conceptual modelling framework of INSPIRE is based in the ISO 19100 series of International Standards, in-depth knowledge about this series is required in every team developing an INSPIRE data specification.

The approach to encoding specified in this document can be summarised as follows:

- Conformant spatial data in INSPIRE conforms to the INSPIRE data specifications.
- The encoding of the spatial data in INSPIRE depends on the encoding rule chosen for the data.
- All valid encoding rules conform to ISO 19118.

² "m" is the number of the annex and "n" the sequential number of the theme within the annex.

³ Documents describing cross-theme INSPIRE application schemas imported by more than one theme.

INSPIRE Data Specifications		Reference: D2.7_v3.3
Guidelines for the encoding of spatial data	2014-04-08	Page 5

- A default ISO 19136 and ISO/TS 19139-based encoding is specified. Additional or alternative encoding rules may be specified for each application schema.
- The encoding rules and application-schema-specific data structure schemas used within INSPIRE are published in guidance documents.

Some open issues remain and require a decision or further discussion with the Member States implementing the requirements as well as the future users of the data, including:

- The specification of URI schemes for persistent identifiers in the infrastructure.
- The encoding of void values in XML.

INSPIRE Data Specifications	Reference: D2.7_v3.3		
Guidelines for the encoding of spatial data	2014-04-08	Page 6	

1 Scope

This document specifies requirements and recommendations for the encoding of spatial data for the purpose of data interchange between systems in INSPIRE. The focus of “data interchange” is understood by this document primarily as “access to data via services” which includes but is not limited to a download of a complete spatial data set.

The requirements and recommendations specified by this document are requirements and recommendations for encoding rules as specified by ISO 19118. These encoding rules will be specified in or referenced from INSPIRE data specifications.

NOTE 1 As a result, this document supports the development of the Implementing Rule on the interoperability of spatial data sets and associated guidance documents. The relevant requirements and recommendations stated in this document will be used to specify the necessary technical arrangements in those documents.

This document does not specify a mandatory encoding rule. The appropriate encoding rule(s) for each INSPIRE application schema will be determined based on the specific characteristics of the data.

This document also addresses the interchange of updates of spatial data – as required by point (e) of Article 8(2) of the INSPIRE Directive for (at least) all Annex I and II spatial data themes.

2 Conformance

This document specifies requirements INSPIRE data specifications. Every INSPIRE data specification shall pass the conformance test in Annex A.

3 Normative references

D2.5, INSPIRE Generic Conceptual Model, version 3.4

ISO 19118:2011, Geographic Information – Encoding

ISO 19136:2007, Geographic Information – Geography Markup Language (GML)

OGC 10-129r1, Geography Markup Language (GML) — Extended schemas and encoding rules (GML version 3.3)

IETF RFC 3986, Uniform Resource Identifier (URI): Generic Syntax, 2005, <http://www.ietf.org/rfc/rfc3986.txt>

ISO/TS 19139:2007, Geographic Information – Metadata – XML Schema implementation

ISO 19142:2010, Geographic information — Web feature service (WFS 2.0)

4 Terms and abbreviations

4.1 Terms

(1) application schema

conceptual schema for data required by one or more applications [ISO 19101]

(2) conversion rule

rule for converting instances in the input data structure to instances in the output data structure [ISO 19118]

INSPIRE Data Specifications	Reference: D2.7_v3.3	
Guidelines for the encoding of spatial data	2014-04-08	Page 7

(3) data interchange

delivery, receipt and interpretation of data [ISO 19118]

(4) data transfer

movement of data from one point to another over a medium [ISO 19118]

NOTE Transfer of information implies transfer of data.

(5) encoding

conversion of data into a series of codes [ISO 19118]

(6) encoding rule

identifiable collection of conversion rules that define the **encoding** for a particular data structure [ISO 19118]

NOTE An encoding rule specifies the types of data to be converted as well as the syntax, structure and codes used in the resulting data structure.

(7) open standard

standard that is adopted and will be maintained by a not-for-profit organization in an open decision-making procedure available to all interested parties, that is available, distributable and usable either freely or at a nominal fee, and where the intellectual property is made irrevocably available on a royalty-free basis.

(8) transfer format

structured representation of data in a file for transfer between systems

NOTE Typically, a machine readable schema will document the structure of the data in the transfer file.

EXAMPLE GML (ISO 19136) encodes the application schema in XML Schema.

(9) spatial data

data with a direct or indirect reference to a specific location or geographic area [INSPIRE Directive]

(10) spatial data set

identifiable collection of spatial data [INSPIRE Directive]

(11) transfer protocol

common set of rules for defining interactions between distributed systems [ISO 19118]

(12) update <spatial data>

modification of parts of a **spatial data set**

NOTE The interchange of a complete spatial data set to replace an older version of the spatial data set is not considered an update to distinguish the different mechanisms required to create and process partial updates.

4.2 Abbreviations

CEN	European Committee for Standardization
D2.3	INSPIRE document "Definition and scoping of the Annex themes"
D2.5	INSPIRE document "Generic Conceptual Model"
D2.6	INSPIRE document "Methodology for the development of data specifications"
D2.7	INSPIRE document "Guidelines for the encoding of spatial data"

GI	Geographic Information
GML	Geography Markup Language
IANA	Internet Assigned Numbers Authority
IETF	Internet Engineering Task Force
INSPIRE	INfrastructure for SPatial InfoRmation in Europe
IR	Implementing Rule
ISO	International Organisation for Standardisation
KML	(formerly: Keyhole Markup Language)
LMO	Legally Mandated Organisation
OGC	Open Geospatial Consortium
SDI	Spatial Data Infrastructure
SDIC	Spatial Data Interest Community
TR	Technical Report
TS	Technical Specification
UML	Unified Modelling Language
URI	Uniform Resource Identifier
URN	Uniform Resource Name
UTF	Unicode Transformation Format
XML	eXtensible Markup Language

4.3 Verbal forms for the expression of provisions

In accordance with the ISO rules for drafting, the following verbal forms shall be interpreted in the given way:

- “shall” / “shall not”: a requirement, mandatory for every data specification
- “should” / “should not”: a recommendation, but an alternative approach may be chosen for a specific case if there are reasons to do so
- “may” / “need not”: a permission

To make it easier to identify the mandatory requirements and the recommendations for INSPIRE data specifications in the text, they are highlighted and numbered.

Requirements for INSPIRE data specifications are shown using this style.

Recommendations for INSPIRE data specifications are shown using this style.

NOTE Annex C contains additional recommendations that do not have INSPIRE data specifications as their target, but use this style, too.

4.4 References within the document

In accordance with the ISO rules for drafting, references to highest level of the document structure include the word “Clause” (or “Annex” in case of an annex).

INSPIRE Data Specifications	Reference: D2.7_v3.3		
Guidelines for the encoding of spatial data	2014-04-08	Page 9	

EXAMPLE "Clause 2", "Annex A"

References to lower levels within the document structure are given without this qualifier.

EXAMPLE 7.1, 7.1.8.4, A.1

References to ISO standards are given without the full title.

EXAMPLE "ISO 19101" instead of "ISO 19101 – Geographic Information – Reference Model" or "ISO 19101 (Reference Model)"

5 Background and principles

5.1 Requirements as stated in the INSPIRE Directive

5.1.1 Articles of the Directive

5.1.1.1. General remarks

This sub-clause provides an overview of the articles in the Directive which are addressed by this proposal and describes how they are addressed. To make this sub-clause easier to read, the relevant paragraphs from Chapter III "Interoperability of spatial data sets and services" are repeated in the text in italics.

5.1.1.2. Article 7(1)

Implementing rules laying down technical arrangements for the interoperability and, where practicable, harmonisation of spatial data sets and services, designed to amend nonessential elements of this Directive by supplementing it, shall be adopted in accordance with the regulatory procedure with scrutiny referred to in Article 22(3). Relevant user requirements, existing initiatives and international standards for the harmonisation of spatial data sets, as well as feasibility and cost-benefit considerations shall be taken into account in the development of the implementing rules. Where organisations established under international law have adopted relevant standards to ensure interoperability or harmonisation of spatial data sets and services, these standards shall be integrated, and the existing technical means shall be referred to, if appropriate, in the implementing rules mentioned in this paragraph.

This document, together with documents D2.3, D2.5 and D2.6, is intended to facilitate the drafting process of the implementing rules referenced above. In particular, the documents D2.5 and D2.6 provide a common framework for developing the various INSPIRE data specifications in a harmonised way. Access to data in an interoperable way is understood to occur by invoking network services that return data in a representation that allows for combining it with other INSPIRE data in a coherent way. The guidelines specified in this document are intended to support an approach to encoding data to enable interoperability between systems.

In line with the standards-based approach taken in the common framework, encoding of data will be based on existing standards whenever possible.

This topic is discussed in more detail in D2.5 4.3.

5.1.1.3. Article 8

1. In the case of spatial data sets corresponding to one or more of the themes listed in Annex I or II, the implementing rules provided for in Article 7(1) shall meet the conditions laid down in paragraphs 2, 3 and 4 of this Article.

2. The implementing rules shall address the following aspects of spatial data:

INSPIRE Data Specifications	Reference: D2.7_v3.3	
Guidelines for the encoding of spatial data	2014-04-08	Page 10

...
 (e) updates of the data.

Since according to this article, the implementing rules shall address the topic of updates for (at least) all spatial data themes of Annexes I and II of the Directive, the topic is addressed by this document (see clause 8). Note that clause 8 may also be applied to all Annex III spatial data themes whose data models contain the necessary properties (e.g. lifecycle and/or version information).

5.1.2 Recitals in the Directive

Of the 35 recitals of the Directive, recital (6) is partially relevant for the technical specification of implementing rules on data specifications:

"The infrastructures for spatial information in the Member States should be designed to ensure

- *that spatial data are stored, made available and maintained at the most appropriate level;*
- *that it is possible to combine spatial data from different sources across the Community in a consistent way and share them between several users and applications;*
- *that it is possible for spatial data collected at one level of public authority to be shared between other public authorities [...]."*

This points out that the encoding guidelines in particular needs to address the topic of references to spatial data maintained, stored and made available by other parties. See B.3 for requirements on the encoding of references.

Also, recital (16) and (28) state that *"implementing rules should be based, where possible, on international standards [...]"* and that *"in order to benefit from the state of the art and actual experience of information infrastructures, it is appropriate that the measures necessary for the implementation of this Directive should be supported by international standards and standards adopted by European standardisation bodies."*

5.2 A standards-based approach

The statements in D2.5, sub-clause 4.2 apply to the encoding guidelines, too. This document extends this to the implementation level, i.e. in the context of data the supported encoding rules that will be specified will conform to international or European standards whenever possible.

5.3 Data interoperability components

The work on INSPIRE data specifications is based on a framework that identifies the components relevant to the interoperability and harmonisation of data. These components are introduced and described in the Generic Conceptual Model, sub-clause 4.3. The different components cover different aspects that need to be addressed in the process. For each of the components, a separate clause in document D2.5 specifies how this component is addressed in the Generic Conceptual Model.

This document in particular addresses the harmonisation component "Data Transfer" which is described as follows:

"This component will describe methods for encoding spatial data as well as information products.

"The encoding of spatial objects will in general be model-driven, i.e. fully determined by the application schema in UML. Where appropriate, existing encodings will continue to be used.

INSPIRE Data Specifications	Reference: D2.7_v3.3	
Guidelines for the encoding of spatial data	2014-04-08	Page 11

“To support network services that are implemented as web services, spatial objects are expected to be primarily encoded in GML and metadata according to ISO/TS 19139. Coverage data is expected to use existing encodings for the range part, e.g. for the pixels of an orthophoto.”

5.4 Supported use cases

The following use cases for the download of spatial data are supported by these guidelines:

- The download of a complete spatial data set, spatial data set series or a named subset of a spatial data set. In this case, the spatial data to be transferred is fully defined by the supplier. Access to the data occurs by identifier (of the spatial data set) via a download service.
- The download of a single spatial object. Access to the spatial object occurs by identifier (of the spatial object) via a download service.
- The download of a user-defined subset of a spatial data set. The subset is selected by a set of queries created by the client of a download service and submitted to the download service. Queries select spatial objects based on their spatial, temporal, thematic and metadata properties as specified in the INSPIRE data specifications. Spatial data meeting the selection criteria are then retrieved from the spatial data set and provided to the user.

EXAMPLE In the OGC Web Feature Service standard (ISO 19142), the GetFeature operation allows to query spatial objects based on selection criteria encoded using the Filter Encoding standard (ISO 19143).

- The download of updates of data since a user-specified date and time – based on life-cycle information in the data, if available.

In all cases, the download of the spatial data may potentially occur via the following modes:

- access to spatial data in form of a file by http URI
- synchronous or asynchronous online transfer of a response from a web service
- transfer of spatial data via physical media⁴

NOTE The use cases and download modes discussed in this clause include all modes identified by ISO 19109 for the data interchange between information systems.

The details of the modes supported by download services are specified in the Implementing Rule on the download service and associated guidance documents. INSPIRE data specifications may specify additional requirements and recommendations regarding the supported download modes and use cases for the data of a spatial data theme.

6 Encoding concepts

6.1 General remarks

The encoding process is discussed in detail in ISO 19118. This clause provides a description of the fundamental concepts of data interchange from this standard. The content of this clause is derived from Clause 6 of ISO 19118.

6.2 Data interchange

An overview of a data interchange is shown in Figure 2. System A wants to send spatial data to system B. Both systems, A and B, store data in an internal database according to an internal schema,

⁴ The reference material analysis indicates that delivery via mass storage media is still and will continue to be used in practice.

but the schemas are usually different. The following logical steps are taken in order to transfer spatial data from A's internal database to B's internal database.

1. The first step for system A is to translate its internal data into a data structure that is according to the common application schema I . This is done by defining a transformation from the concepts of the internal schema to the concepts of the application schema and by applying appropriate software to transform the data. In Figure 1 this mapping is denoted M_{AI} . The result is an application schema specific, but system dependent data structure i_A .
2. The next step is to use an encoding service, which applies the encoding rule R to create a data structure that is system independent and therefore suitable for transfer. This encoded dataset is called d and may be stored in a file system or transferred using a transfer service.
3. System A then invokes a transfer service to send the encoded dataset d to system B. The transfer service follows a transfer protocol for how to do packaging and how the actual transportation over an online or offline communication medium should take place.
4. The transfer service on system B receives the transferred data, and according to the protocol the dataset is unpacked and stored as an encoded dataset d , e.g. on an intermediate file.
5. In order to get an application schema specific data structure i_B , system B applies the inverse encoding rule R^{-1} to decode the encoded data.
6. To use the dataset, B translates the application schema specific data structure i_B into its internal database. This is done by defining a transformation from the concepts of the application schema to the concepts of the internal schema and by applying appropriate software to transform the data. In Figure 1 this mapping is denoted M_{IB} .

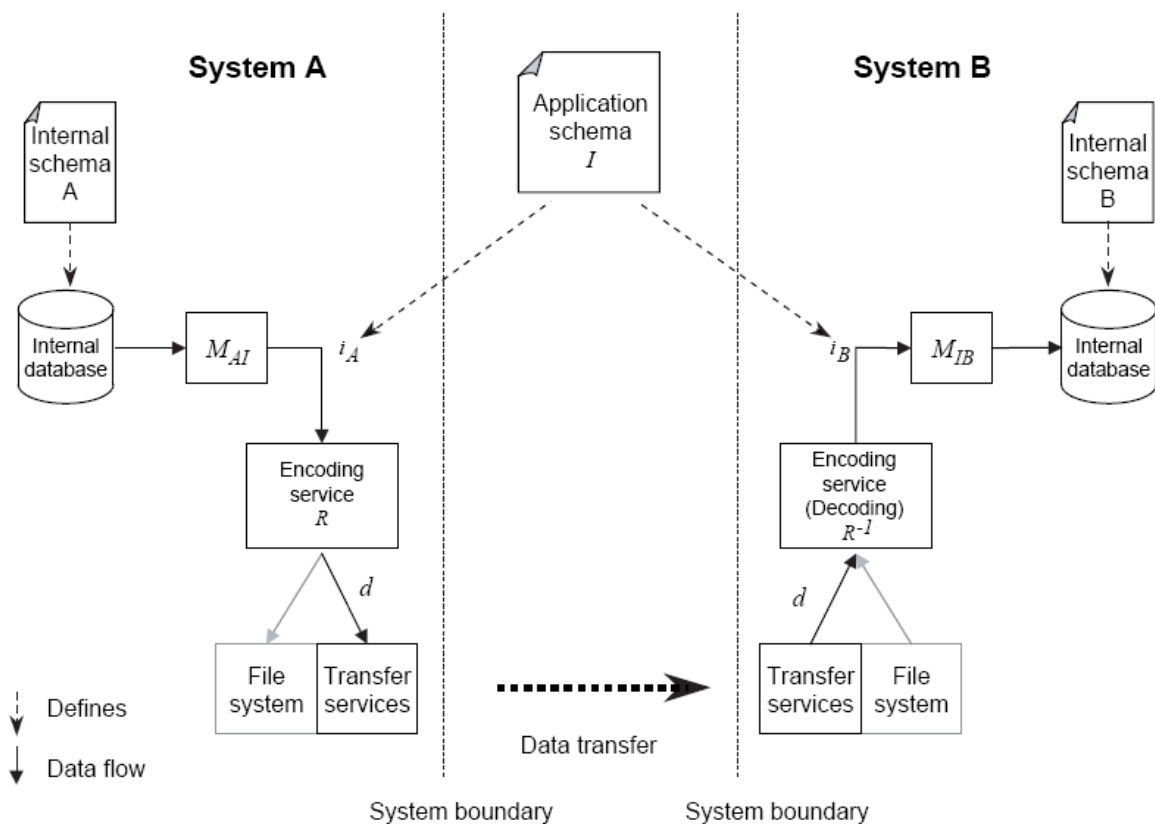


Figure 2 – Overview of data interchange between two systems [ISO 19118]

INSPIRE Data Specifications	Reference: D2.7_v3.3	
Guidelines for the encoding of spatial data	2014-04-08	Page 13

I.e., to ensure a successful interchange, A and B must agree on three aspects:

- An application schema I that defines the semantics of the content and the logical structures of the spatial data. Application schemas in INSPIRE conform to the requirements stated in the Generic Conceptual Model and are specified in INSPIRE data specifications.
- An encoding rule R defining the conversion rules for how to code spatial data corresponding to an application schema into a system-independent data structure. This document specifies guidelines related to such encoding rules (see steps 2 and 5).
- A transfer protocol for the transfer of the data between the two systems. Transfer protocols applicable in INSPIRE are specified in the Implementing Rule on Network Services and associated technical guidance documents.

6.3 Encoding rules

6.3.1 Concept

An encoding rule is an identifiable collection of conversion rules that defines the encoding for a particular data structure. The encoding rule specifies the data types to be converted, as well as the syntax, structure and coding schemes used in the resulting data structure. An encoding rule is applied to application schema specific data structures to produce system-independent data structures suitable for transport or storage. In order to define an encoding rule three important aspects are specified: the input data structure, the output data structure and the conversion rules between the elements of the input and the output data structures. Both the input and output data structures are written using a conceptual schema language and the concepts in the languages are used to define the encoding rule.

6.3.2 Input data structure

The input data structure is an application schema specific data structure. The data structure can be thought of as a set of instances, i.e. $i = \{ i_1, \dots, i_p \}$, where each instance i_k is an instance of a concept I_l defined in the application schema I . The application schema defines a set of concepts defined in the application schema $I = \{ I_1, \dots, I_m \}$.

6.3.3 Output data structure

The output data structure is defined by a data structure schema $D = \{ D_1, \dots, D_s \}$. D is the schema for the output structure and is not shown in Figure 2. The output data structure can be thought of as a set of instances, i.e. $d = \{ d_1, \dots, d_q \}$ where each instance d_k is an instance of a concept D_l . The schema D defines the syntax, structure and coding schemes of the output data structure.

The data structure schema is described with a schema language.

EXAMPLE An example of an output data structure schema is XML Schema.

6.3.4 Conversion rules

A conversion rule specifies how an instance in the input data structure shall be converted to zero, one, or more instances in the output data structure. The conversion rules are defined and based on the concepts of the conceptual schema language (i.e. UML and the ISO 19109 General Feature Model as referenced in the Generic Conceptual Model) on one hand and on the concepts of the output data structure schema D on the other hand. We need to specify a conversion rule R_i for each of the legal combinations of concepts in the conceptual schema language. The set of conversion rules are $R = \{ R_1, \dots, R_n \}$, where R_i is the i -th conversion rule.

NOTE The conversion rules are defined based on the two schema languages and not on any particular application schema. This is a generic approach that allows developers to write application-schema-independent encoding services, which can be used for different application schemas as long as the schemas are defined in the same conceptual schema language.

6.3.5 Encoding service

An encoding service is a software component that implements an encoding rule and provides an interface to encoding and/or decoding functionality. It is an integral part of data interchange.

Figure 3 presents the details of an encoding service and its relationships to important specification schemas (application schema *I* and data structure schema *D*). The encoding service reads the input data structure *i* and convert the instances to an output data structure *d* or vice versa.

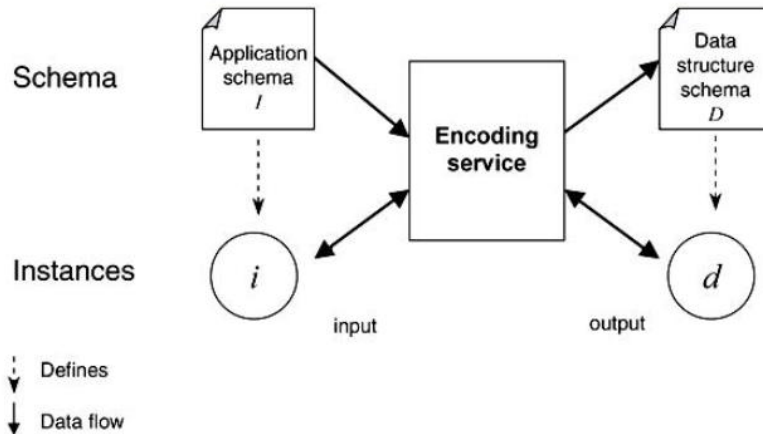


Figure 1 — Overview of the encoding process [ISO 19118]

NOTE It has to be understood that the encoding rule converts from a structure that is already application-schema-specific to a representation suitable for transfer. I.e. the internal schemas A and B will usually specify more information than it is represented in the application schema *I*. As a result, the internal databases in systems A and B will usually contain more information than it can be transferred based on the application schema.

6.3.6 Schema and instance level

Figure 3 also highlights that an encoding rule specifies conversion rules at both the schema and the instance level:

- At the schema level, the conversion rules define a mapping for each of the concepts defined in the application schema to corresponding concepts in the data structure schema.
- At the instance level the conversion rules define a mapping for each of the instances in the input data structure to corresponding instances in the output data structure. The instance conversion rules may be deduced from the schema conversion rules.

7 Encoding rules in INSPIRE

7.1 General requirements

This document defines requirements and recommendations on encoding rules that are the basis for the interoperability of spatial data.

Requirement 1 Every encoding rule in INSPIRE shall conform to ISO 19118. In particular, it shall specify schema conversion rules for all elements of the conceptual schema language that are used in the INSPIRE application schemas to which the rule is applied.

NOTE 1 This requirement is reflected in Article 7 of the implementing rules for the interoperability of spatial data sets and services (see below). Clear and unambiguous mappings from the concepts to the implementation level are considered a minimum requirement, otherwise the encoded data would no longer reflect the agreed application schema.

IR Requirement
Article 7
Encoding

1. Every encoding rule in INSPIRE shall conform to ISO 19118. In particular, it shall specify schema conversion rules for all spatial object types and all attributes and association roles and the output data structure used.
2. Every encoding rule used to encode spatial data shall be made available.

While no specific encoding rules and output data structure schemas are mandated as part of the implementing rules, interoperability between systems will require support for common encoding in all systems interchanging data. Thus, one or more recommended encodings will be specified for each INSPIRE application schema in guidance documents.

Requirement 2 Every data specification shall specify a mandatory encoding rule that has to be supported for the spatial data of that theme.

NOTE 2 The intention of this requirement is to ensure that data for the theme is available in a common encoding across Europe.

NOTE 3 Different encoding rules may apply to different "download use cases", see 5.4, although this should be avoided, if possible.

7.2 Default encoding rule

GML (ISO 19136, OGC 10-129r1) and ISO/TS 19139 are promoted as the default encoding in INSPIRE. The main reasons for this are:

- GML and ISO/TS 19139 cover encoding rules for large parts of the INSPIRE application schemas. This is not the case for any other commonly used encoding.
- GML specifies a XML based encoding rule for ISO 19109 conformant application schemas specifying spatial object types that can be represented using a restricted profile of UML that allows for a conversion to XML Schema⁵. In addition, GML provides a standardised encoding for many commonly used types from core standards of the ISO 19100 series (in particular ISO 19107, ISO 19108, ISO 19111, and ISO 19123) that form the foundation of the Generic Conceptual Model (D2.5).

⁵ XML Schema is chosen to encode XML-based encoding schemas, because of its usage in the geo-community. This is also reflected in its usage in OGC (e.g. OGC Web Services, Sensor Web Enablement standards, SLD, GML) and ISO/TC 211 (e.g. ISO 19110, ISO 19118, ISO 19136, ISO/TS 19139). XML Schema is much more widely used in current SDIs and SDI-related international standards than any other language to describe schemas for XML-based encodings like RelaxNG.

- ISO/TS 19139 specifies a XML based encoding rule for conceptual schemas specifying types that describe geographic resources, e.g. metadata according to ISO 19115 and ISO 19115-2 as well as feature catalogues according to ISO 19110.
- The reference material provided by SDICs and LMOs shows that GML is increasingly used in Member States and international communities to represent and transfer geographic information.
- GML and ISO/TS 19139 are well integrated with the current candidate standards of the network services.
- The use of these standards is in line with the recommendations of CEN/TR 15449 on encoding which promotes GML as the encoding method when transferring spatial objects and ISO/TS 19139 as the encoding method when transferring information related to spatial data such as metadata, feature catalogues and data dictionaries.
- A default encoding rule allows for a coherent encoding approach in line with the overall interoperability requirements of the Directive.

NOTE 1 There are open issues with this default encoding in the context of file-based data as it is used in some Annex II and Annex III themes. Existing work on this topic, a description of the issues and proposals for addressing them are documented in Annex D.

NOTE 2 The scope of this document is restricted to the encoding of spatial data. For the encoding of register items, it is expected that standardised encodings will be adopted where they exist (e.g. in the case of ISO 19110).

Recommendation 1 Every data specification should use the default encoding rule specified in Annex B as the mandatory encoding rule and document all additional type mappings.

The default encoding is applicable to all use cases described in 5.4.

7.3 Additional encoding rules

Recommendation 2 If the default encoding rule is not a mandatory encoding rule in a data specification, the reasons for this should be explained and the default encoding rule should be supported as an additional encoding rule.

Reasons for the use of alternative encoding rules are:

- a specific encoding for certain data has to be used to meet performance requirements
- existing file-based data (binary or text) has to be integrated as-is
- the application schema for a spatial data theme cannot be provided in accordance with the Generic Conceptual Model
- the application of the default encoding rule to an application schema is impossible or creates an impractical GML application schema

While a default encoding rule is provided, the diversity of themes and practice in the communities is recognised by allowing the use of additional encoding rules.

Recommendation 3 Encoding rules should be based on international, preferably open, standards.

While flexibility to support additional encoding rules is important, harmonisation and reduction of the spread of encoding rules is important, too. The list of recognised encoding rules and output data structure schemas will be maintained in a register as part of the data specification process.

Recommendation 4 Additional encoding rules should only be added, if the new encoding rule has unique characteristics required by the data that are not fulfilled by an encoding rule that has already been endorsed.

EXAMPLE An encoding rule to support geographic visualisation in a number of commonly-used clients could be KML-based. Unlike GML, KML is an XML language focused on geographic visualisation, including annotation of maps and images. Geographic visualization includes not only the presentation of graphical data on the globe, but also the control of the user's navigation in the sense of where to go and where to look.

7.4 Encoding of spatial object collections

Spatial data is exchanged as a collection of spatial objects.

Recommendation 5 For the download of a pre-defined (part of a) spatial data set via the operations specified in part A of the download service implementing rule and for the download of spatial objects via the operations specified in part B of the download service implementing rule, the same object collection container should be used for the same type of representation.

EXAMPLE For GML data, the WFS 2.0 FeatureCollection element is used.

7.5 Encoding of spatial data in a view service

Recommendation 6 If the GetFeatureInfo operation is offered by a view service, it should use the same encoding as the download service.

7.6 Encoding of coverages

Requirement 3 Every data specification that uses coverages shall specify how range values are encoded and how the information from the conceptual model is represented in the encoding so that a data provider can encode their coverage functions in a way that a receiving system can decode in an unambiguous way.

In general, at least the range of a coverage will not be encoded in XML, but some other binary or text-based format.

Open issue 1: Examples for the encoding of rectified grid coverages, referenceable grid coverages and time series to be provided based on actual content of the clauses 9 of the specifications supporting coverage encodings in a future version.

Open issues related to coverage data and other file-based data as well as proposals for addressing them are documented in Annex D.

8 Guidelines for the encoding of updates

The download of updates of data since a user-specified date and time is one of the supported use cases.

In this version of the encoding guidelines, the selection of the spatial data for the update is supported as long as the corresponding application schema supports the relevant temporal information.

For example, if the application schema supports life-cycle information for the spatial objects documenting the time when new spatial objects were inserted, or existing spatial objects were updated or retired. In this case, the life-cycle information can be used in queries to select only those spatial objects that were affected by changes since a user-specified point in time in the past. I.e. such queries can be used to download updates of a spatial data set. Other examples are modelling spatial objects as time series, etc.

INSPIRE Data Specifications		Reference: D2.7_v3.3
Guidelines for the encoding of spatial data	2014-04-08	Page 18

Some reference material uses a specific encoding for updates of data, e.g. the encoding of the individual update actions like

- insert of a new spatial object,
- update to a property of a spatial object,
- replacement of a spatial object by a new version,
- supersession of a spatial object by a new version,
- retirement of a spatial object, or
- deletion of a spatial object.

However, since no user requirements for such an encoding had been identified, such an encoding is not supported by this version of this document.

In addition, data specifications may specify additional technical arrangements for the encoding of updates.

9 Rules for exchange metadata

Exchange metadata is metadata about the encoded data that provides the necessary metadata about the transferred data to the receiver of the data. This metadata is provided by the download service via the Describe Spatial Data Set and Describe Spatial Object Type operations.

NOTE In a planned update to the Metadata Technical Guidance it will be clarified that the data set metadata provided by a discovery service should also include the interoperability metadata elements specified in the implementing rule regards interoperability of spatial data set and services.

INSPIRE Data Specifications		Reference: D2.7_v3.3
Guidelines for the encoding of spatial data	2014-04-08	Page 19

Annex A (normative)

Abstract Test Suite

A.1 Existence of a mandatory encoding rule

- a) Test Purpose: Verify that a mandatory encoding exists.
- b) Test Method: Inspect the data specification to verify that at least one mandatory encoding rule is specified for each application schema.
- c) Reference: Requirement 2
- d) Test Type: Basic Test

A.2 Completeness of each mandatory encoding rule

- a) Test Purpose: Verify that each mandatory encoding rule is complete.
- b) Test Method: Inspect each encoding rule to verify that for every concept in the application schemas a conversion rule exists that maps it to the output data structure schema.
- c) Reference: Requirements 1, 2, and 3
- d) Test Type: Basic Test

A.3 Conformance of each mandatory encoding rule

- a) Test Purpose: Verify that each mandatory encoding conforms to ISO 19118.
- b) Test Method: Inspect each encoding rule to verify that it conforms to ISO 19118.
- c) Reference: Requirement 1, ISO 19118 B.1-B.3
- d) Test Type: Basic Test

A.4 Application of the default encoding rule

- a) Test Purpose: If the default encoding rule has been applied, verify that the UML model and the XML Schema documents meet all requirements.
- b) Test Method: Inspect the UML model and the GML application schema(s) and .
- c) Reference: Requirements 4-12
- d) Test Type: Capability Test

Annex B (normative)

Default encoding rule

B.1 General remark

The requirements stated in this annex are only applicable for INSPIRE application schemas that reference the default encoding rule as a mandatory encoding rule.

B.2 Schema conversion

B.2.1 General rules

Requirement 4 A GML application shall be specified for the application schema.

NOTE The application schemas specified in the INSPIRE Consolidated UML Model – either in the Generic Conceptual Model or as part of a data specification for a spatial data theme – are managed independently. As a result there must be separate GML application schemas using different XML target namespaces.

Requirement 5 The encoding rule specified in ISO 19136 Annex E with the extensions in GML 3.3 shall be applied with the additional rules stated in this Annex. For types within the scope of the ISO/TS 19139 encoding rule, the encoding rule of ISO/TS 19139 shall be applied.

NOTE 1 In previous versions of these encoding guidelines, the default encoding was based on the encoding rule specified in ISO 19136 Annex E *without* the extensions in GML 3.3. The main differences of the extended encoding rule are the encoding of code list-valued properties and of association classes. According to the extended encoding rule, code list-valued properties are encoded using gml:ReferenceType instead of gml:CodeType (see section 12.2.1 Conversion rule changes). The encoding for association classes is now defined directly in the extended encoding rule (in the same way as it was defined in previous versions of this document, see section 12.3 Association class conversion rule). Therefore, no explicit rule for association classes is required in this document any more.

Recommendation 7 To identify the applicable encoding rule, a tagged value “xsdEncodingRule” should be provided for packages and classifiers. A value “iso19136_2007_INSPIRE_Extensions” indicates the GML-based encoding rule, “iso19139_2007” indicates the ISO/TS 19139 encoding rule. If no value is provided “iso19136_2007_INSPIRE_Extensions” is the default.

NOTE 2 The current XML schemas for the Annex I spatial data themes were generated using a previous version of the “iso19136_2007_INSPIRE_Extensions” encoding rule, which differs in some aspects (e.g. the encoding of code list-valued properties, see NOTE 1 above). It is expected that during the maintenance process the updated encoding rule will be applied also to the Annex I data models.

B.2.2 Conversion of the application schema to a GML-specific implementation schema

Since the UML profile supported by the Generic Conceptual Model is more general than the UML profile specified by ISO 19136 Annex E, it may be required to derive first a GML-specific

implementation schema in UML from the relevant INSPIRE application schema. This process is illustrated in Figure 3.

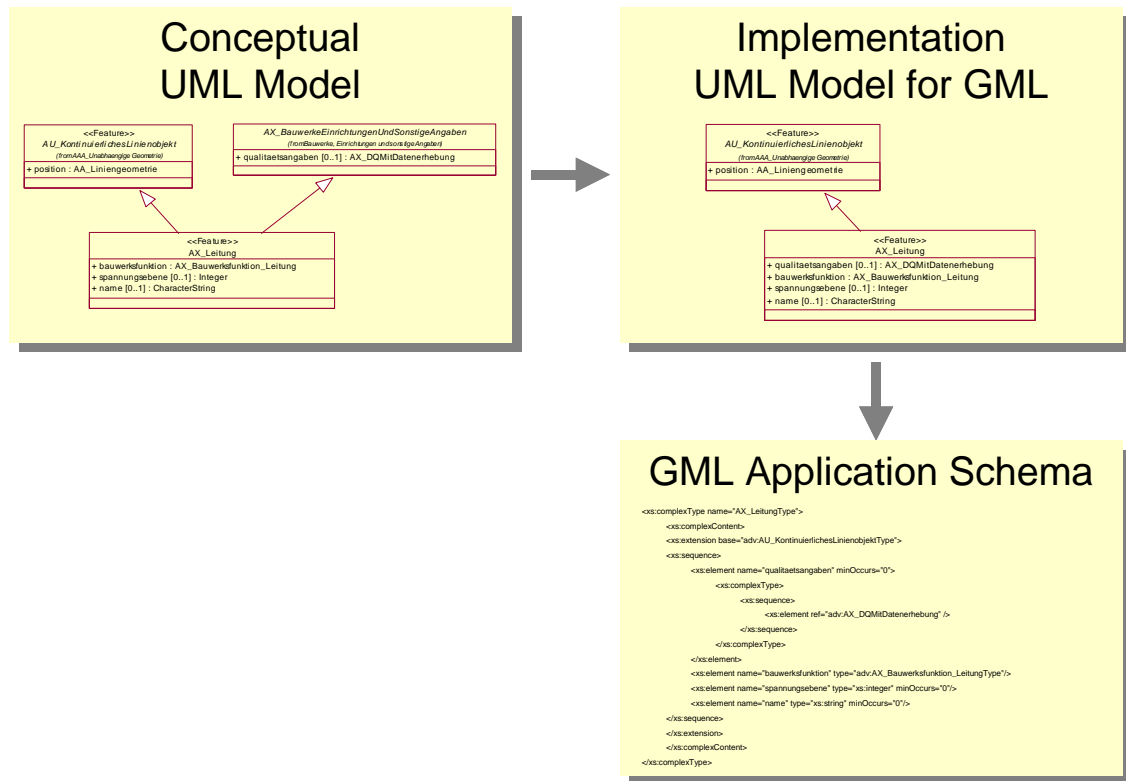


Figure 3 – Process of creating the GML application schema

Recommendation 8 If a transformation from the application schema on the conceptual level to the UML implementation profile from which the GML application schema is automatically derived is needed, it should follow a common set of rules across all themes.

The Generic Conceptual Model defines a UML profile which includes elements that are outside of the UML profile specified by ISO 19136 Annex E and ISO/TS 19139, for which those standards provide conversion rules to GML/XML.

No requirements for such conversions from the conceptual to an implementation model were identified for the Annex I, II or III spatial data themes. However, this may change in future revisions of these application schemas or in domain-specific extensions of the data models.

B.2.3 Extensions to the GML encoding rule

Properties with stereotype <<voidable>>

- Requirement 6** Attributes and association roles with the stereotype <<voidable>> shall be converted to XML Schema as if the stereotype were ignored - except that the content model of the property element shall receive two additional optional attributes:
- The global attribute “xsi:nil” (specified by XML Schema); in the schema this is expressed by an attribute “nillable” with the value “true”.
 - A local, unqualified attribute “nilReason” with the type “gml:nilReasonType”.

See GML 8.2.3.1 and 8.2.3.2 for more details.

Open issue 2: It has been commented in the stakeholder consultation of the Annex I data specifications, that this encoding of <<voidable>> causes substantial overhead in the GML encoding as most types have several voidable properties. In existing data, these will often not be available (this is why they were tagged as voidable), i.e. in the XML encoding several property elements per spatial object will often be represented with `xsi:nil="true"`. This increases the size of encoded spatial object by a substantial amount.

The following options were considered:

- In the encoding rule, change Requirement 6 as follows: “Attributes and association roles with the stereotype <<voidable>> shall be converted to XML Schema as if the stereotype were ignored and the minimum multiplicity of the property shall be ‘0’.” This approach would drop the distinction in this encoding between the two types of “no data” described in the Generic Conceptual Model 9.4.5: The characteristic is not present or not applicable in the real world or the characteristic is not present in the spatial object, but may be present or applicable in the real world.
- As an extension to the previous option, it could be considered to provide information about properties that are void throughout the spatial data set in the data set metadata. This also recognises that often the same properties will be void throughout the spatial data set.

In the comment resolution process it was decided to keep the existing rule, but to flag this issue as an open issue that should be addressed in collaboration with the Member States during the preparation of the implementation of the implementing rule on the interoperability of spatial data sets and services in the Member States.

The reasons for this decision are:

- The current requirement uses the XML encoding for such void values as foreseen in XML Schema. Before deviating from the standards, the practical need for a special rule should be established first objectively. The Drafting Team did not have sufficient information available to justify a change.
- As long as there is an agreement that the different cases of “no value” should be distinguishable also in the data, the first option described above is insufficient. If, however, it were considered more important to have a more compact encoding than being able to distinguish the cases, then this might be an option to simplify the encoding in such a way.
- Adding information about void properties in the dataset metadata is not a good idea either as it adds additional out-of-band information that most applications will not access or not even know where to find. Making even more relevant information undiscoverable to a standard client is not considered the right direction for making spatial data available on the internet. Furthermore, it is unclear how such an extension to the spatial data set metadata could be brought in line with the metadata regulation of INSPIRE.

Properties with stereotype <<lifeCycleInfo>>

Requirement 7 The stereotype <<lifeCycleInfo>> shall be ignored.

NOTE The stereotype is ignored as it has no impact on the XML Schema.

Properties with stereotype <<version>>

Requirement 8 The stereotype <<version>> shall be ignored.

NOTE The stereotype is ignored as it has no impact on the XML Schema, only in the encoding of the reference to the target object (version) in the instances. See C.4.

Mixin classes

Due to the fact that several implementation platforms including XML Schema supports only type derivation from a single base type (element substitutability in XML Schema is restricted to a single element, too), the use of multiple inheritance is currently not supported by GML 3.2.1 Annex E.

However, for conceptual modelling, the ability to define abstract types which capture a set of properties that are associated with a concept is often appropriate and convenient.

Requirement 9 Mixin classes shall have either the stereotype <<featureType>> or no stereotype and the tagged value "gmlMixin" with a value "true".

Mixin classes shall not be encoded as object elements. Instead the properties of a mixin class shall be encoded as if they were specified locally in each direct subtype that is not a mixin class.

In addition, a property type shall be created if the tagged value "noPropertyType" is set to "false". The content model of the property type shall use the standard pattern for property types with the difference that <choice> is used instead of <sequence> and the choice is a choice between all object elements of direct subtypes of the mixin class.

EXAMPLE In Figure 4 HydroObject is a mixin class.

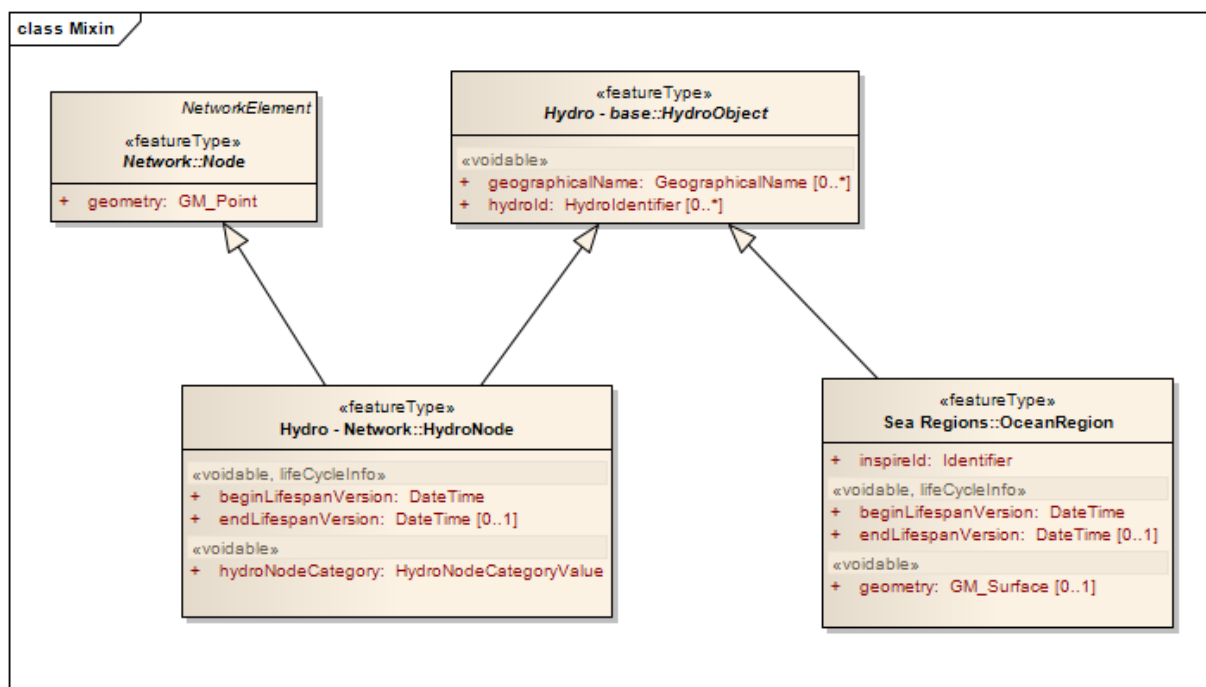


Figure 4 – Mixin example

The subtypes HydroNode and OceanRegion are encoded in XML Schema according to the rule as:

```

<element name="HydroNode" substitutionGroup="net:Node" type="hy-n:HydroNodeType"/>
<complexType name="HydroNodeType">
  <complexContent>
    <extension base="net:NodeType">
      <sequence>
        <element maxOccurs="unbounded" minOccurs="0" name="geographicalName" nillable="true">
          <complexType>
            <sequence>
              <element ref="gn:GeographicalName"/>
            </sequence>
            <attribute name="nilReason" type="gml:NilReasonType"/>
          </complexType>
        </element>
        <element maxOccurs="unbounded" minOccurs="0" name="hydroId" nillable="true">
          <complexType>
            <sequence>
              <element ref="hy:HydroIdentifier"/>
            </sequence>
            <attribute name="nilReason" type="gml:NilReasonType"/>
          </complexType>
        </element>
        <element maxOccurs="unbounded" minOccurs="0" name="relatedHydroObject" nillable="true"
type="gml:ReferenceType"/>
        <element name="beginLifespanVersion" nillable="true">
          <complexType>
            <simpleContent>
              <extension base="dateTime">
                <attribute name="nilReason" type="gml:NilReasonType"/>
              </extension>
            </simpleContent>
          </complexType>
        </element>
      </sequence>
    </extension>
  </complexContent>
</complexType>

```

```

<element minOccurs="0" name="endLifespanVersion" nillable="true">
  <complexType>
    <simpleContent>
      <extension base="dateTime">
        <attribute name="nilReason" type="gml:NilReasonType"/>
      </extension>
    </simpleContent>
  </complexType>
</element>
<element name="hydroNodeCategory" nillable="true">
  <complexType>
    <simpleContent>
      <extension base="gml:CodeType">
        <attribute name="nilReason" type="gml:NilReasonType"/>
      </extension>
    </simpleContent>
  </complexType>
</element>
</sequence>
</extension>
</complexContent>
</complexType>
<complexType name="HydroNodePropertyType">
  <sequence minOccurs="0">
    <element ref="hy-n:HydroNode"/>
  </sequence>
  <attributeGroup ref="gml:AssociationAttributeGroup"/>
  <attributeGroup ref="gml:OwnershipAttributeGroup"/>
</complexType>

<element name="OceanRegion" substitutionGroup="gml:AbstractFeature"
  type="sr:OceanRegionType"/>
<complexType name="OceanRegionType">
  <complexContent>
    <extension base="gml:AbstractFeatureType">
      <sequence>
        <element maxOccurs="unbounded" minOccurs="0" name="geographicalName" nillable="true">
          <complexType>
            <sequence>
              <element ref="gn:GeographicalName"/>
            </sequence>
            <attribute name="nilReason" type="gml:NilReasonType"/>
          </complexType>
        </element>
        <element maxOccurs="unbounded" minOccurs="0" name="hydroId" nillable="true">
          <complexType>
            <sequence>
              <element ref="hy:HydroIdentifier"/>
            </sequence>
            <attribute name="nilReason" type="gml:NilReasonType"/>
          </complexType>
        </element>
        <element maxOccurs="unbounded" minOccurs="0" name="relatedHydroObject" nillable="true"
          type="gml:ReferenceType">
        </element>
        <element name="beginLifespanVersion" nillable="true">
          <complexType>
            <simpleContent>
              <extension base="dateTime">

```

```

    <attribute name="nilReason" type="gml:NilReasonType"/>
  </extension>
</simpleContent>
</complexType>
</element>
<element minOccurs="0" name="endLifespanVersion" nillable="true">
  <complexType>
    <simpleContent>
      <extension base="dateTime">
        <attribute name="nilReason" type="gml:NilReasonType"/>
      </extension>
    </simpleContent>
  </complexType>
</element>
<element minOccurs="0" name="geometry" nillable="true" type="gml:SurfacePropertyType"/>
<element name="inspireId" type="base:IdentifierPropertyType"/>
<element maxOccurs="unbounded" minOccurs="0" name="foreshore" nillable="true"
type="gml:ReferenceType"/>
</sequence>
</extension>
</complexContent>
</complexType>
<complexType name="OceanRegionPropertyType">
  <sequence minOccurs="0">
    <element ref="sr:OceanRegion"/>
  </sequence>
  <attributeGroup ref="gml:AssociationAttributeGroup"/>
  <attributeGroup ref="gml:OwnershipAttributeGroup"/>
</complexType>

```

In addition, a property type is created for HydroObject:

```

<complexType name="HydroObjectPropertyType">
  <choice minOccurs="0">
    <element ref="hy-n:HydroNode"/>
    <element ref="sr:OceanRegion"/>
    ... elements of other subtypes
  </choice>
  <attributeGroup ref="gml:AssociationAttributeGroup"/>
  <attributeGroup ref="gml:OwnershipAttributeGroup"/>
</complexType>

```

B.2.4 Restrictions on options in the GML encoding rule

The intention of the following recommendations is to harmonise the encoding style across the different data specifications where the GML encoding rule leaves encoding options.

Recommendation 9 All navigable feature association roles should be assigned a tagged value "inlineOrByReference" with the value "byReference".

NOTE 1 The result of this particular recommendation is that features are not embedded in other features in XML documents but that they are all first level objects in a feature collection. An example where this recommendation would in general be ignored are complex spatial objects that own their parts.

Requirement 10 All INSPIRE code lists shall be assigned a tagged value "asDictionary" with the value "true".

NOTE 2 As a result, the code list values are managed only in registries outside of the application schema and all code-list-valued properties in feature instances have to reference the registry to allow applications to evaluate the code list value and its validity, its title in the official languages or its definition.

NOTE 3 If a code list relevant for an INSPIRE data specification is already maintained by an international organisation, then INSPIRE will simply adopt that code list and reference it. However, if the international organisation does not provide a representation of the code lists as a GML dictionary it may be required to maintain such a representation in an INSPIRE registry.

B.2.5 XML namespaces

Requirement 11 Except for cases where existing XML encodings are adopted by INSPIRE, the target namespace of the GML application schema shall be a URI of the form

`http://inspire.ec.europa.eu/schemas/<code>/<version>`

where <code> is a unique, persistent short code of the GML application schema in INSPIRE and <version> identifies the particular version. The <code> value shall not include a colon.

EXAMPLE Version 3.1 of the GML application schema for the INSPIRE application schema for the spatial data theme "Addresses" will use "http://inspire.ec.europa.eu/schemas/ad/3.1" as the target namespace.

NOTE This requirement ensures a common approach to the use of XML namespaces across the different data specifications.

B.3 Instance conversion

B.3.1 Character encoding

Requirement 12 XML documents shall be required to be encoded using UTF-8 as character encoding.

NOTE This requirement ensures that all linguistic texts can be encoded in any language – which in turn simplifies processing of data. The use of UTF-8 also aligns with common practice and is the default character encoding for XML documents.

B.3.2 Encoding of identifiers and references

In INSPIRE, resource identifiers and references to resources should be encoded as URIs as specified in Annex C.

Recommendation 10 For the encoding of resource identifiers and references to resources, the data specifications should recommend using URIs as specified in Annex C.

B.3.3 Root element of the exchange document

Recommendation 11 For the exchange of spatial objects in GML, an XML document with a <FeatureCollection> root element from ISO 19142:2010 (WFS 2.0) should be used.

B.4 Implementation aspects <informative>

In encoding services, conversion rules have to be implemented at both the schema and the instance level (see 6.3.6):

- At the schema level, the conversion rules derive a GML application schema from the INSPIRE application schema in UML. This is done once - the resulting GML application schema is specified as part of the INSPIRE data specification.
- At the instance level the implementation will usually be system-specific, usually integrated into download services. The required software components encoding data structured according to an application schema, e.g. in a database, in XML according to the corresponding GML application schemas and vice versa are available in the market.

INSPIRE Data Specifications	Reference: D2.7_v3.3	
Guidelines for the encoding of spatial data	2014-04-08	Page 29

Annex C (normative)

Resource identifiers

C.1 General remark

The recommendations stated in this annex are applicable not for the individual INSPIRE application schemas, but are recommendations with other targets, typically instance data.

See also D2.5, v3.4, Annex H which provides an overview of the use of URIs for identifiers in INSPIRE.

C.2 Use of URIs

Within INSPIRE specifications, metadata and spatial data require access to resources, such as schemas, documents, reference systems, spatial objects, definitions, code lists, spatial data services, etc. In order for the larger community of users of spatial data and developers of software components, a persistent mechanism to uniquely reference resource – independent of their physical location in the network.

Uniform Resource Identifiers (URIs) as defined in IETF RFC 3986 are intended to serve as these persistent, location-independent resource identifiers.

Recommendation 12 Identifiers of resources should be URIs in the “http” scheme.

Recommendation 13 While it is not strictly a requirement that the resource can be accessed via the HTTP protocol using its http URI, it is strongly recommended that this is the case.

The use of HTTP includes support for content negotiation to access a resource in different languages and/or different encodings, if supported.

Recommendation 14 Every Member State and the European Commission should develop, document and maintain a URI scheme for their resources.

This topic requires some additional comments:

- RFC 3986 specifies URIs and this includes locators, too. For example: "Instances of URIs from any given scheme may have the characteristics of names or locators or both, often depending on the persistence and care in the assignment of identifiers by the naming authority, rather than on any quality of the scheme."
- Data providers so far do not really seem to have developed careful approaches to the assignment of identifiers, but this should be encouraged more actively.
- In INSPIRE, the idea is that URI identifiers MUST be persistent names and SHOULD be locators. If they cannot serve as locators, linking to another spatial object is of limited use as the referenced object cannot be accessed. Note that supporting locators will require direct access to single spatial objects via a download service.
- Recommendation 14 is not binding the identifier to a location. The sensible approach is to define URIs for the spatial objects independent of the details of the backend and use standard http redirects.

INSPIRE Data Specifications	Reference: D2.7_v3.3	
Guidelines for the encoding of spatial data	2014-04-08	Page 30

An example: The URI of the ETRS89 geographic CRS as registered by EPSG is <http://www.opengis.net/def/crs/EPSG/0/4258>. If dereferenced, it redirects to <http://www.epsg-registry.org/indicio/query?request=GetRepositoryItem&id=urn:ogc:def:crs:EPSG::4258>. If OGP ever changes the syntax of their requests or the backend registry, the redirect will have to be adapted, but the OGC URI will stay as is and serves as a persistent identifier.

The same principles may be applied to references to spatial objects, too. For example:

Request

```
GET /id/flurstueck/DEBBAL00/00001o4A HTTP/1.1
Host: www.example.com
Accept: text/html;q=0.5, application/gml+xml;q=0.2, application/rdf+xml
```

Response

```
HTTP/1.1 303 See Other
Location:http://data.example.com/wfs?SERVICE=WFS&VERSION=2.0.0&REQUEST=GetFeature
&STOREDQUERY_ID=urn:ogc:def:query:OGC-WFS::GetFeatureById&ID=DEBBAL0000001o4A
```

This is standard practice in the web and this approach is recommended practice also for spatial objects in INSPIRE.

EXAMPLE An example for a URI scheme is given in Annex H (sections H.3.4 and H.4) of the INSPIRE Generic Conceptual Model [D2.5].

C.3 Encoding of an external object identifier

Recommendation 15 URIs of spatial objects should be persistent http URIs and include the namespace and the local identifier part of the INSPIRE identifier, if available.

EXAMPLE 1 <http://location.data.gov.uk/so/ad/Address/00BH/123456789012> could be used to encode the external object identifier of an INSPIRE Address spatial object with the namespace "00BH" and the local id "123456789012" (example adapted from [Designing URI Sets for Location, 2011]).

Recommendation 16 In a GML encoding, the external object identifier should be encoded in a `gml:identifier` property of the feature with the `codeSpace` attribute set to <http://inspire.ec.europa.eu/ids>.

NOTE At <http://inspire.ec.europa.eu/ids>, a web page is available that contains answers to frequently asked questions (FAQ) around the implementation of identifiers using URIs in INSPIRE. In the future, this page may be extended into a register of the URI schemes of the EU Member States and the European Commission.

EXAMPLE 2

```
<gml:identifier codeSpace="http://inspire.ec.europa.eu/ids">
  http://location.data.gov.uk/so/ad/Address/00BH/123456789012
</gml:identifier>
```

The information from the external object identifier may also be used for an XML ID attribute (`gml:id` in the GML encoding).

While the XML 1.0 standard allows colons in XML ID, this is prohibited in the Namespaces in XML 1.0 standard. Since XML namespaces are used in INSPIRE XML documents, a different separator between the identifier parts has to be used.

In addition, since XML ID values only have to be unique within a document, or in the case of an OGC Web Feature Service within the opaque data store of the service, the identifier namespace may be omitted if only spatial objects from a single identifier namespaces are provided by a download service.

EXAMPLE 3 In this example, the identifier namespace from the identifier [namespace="00BH", local id="123456789012", version="2008-09-12T12:34:56Z"] is dropped and since the naming system uses a fixed length for the local identifier the version is appended without separator:

```
<ad:Address gml:id="12345678901220080912T123456Z">
...
</ad:Address>
```

XML ID does not allow digits, points and dashes as start characters. In naming systems where this may occur this may be circumvented, for example, by adding a leading underscore character.

NOTE 2 This will not occur in cases where the identifier namespace is included as it will always start with a letter or an underscore.

EXAMPLE 4 With namespace (if the Web Feature Service hosts spatial objects from multiple namespaces) and a separator “_” the spatial object from example 3 would be encoded as

```
<ad:Address gml:id="00BH__123456789012__20080912T123456Z">
...
</ad:Address>
```

C.4 Encoding of a reference to a spatial object

Recommendation 17 To reference a spatial object or a specific version of a spatial object its persistent URI based on its INSPIRE identifier (see Recommendation 15) should be used. For spatial objects without an INSPIRE identifier a URI based on the gml:id of the GML representation of the spatial object should be used.

EXAMPLE A reference to a cadastral parcel object with the identifier used in example 3 in C.3 could be encoded as (using a hypothetical URI scheme)

```
<parcel xlink:href="http://location.nrw.de/so/DEAAA/NW123412345678"/>
```

This assumes that the reference is to the spatial object and not a specific version of the spatial object. In case of a reference to the specific version, the reference would be encoded as

```
<parcel xlink:href="http://location.nrw.de/so/DEAAA/NW123412345678/20080912T123456Z"/>
```

C.5 Encoding of a reference to a registered item

C.5.1 General rules

Recommendation 18 URIs should be used to encode the identifiers of items in registers and to reference such items, and a URI scheme for each register should be provided by the register manager. For external registers that do not provide stable URIs, INSPIRE-URIs may be provided and used.

EXAMPLE OGC provides a URI scheme to reference coordinate reference systems in the EPSG register, e.g., <http://www.opengis.net/def/crs/EPSSG/0/4258> would be a reference to the geographic coordinate reference system ETRS89 in the EPSG coordinate reference system register.

This applies to all items that will be managed in registers: terms, feature types, coordinate reference systems, coordinate operations, units of measurements, identifier namespaces, application schemas, etc. The list of item classes will be compiled during the INSPIRE development and implementation process.

C.5.2 Code list values

Recommendation 19 URIs should be used to encode code lists and their values in INSPIRE code list registers and to reference such items.

The URIs should use the following structure:

- `http://inspire.ec.europa.eu/codelist/<CodeListId>` for code lists
- `http://inspire.ec.europa.eu/codelist/<CodeListId>/<valueId>` for code list values

The `<CodeListId>` should be in UpperCamelCase, and the `<valueId>` in lowerCamelCase notation. Both identifiers should be mnemonic.

Other URIs may be used, too, for items managed in external registers. For registers with stable URIs as identifiers, these URIs may be used instead. For external registers that do not provide stable URIs, the “inspire”-URIs will be used.

NOTE The use of HTTP includes support for content negotiation to access a resource in different languages and/or different encodings, if supported. The approach also enables universal access and understanding by a wider community. The use of other URIs is intended to support the usage of URIs that are already commonly used and supported by software components or specified in other standards.

Recommendation 20 When specifying a code list value in instance data, a human-readable label to be used in user interfaces should be provided in addition to the unique identifier of the value.

EXAMPLE In GML, the value identifier and label for the country code (code list id: CountryCode) for Germany (value id: DE) would be encoded using the `xlink:href` and `xlink:title` properties:

```
<SomeFeature gml:id="abc123">
  <country xlink:href="http://inspire.ec.europa.eu/codelist/CountryCode/de"
    xlink:title="Deutschland"/>
  (...)
</SomeFeature>
```

Open issue 3: There is a distinction between the identifier of a concept and the identifier of an item in a register. Following the rules of 19135, if the definition of this registered item is changed by the control body then the old item is superseded and a new item - with a new identifier - is created. In the terminology of ISO 19135, a registered code list value item is different from the underlying 'concept', i.e. multiple code list value items with supersession relationships may represent the same concept, which in turn may also be identified by a URI. This aspect is currently lacking in ISO 19135. It is recognised in 19135 in the last paragraph of 7.5, but ISO 19135 currently does not support an identifier for a concept. However, this topic is discussed in the current revision of ISO 19135.

C.6 Encoding of a thematic identifier

During the development of the initial data specifications for the Annex II/III themes a type for thematic identifiers has been introduced and – going forward – will be used consistently for such identifiers.

Requirement 13 Properties with a value type ThematicIdentifier shall have the value “notEncoded” in the tagged value “xsdEncodingRule”. In the GML representation they shall be mapped to `gml:name`.

Open issue 4: The identifier schemes of well-known thematic identifiers should be managed in an INSPIRE register. If organisations managing thematic identifier schemes provide stable http URIs at which the scheme is explained, such URIs may also be used to identify the scheme.

INSPIRE Data Specifications		Reference: D2.7_v3.3
Guidelines for the encoding of spatial data	2014-04-08	Page 33

EXAMPLE The ICAO airport code of London Heathrow (note that there does not seem to be stable description of the codes on the ICAO website):

```
<gml:name codeSpace="http://inspire.ec.europa.eu/ids/icao-airport-code">EGLL</gml:name>
```

Annex D (informative)

Encoding of file-based data

Open issue 5: The data specifications for Elevation and Orthoimagery contain a jointly developed annex with encoding rules for grid coverages based on GML and TIFF/jpeg2000. Annex B of D2.9 (Guidelines for the use of Observations & Measurements and Sensor Web Enablement-related standards in INSPIRE Annex II and III data specification development) contains a discussion paper on “Harmonising the delivery of gridded data as OM_Observation result in the INSPIRE Data Specifications based on the Observations & Measurements data model”, mainly focussing on the grid coverages defined in the “Atmospheric conditions and Meteorological geographical features” and “Oceanographic geographical features” data specifications. Based on these documents, the current annex should be updated to provide harmonized requirements and recommendations for the encoding of coverage/file-based data.

D.1 Overview

For many applications and INSPIRE themes, data typically are persisted in relational databases. Numerous implementations have demonstrated the feasibility of transforming such data to standardised encodings corresponding to common GML application schemas. However, this is not universally the case. Especially for coverage-based data⁶, and in some environmental themes (e.g. ‘Orthoimagery’, ‘Oceanographic geographical features’, ‘Meteorological geographical features’), file-based data storage is more common.

For file-based data, there is no best practice solution for integration within a spatial data infrastructure based on the standards referenced from INSPIRE guidance documents. Further research is needed, but this annex outlines an approach that is proposed as the starting point for such work.

D.2 Requirements

D.2.1 Need to retain existing efficient file formats

In many cases, the reason for file-based storage is data volume – space-borne remote-sensing imagery, or computer simulation (e.g. weather forecast) datasets may be many terabytes in size. It is impractical to transform such data to an XML-based encoding⁷. For operational reasons, it is necessary to retain existing efficient file-based encodings for such data.

D.2.2 Need for interoperable representation

However, in order to establish cross-theme and cross-dataset interoperability for sharing these data, as required in the INSPIRE Directive, it is necessary also to provide a representation conforming to the model-driven approach outlined in the “Generic Conceptual Model” (D2.5).

⁶ The rules for the use of coverages in INSPIRE application schemas are discussed in the Generic Conceptual Model, in particular in sub-clause 10.4 “Rules for use of coverage functions” and the last paragraph in sub-clause 9.2.3.

⁷ Work underway by W3C on an *Efficient XML Interchange Format* (<http://www.w3.org/TR/2008/WD-exi-20080919/>) may change this in the future.

INSPIRE Data Specifications	Reference: D2.7_v3.3		
Guidelines for the encoding of spatial data	2014-04-08	Page 35	

D.2.3 Conceptual modelling unconstrained by file formats

For relational data, it is already best practice to develop conceptual models independent of existing storage structures (application schema design is independent of database schema). Indeed, this approach is encapsulated by the INSPIRE “Methodology for the development of data specifications” (D2.6). This should also be true for file-based data. For instance, an application schema should not merely reflect the physical structure of file formats – spatial object types should rather reflect more conceptual real-world objects.

D.2.4 Ability to model file extracts

A corollary of this requirement is that a conceptual model and interoperable representation should be able to describe *extracts* of files where necessary.

EXAMPLE The HDF-EOS file format widely used in the earth sciences supports multiple spatial object types (point, grid, and swath) – a single file may contain any of these objects, in any number. However, an application schema may need to define only swath-type spatial objects (with the interoperable representation thereby constrained to refer only to swath objects within a file).

D.2.5 Ability to integrate logical structures across files

Similarly, individual files may contain only a partial view of a complete dataset. It is necessary for an application schema and interoperable representation to be able to describe logical structures that are integrated *across* multiple individual files.

EXAMPLE 1 Separate files may contain northern and southern hemispheres of a coverage dataset with global extent.

EXAMPLE 2 Individual calendar months of a two-year long tidal time series dataset may be stored in separate files.

EXAMPLE 3 The WMO ‘GRIB’ format provides independent two-dimensional horizontal slices of atmospheric parameters that, in the real world, may be three-dimensional (or four-dimensional, if the temporal dimension is also taken into account).

D.3 Proposed interoperability model – joint representation

The ISO/DTS 19129 (“Geographic information - Imagery, gridded and coverage data framework”) distinguishes between the logical *content* of a coverage or imagery dataset, the *encoding* defined by an exchange file format, and the need for mappings between them:

Most of the existing interchange standards relating to imagery, gridded and coverage data describe information in terms of its representation in an interchange format. The format defines data fields and describes the contents and meaning of these data fields. This implicitly defines the information content that can be carried by this interchange format. Some of the existing standards even separate their "information" from the encoding within the description of the standard, but in the end it is the encoding that defines these standards. The common content model defined in this Technical Specification allows for a mapping to the structures defined in the encoding standards. (ISO/TC 211 N 2547, DTS 19129, “Geographic information - Imagery, gridded and coverage data framework”)

Moreover, it recognises the role that GML can play in mediating between the logical content and the physical exchange format, Figure 2.

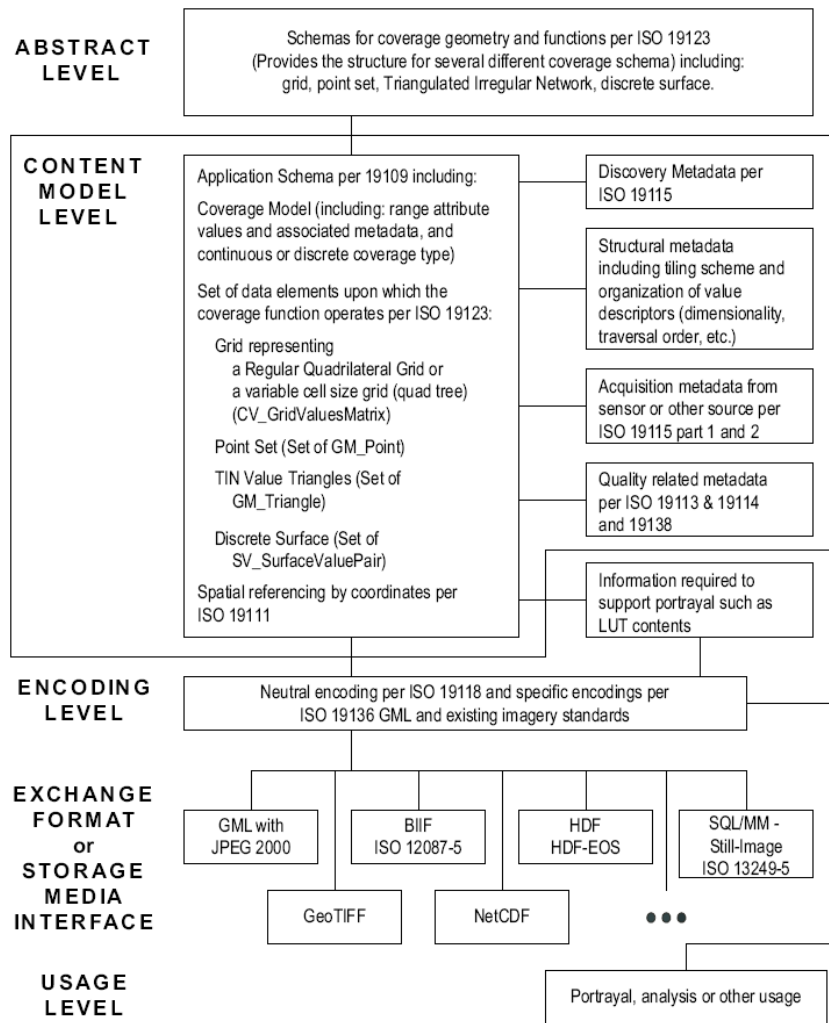


Figure 2: GML may provide a neutral *encoding* to mediate between logical *content* and physical *exchange* formats for file-based datasets [ISO/DTS 19129]

The interoperability model for INSPIRE file-based datasets requires an application schema for describing the logical structure and semantic content of a dataset, while retaining efficient data files themselves during exchange.

The INSPIRE default encoding for file-based datasets therefore consists of three components:

1. a GML application schema in accordance with Annex B of these Guidelines (providing a conceptual dataset ‘skeleton’)
2. one or more ‘legacy’ data files (containing the ‘flesh’ of the dataset)
3. a mapping from the GML representation to those files or file extracts providing the logical content

This approach effectively provides a ‘GML wrapper’ to data files.

EXAMPLE This joint representation is analogous to that used in the GMLJP2 specification.

D.4 Implementation

The general interoperability model described above does not imply a particular implementation of the mapping between a GML application schema and data files. However, GML itself provides a ‘by-

INSPIRE Data Specifications	Reference: D2.7_v3.3	
Guidelines for the encoding of spatial data	2014-04-08	Page 37

reference' pattern for object properties that may be used for a level of indirection between inline encoding of a property value and an external resource:

the value of the property is available elsewhere, and is identified by the value of an xlink:href attribute on the property element (ISO 19136, §7.2.3.1)

Using this mechanism, the full richness of the Xlink specification may be exploited for referencing file-based content from within GML. This is described in GML §8.1, though the normative Xlink specification is available from W3C. Two additional xlink attributes provide important context:

xlink:role *description of the nature of the target resource, given as a URI*
xlink:arcrole *description of the role or purpose of the target resource in relation to the present resource, given as a URI*
(ISO 19136, §8.1)

Thus, an implementation may use xlink attributes as follows:

- *href*: for referencing one or more files, file extracts, or aggregated file structures providing the logical content for a GML property element. (E.g. a file name or URI)
- *role*: for specifying the nature of the referenced file resource(s). (E.g. specifying the file format)
- *arcrole*: for asserting that the file resource(s) provide logical content for the referring GML element

D.5 Issues

While the above approach provides a general framework for interoperability of file-based data within INSPIRE, various elements of the implementation require further work.

D.5.1 Complex transformation semantics

In general, there may be a many-to-many relationship between spatial objects and file instances (D.2.4, D.2.5). The simplest case is where an entire file provides directly the logical content for a single GML property. An example might be an image file providing the range attributes for a gridded coverage. In this case, the xlink:href may refer directly to a single file. However, there is likely a need for richer mediation semantics in order to refer to file extracts, or to logical structures aggregated across multiple files. Third-party schemas may play a role as 'virtual' file formats⁸.

D.5.2 GML properties with simple content

Not all GML properties support the 'by-reference' pattern. In particular, GML properties of 'simple XML type' generally use inline encoding. It needs to be determined whether such properties also require an indirection mechanism for file-based content as described above, and how it could be implemented.

D.5.3 Pilot project

The proposed mechanism has been explored only briefly (e.g. OGC 07-083), and there is need for a pilot project to investigate the adequacy and feasibility of this approach. Such a pilot should involve interested stakeholders from one or more relevant INSPIRE themes, and aim to develop best-practice guidelines, perhaps in collaboration also with OGC.

⁸ Examples include CDML (http://esg.llnl.gov/cdat/cdms_html/cdms-6.htm), NcML (<http://www.unidata.ucar.edu/software/netcdf/ncml/>), and the CSML (<http://ndg.nerc.ac.uk/csml>, now <http://csml.badc.rl.ac.uk>) StorageDescriptor.

Bibliography

This clause lists documents that were used in the drafting of this document, but which are not normative.

CEN/TR 15449:2006, Geographic information — Standards, specifications, technical reports and guidelines, required to implement Spatial Data Infrastructure

EN ISO 19101:2005, Geographic information — Reference model

ISO/TS 19103:2005, Geographic Information — Conceptual schema language

NOTE A revision of the standard is in progress and currently has a target date of July 2013 for reaching “Draft International Standard” status. To the extent possible, alignment of this document with the future version has been taken into consideration.

EN ISO 19109:2006, Geographic Information — Rules for application schemas

EN ISO 19115:2005, Geographic information — Metadata

ISO 19115:2003/Cor 1:2006, Geographic information — Metadata — Technical Corrigendum 1

ISO/TS 19129:2009, Geographic information — Imagery, gridded and coverage data framework

EN ISO 19135:2007, Geographic information — Procedures for item registration

UML 2.1.2, Unified Modelling Language (UML) Superstructure and Infrastructure, Version 2.1.2

UK Location Council & Public Sector Information Domain of the CTO Council’s cross Government Enterprise Architecture, Designing URI Sets for Location, Version 1.0, May 2011