

Working Group on Toponymic Data Files and Gazetteers (WG-TDFG)

New Zealand's enhanced online Gazetteer

Wendy Shaw | Secretary for the New Zealand
Geographic Board Ngā Pou Taunaha o Aotearoa

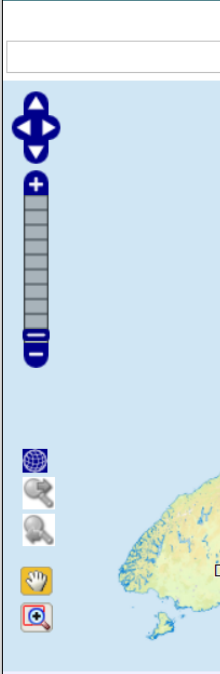

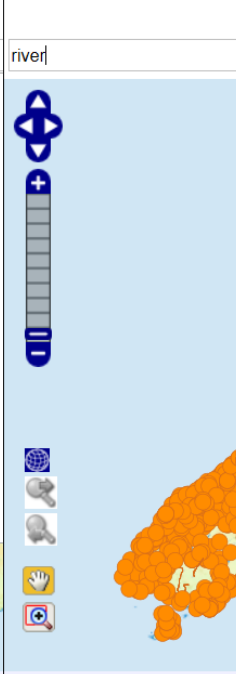
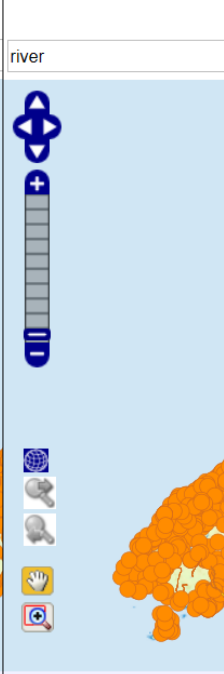
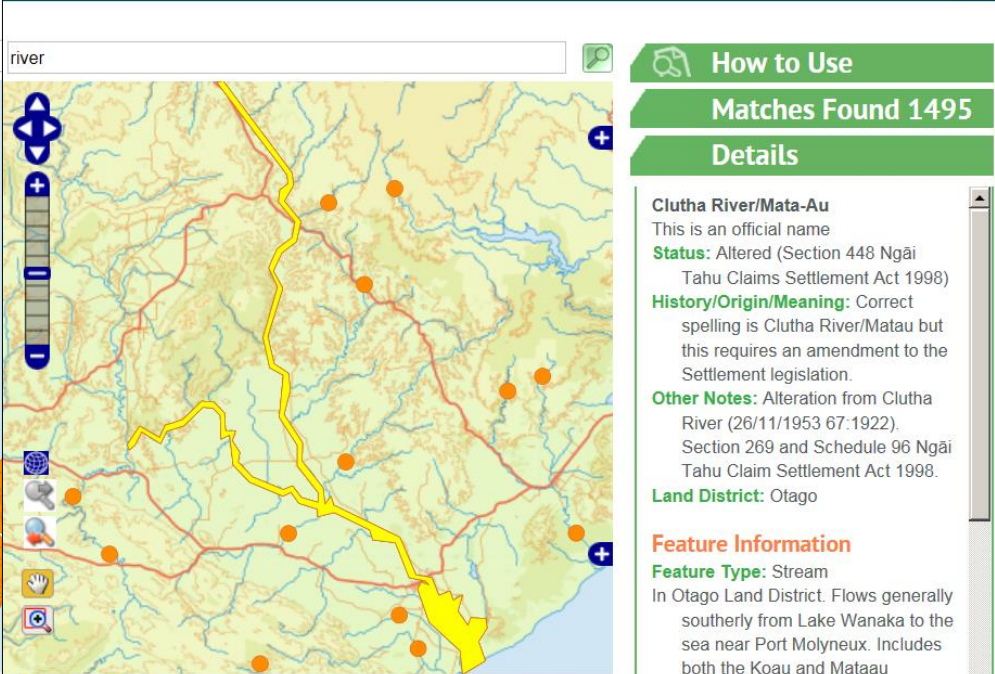
Friday 11 August 2017



Presentation Structure

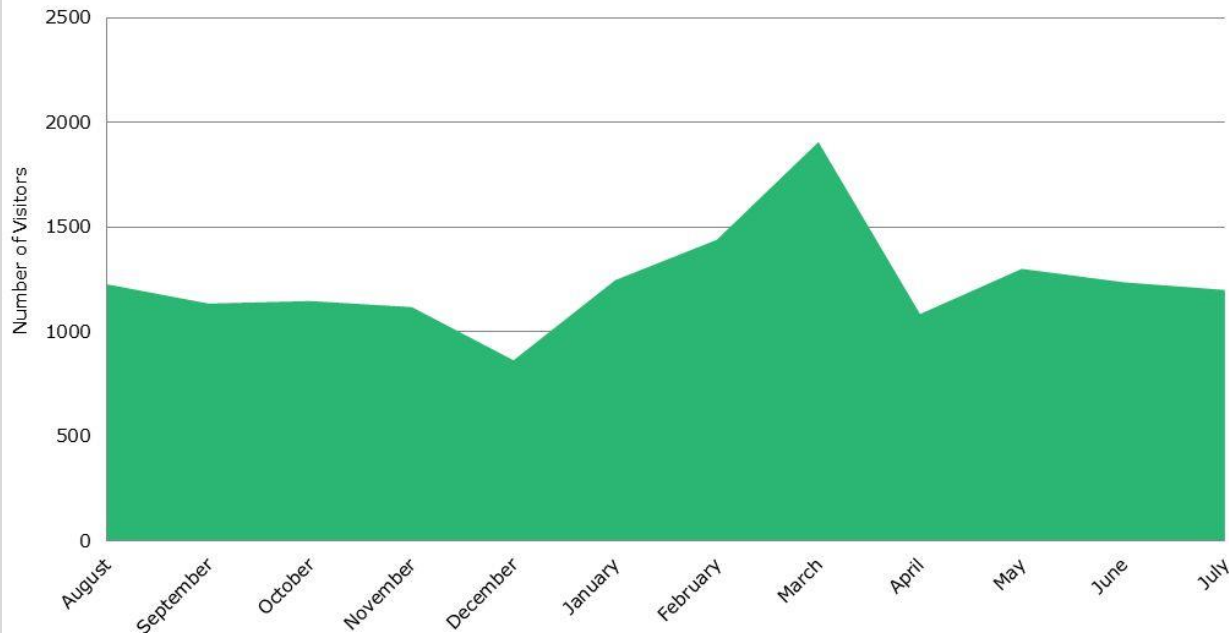


Current online Gazetteer

New Zealand Names	New Zealand Names	New Zealand Names	New Zealand Names	New Zealand Gazetteer: Search for Place Names
<input type="text"/> 	<input type="text" value="riv "/> <ul style="list-style-type: none"> rivard river riverbank riverbed riverhead riverlands riverlea rivermouth rivers riversdale riverside riverstone riverton riverview rivulet 	<input type="text" value="river "/> 	<input type="text" value="river"/> 	<input type="text" value="river"/>  <div style="border: 1px solid green; padding: 5px; margin-top: 10px;"> <p>How to Use</p> <p>Matches Found 1495</p> <p>Details</p> <p>Clutha River/Mata-Au This is an official name Status: Altered (Section 448 Ngā Tahu Claims Settlement Act 1998) History/Origin/Meaning: Correct spelling is Clutha River/Matau but this requires an amendment to the Settlement legislation. Other Notes: Alteration from Clutha River (26/11/1953 67:1922). Section 269 and Schedule 96 Ngā Tahu Claim Settlement Act 1998. Land District: Otago</p> <p>Feature Information Feature Type: Stream In Otago Land District. Flows generally southerly from Lake Wanaka to the sea near Port Molyneux. Includes both the Koau and Mataau branches at its mouth</p> </div>
<p>While the text search covers near New Zealand.</p>	<p>While the text search covers near New Zealand.</p>	<p>While the text search covers near New Zealand.</p>	<p>While the text search covers near New Zealand.</p>	<p>While the text search covers all names, this map only shows those found in or near New Zealand.</p>

Current Gazetteer webpage views

Visitors to New Zealand Gazetteer webpage
over the last 12 months



Overall increase
in **page views**

↑ **33.07%**

14,920 vs 11,212

Overall increase in
unique page views

↑ **24.71%**

11,852 vs 9,504

**Top five overseas
countries visiting
the page:**

United Kingdom

Russia

India

Australia

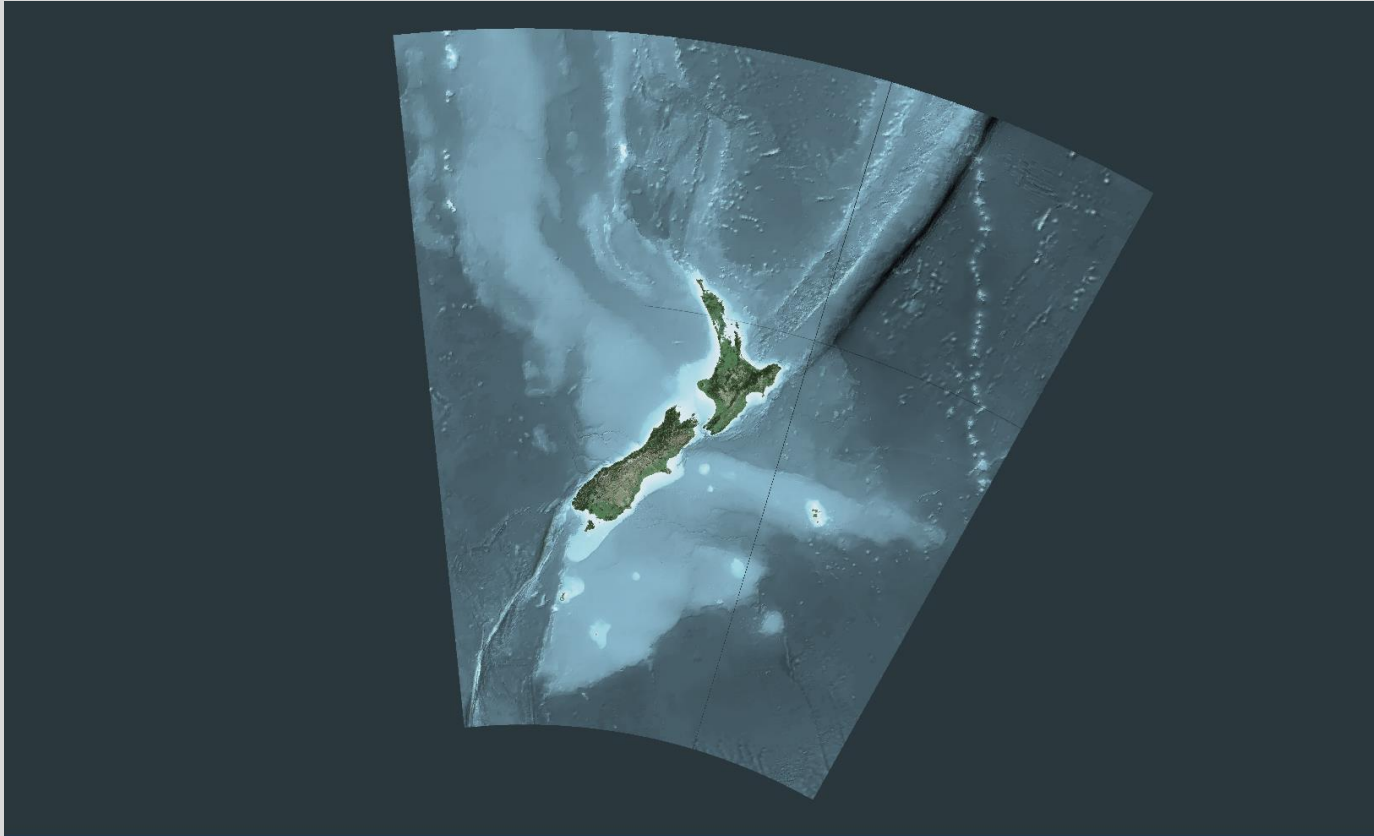
United States

Enhancements

- Advanced search
- Additional base map options
- Map of the whole of the NZGB's naming jurisdiction
- Appearance of all polygons and lines and their extents
- Map size to be larger on the webpage
- Improved search functionality (eg. 'stream')
- Zoom-in behaviour when selecting from the 'Matches found'
- Change 'Matches found' message
- Separate CSV download for names with macrons
- List all events associated with a name
- Zoom scale to show levels of spatial search
- Link to other names for a feature

New Gazetteer as a managed service

Colour tile around New Zealand



New Gazetteer as a managed service

<http://144.66.241.169:9876/> - basic search in New Zealand

Ab	Ab	Abel Tasman
Alt	Statu	Statu: Any



o Use
es Found 5



Download the full Gazetteer
To download geographic plac
New Zealand Gazetteer by th

New Gazetteer as a managed service

<http://144.66.241.169:9876/> - advanced search in New Zealand

Search interface for the New Zealand Gazetteer. The search term is "rak". The status is set to "Any" and the feature type is "Lake". The map shows New Zealand with three orange markers indicating the locations of the search results. The results list on the right shows three matches: Lake Rakatu, Southland; Lake Rakeinui, Wellington; and Rakaia Lagoon, Canterbury. The results are displayed in a table format with dashed lines separating the entries.

Search term: rak

Status: Any

Feature Type: Lake

Matches Found 3

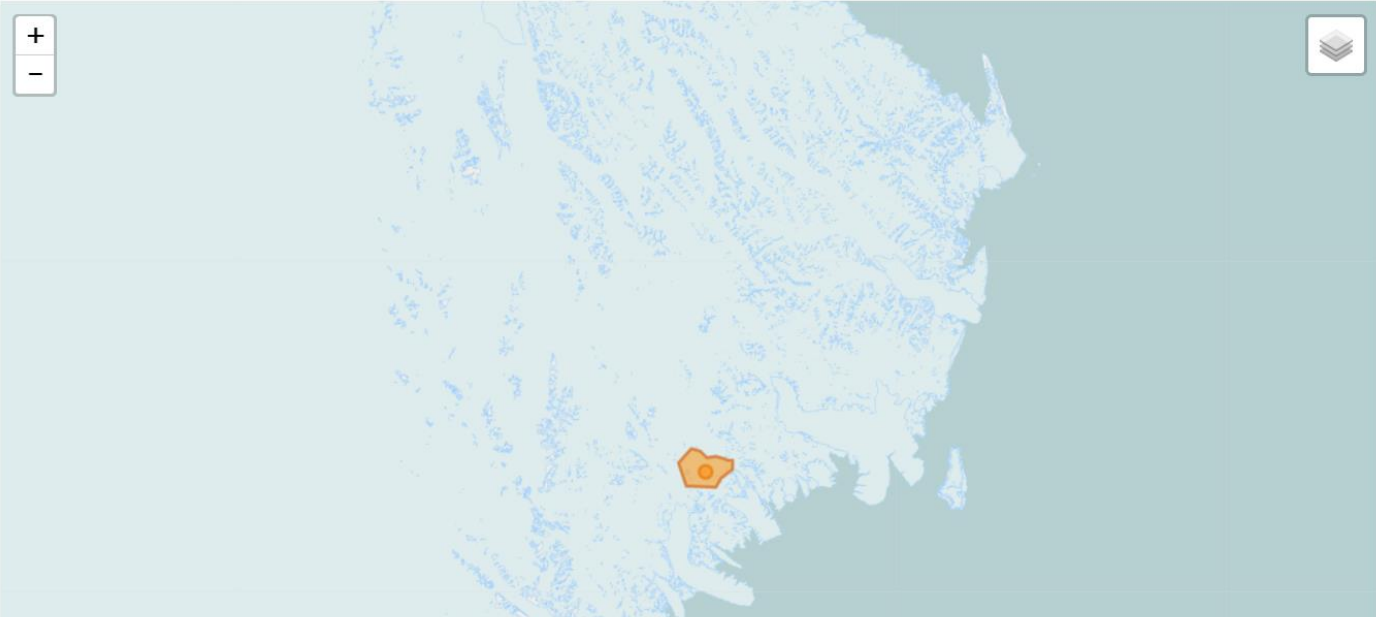
- * Official names are shown in bold.
- Lake Rakatu, Southland
- Lake Rakeinui**, Wellington
- Rakaia Lagoon**, Canterbury

Download the full [Gazetteer data](#) or [macrons on Māori place names](#) as a simple CSV file.
To download geographic place names data in a customisable GIS format go to [LINZ Data Service – NZ Place Names \(NZGB\)](#).

New Gazetteer as a managed service

<http://144.66.241.169:9876/> - Antarctica

Status: Feature Type:



How to Use

Matches Found 1

Details

Mount Rittmann
This is an official name
Current Status: Assigned
History/Origin/Meaning: Identified as a volcano by the 4th Italian Antarctic Expedition in the 1988/89 field season, and named by them in 1991 for the eminent volcanologist Alfred (Alfredo) Ferdinand Rittmann (1893-1980). Dr Rittmann was president of the International Association of Volcanology (IAV), later the International Association of Volcanology and Chemistry of the Earth's Interior (IAVCEI) from 1954 to 1963. During the 6th Italian Antarctic Expedition in the 1991/92 field season, fumaroles and ground heated by geothermal activity were discovered in a small volcanic crater.
Reference Information: LinZone file reference: GES-N15-07-15/304. USGS Reconnaissance Map 1:250K SS58-60/5.

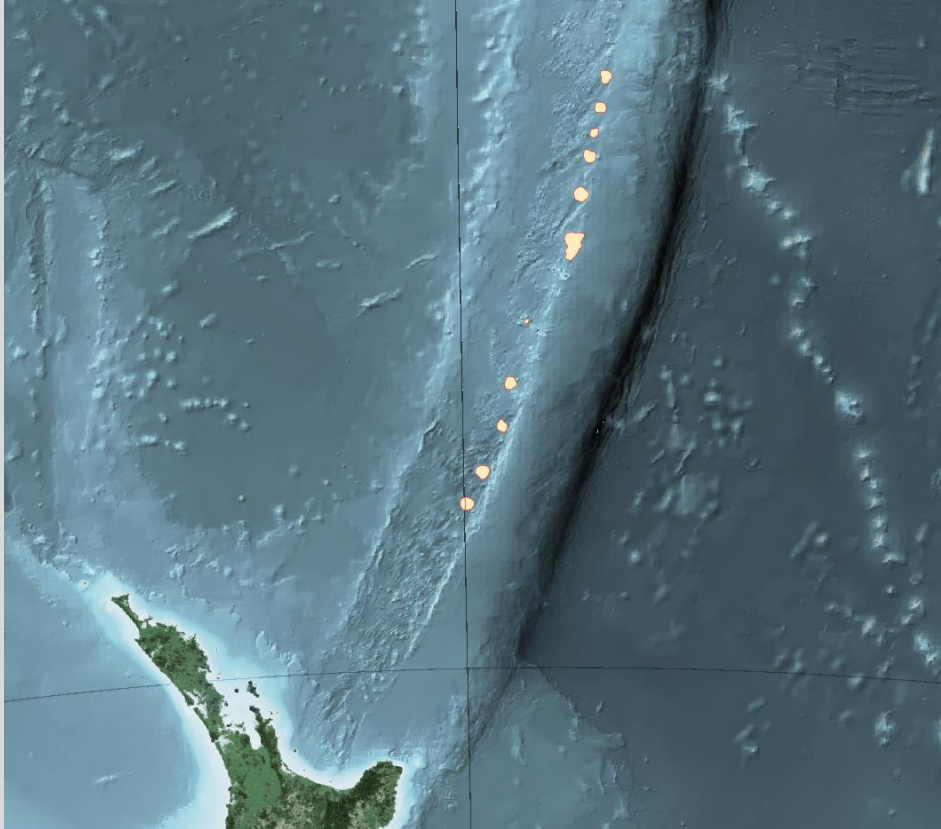
Event

Leaflet | © OpenStreetMap contributors

Download the full [Gazetteer data](#) or [macrons on Māori place names](#) as a simple CSV file.
To download geographic place names data in a customisable GIS format go to [LINZ Data Service – NZ Place Names \(NZGB\)](#).

New Gazetteer as a managed service

<http://144.66.241.169:9876/> - Kermadec seamounts



Key Messages

- Easy to find official geographical names with their extents
 - Predictive text searches
 - Spatial context map that is easy to navigate around
 - Location
 - Type of feature
 - Orthography
 - Status
 - Story (history, origin, meaning)
 - Actions affecting the name
 - Download in various formats
- To improve the customer experience when using the online Gazetteer to source information about official and unofficial geographic names
 - To introduce functionality that was excluded from the original online Gazetteer implementation

Questions?

wshaw@linz.govt.nz

