

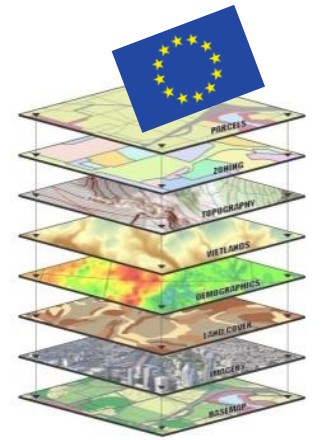


Creation of pan-European geospatial datasets – Experiences in real life from INSPIRE and beyond

Eurostat – E.4 – GISCO – H.I. Reuter



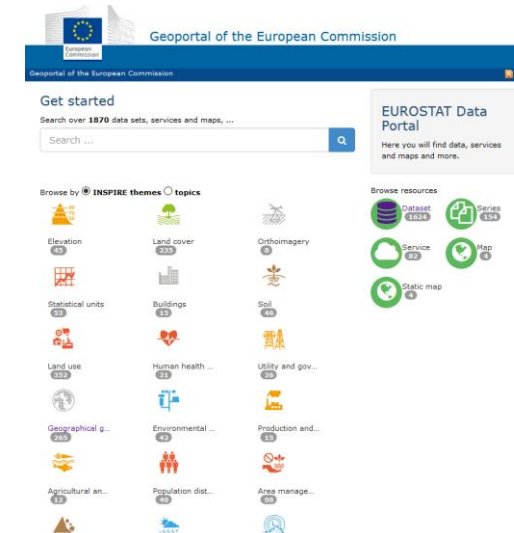
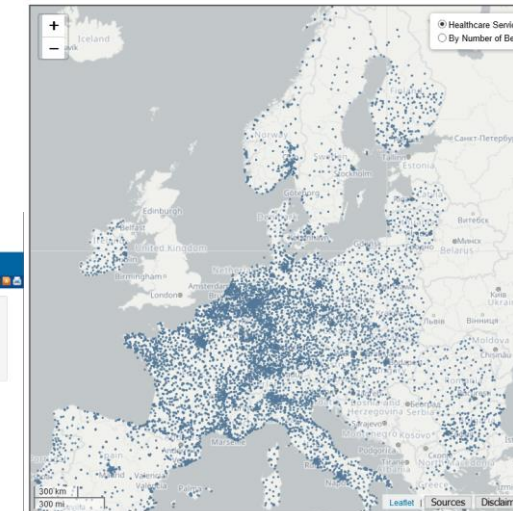
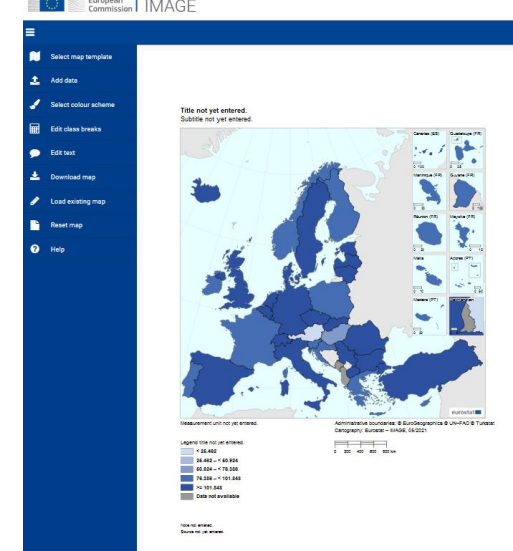
GISCO – The Geographical Information System of the Commission



- Permanent service of the European Commission (Eurostat)
- Role: Answers needs of European Commission, Eurostat and the ESS for geographical information at EU/national/regional levels.
 - Provision of GIS (reference) data, services and software,
 - Support cartographic and spatial analysis activities,
 - Coordinates commission-wide GI activities,
 - Stimulate the use of GIS to support commission activities,
 - Support activities on the integration of statistical and geospatial information.

Corporate Level Services

- Central Corporate Database central repository of GIS datasets
- Background Web Map Services nice background
- (Reverse) Geocoding Services Find a place on a map and from coordinates to a address/location
- Routing how to get from one location to another by car or railway
- ID service Get Codes/Geometries based on coordinates
- IMAGE make a quick map
- Dissemination get simple files
- Internal Metadata Portal search for Data

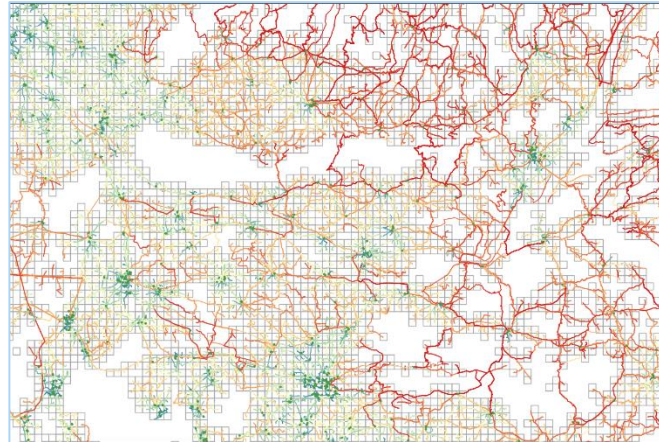


GISCO - the Geographic Information System of the Commission

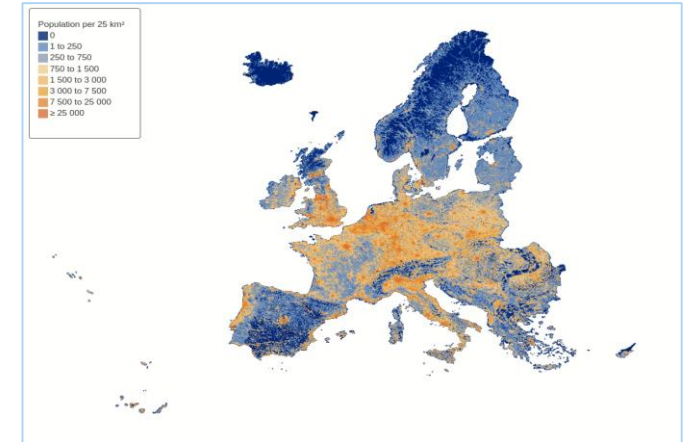
localise



analyse

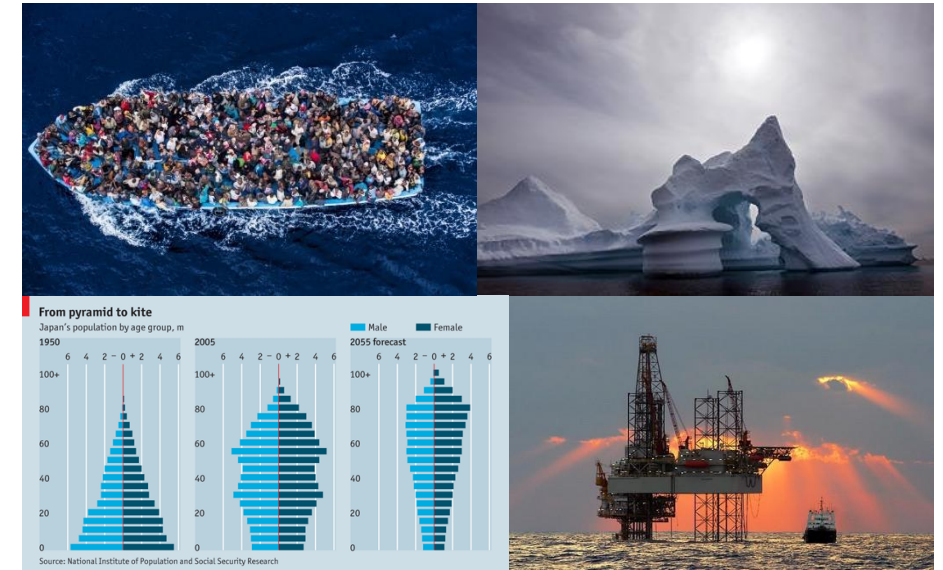


visualise



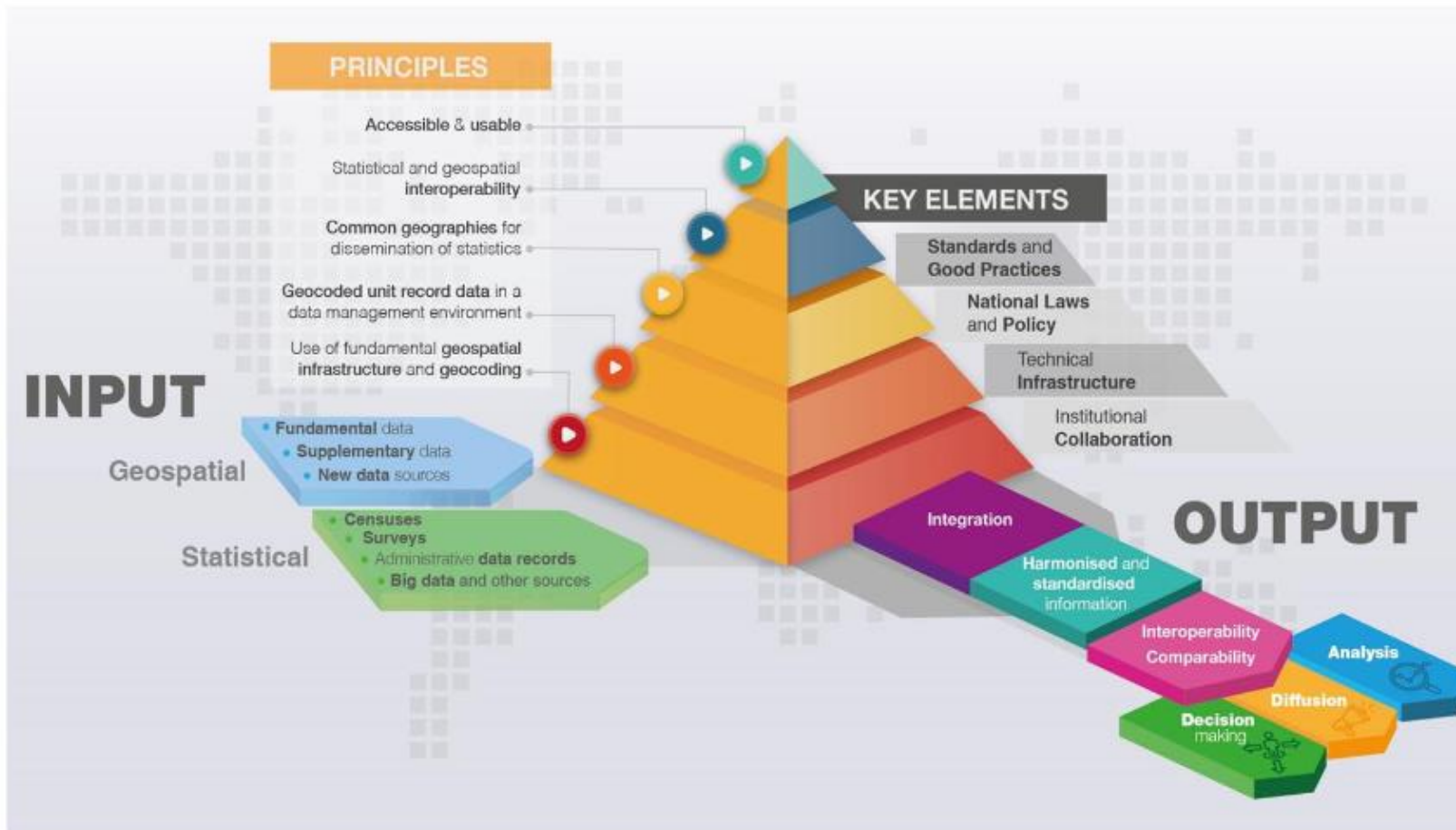
Application domains

- Urban planning
- Resource management
- Geo-marketing
- Transport & mobility
- Logistic
- Civil engineering
- Environmental impact assessment
- Emergency situation management
- Communication/cartography



- Demography
- Social sciences
- Epidemiology
- Agriculture
- Energy
- Defense/intelligence
- Policy analysis (support to decision making)
- Audit
- Etc.

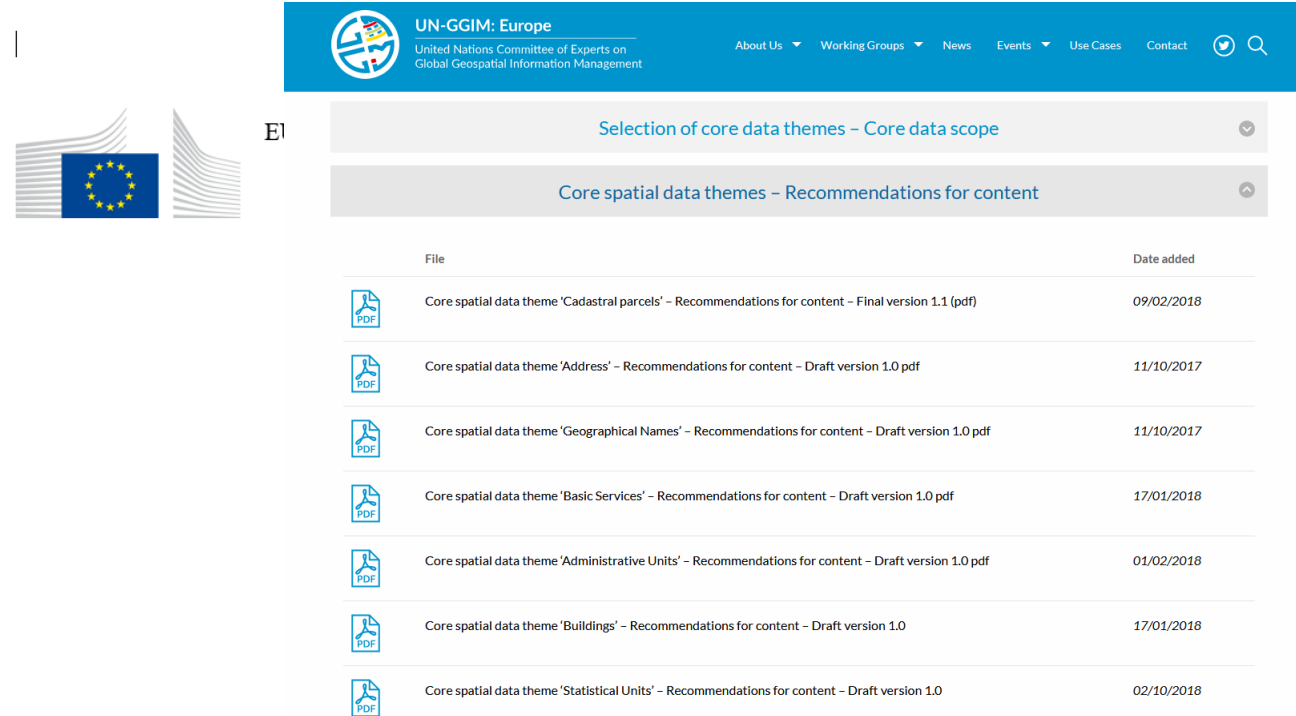
Global Statistical Geospatial Framework



EC Geospatial Data Requirements

Internal EC Consensus document outlining the EC needs for geospatial data

...to provide a consolidated and consistent overview of the European Commission user needs and set out cross-cutting and domain specific requirements of the European Commission for EU wide geospatial information and data products from Member States in support to Sustainable Development and other EU policies....



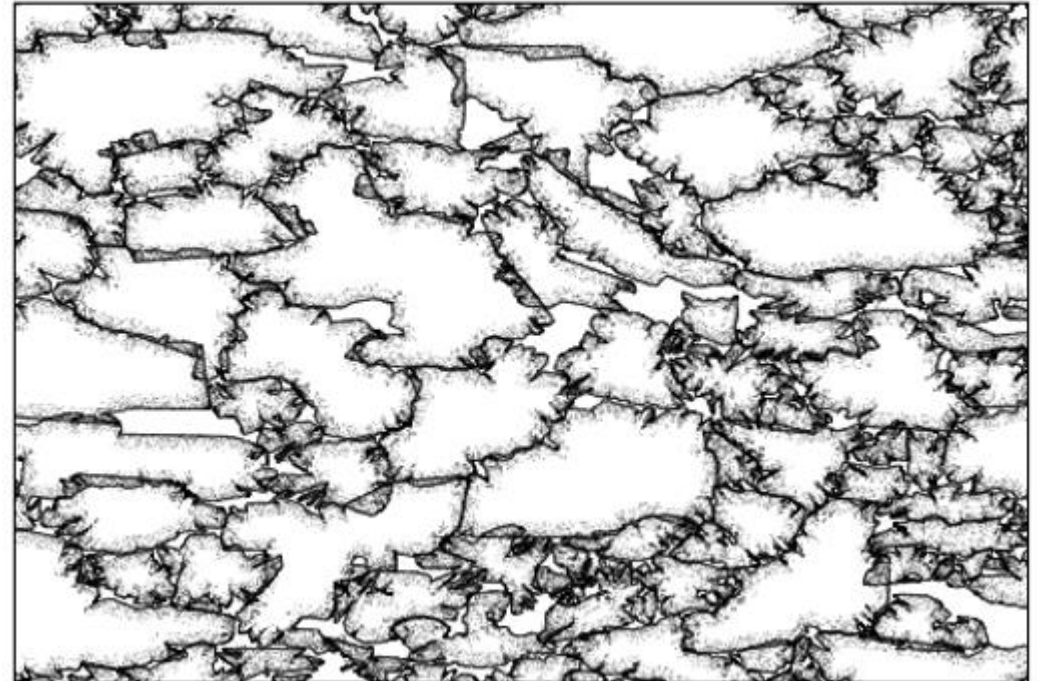
The screenshot shows the UN-GGIM Europe website interface. The header includes the UN-GGIM Europe logo and navigation links: About Us, Working Groups, News, Events, Use Cases, and Contact. The main content area is titled "Selection of core data themes - Core data scope" and "Core spatial data themes - Recommendations for content". Below this is a table listing various PDF documents with their file names and dates added.

File	Date added
Core spatial data theme 'Cadastral parcels' - Recommendations for content - Final version 1.1 (pdf)	09/02/2018
Core spatial data theme 'Address' - Recommendations for content - Draft version 1.0 pdf	11/10/2017
Core spatial data theme 'Geographical Names' - Recommendations for content - Draft version 1.0 pdf	11/10/2017
Core spatial data theme 'Basic Services' - Recommendations for content - Draft version 1.0 pdf	17/01/2018
Core spatial data theme 'Administrative Units' - Recommendations for content - Draft version 1.0 pdf	01/02/2018
Core spatial data theme 'Buildings' - Recommendations for content - Draft version 1.0	17/01/2018
Core spatial data theme 'Statistical Units' - Recommendations for content - Draft version 1.0	02/10/2018

Priority Geospatial Datasets for the European Commission

EC Geospatial Data Requirements

- Buildings (BU),
- Cadastral Parcels (CP),
- Addresses (AD),
- Administrative units (AU),
- Statistical Units (SU),
- Transport Networks (TN),
- Land Parcel Information System (LPIS)
- Postal Codes (PC)
- Utility and governmental services (US)



PC

General Requirements for data themes

- Unique and persistent identifier
- full geographic extent of the territory
- at the scale ~1: 5000-10.000 (or better)
- update frequency (incremental) should be once a year or better
- INSPIRE mechanism of life-cycle attributes and versioning.

IN, AG, QA, DI

Eurostats Workprogramm 2022

To bring Europe closer to citizens and regions, Eurostat will continue to make use of georeferenced data by systematically integrating and mainstreaming geospatial information into statistical production and **collecting more geospatial data, with a special focus on the core geospatial datasets** ⁽³⁾. This will allow for more detailed regional and local level statistics in areas such as demography, economy, environment, energy, transport and agriculture.

Management plan 2022

EUROSTAT

⁽³⁾ These are as defined by the Commission inter-service group on Geographic Information (COGI): administrative units, statistical units, buildings, cadastral parcels, addresses, transport networks, land parcel information system, postal codes, utility and governmental services.

Workflow for pan European GI Datasets

Computer Systems

INSPIRE Geoportal



data.europa.eu

Kohesio: discover EU projects

Human Intelligence

Local Contacts

Reports



NSI/NMCAs

Social media



Research projects



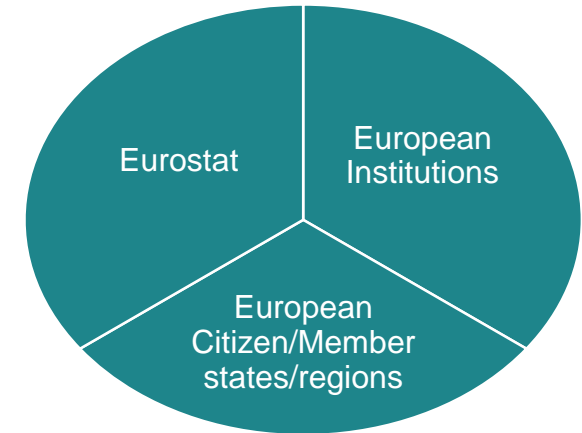
ETL

Analysis in Incoming WIKI
Import into Database
QAQC Cycles,
Integration, Generalisation,
Topological Checks,
Feedback with MS

.....

Majority of work

Analysis / Dissemination



GISCO ReferenceDB

[Website](#) [Tercet](#)

Services: [Download](#),
[AddressAPI](#), [ID](#), [VectorT](#),
[OGC-API](#)

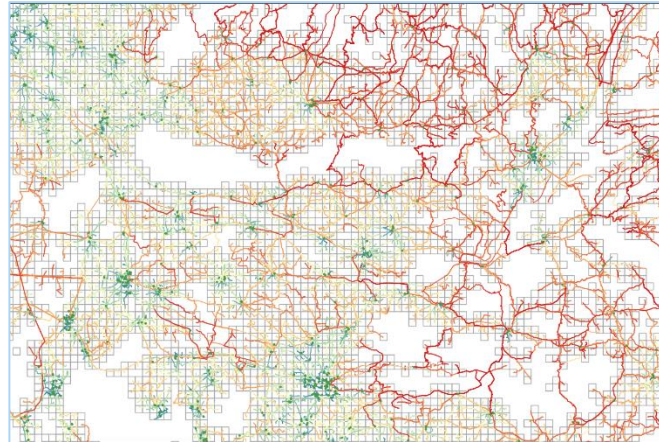


GISCO - the Geographic Information System of the Commission

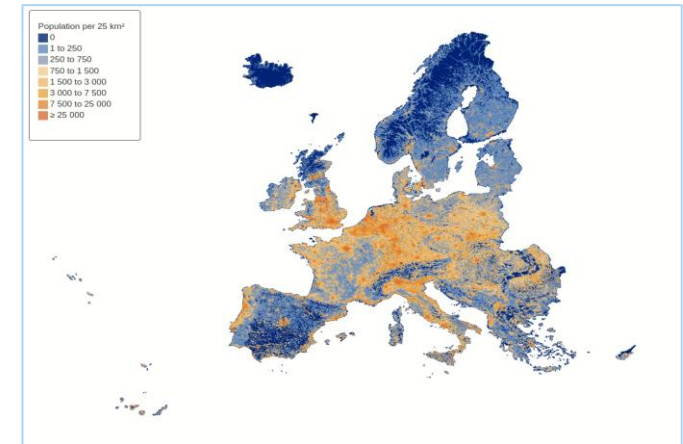
localise



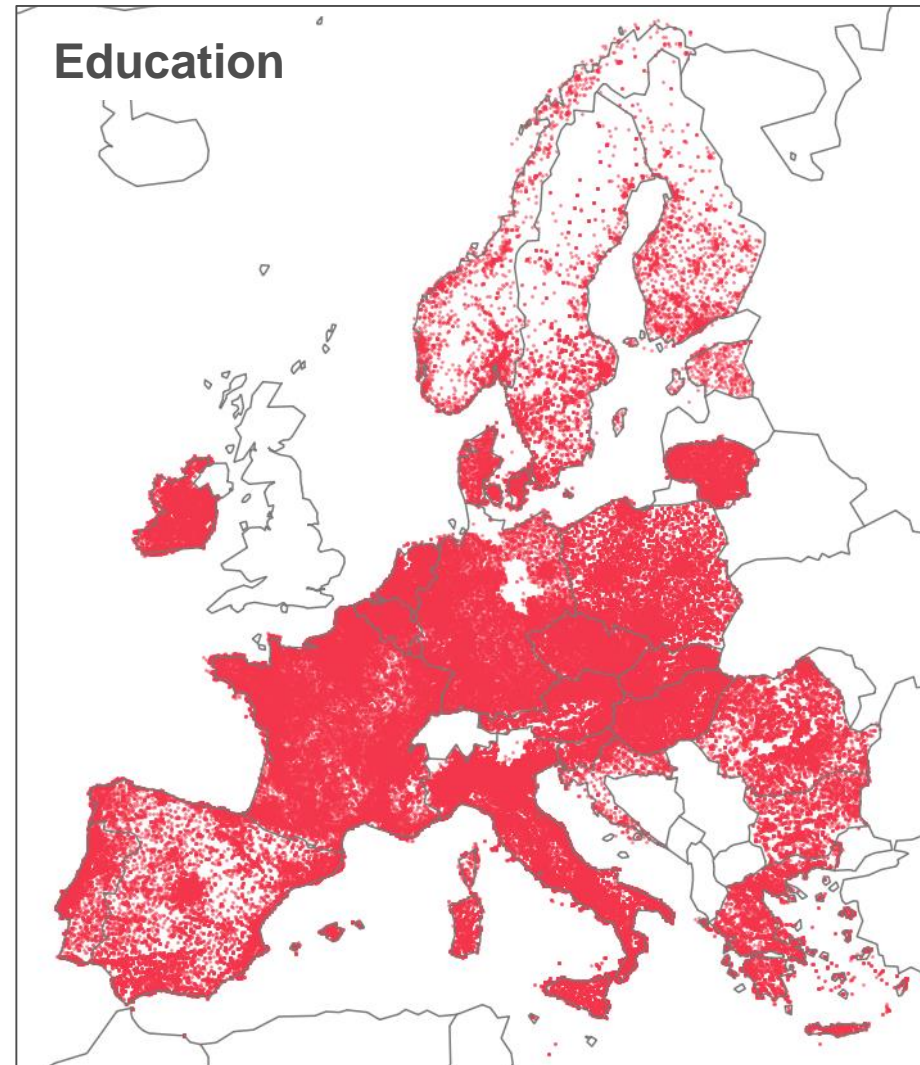
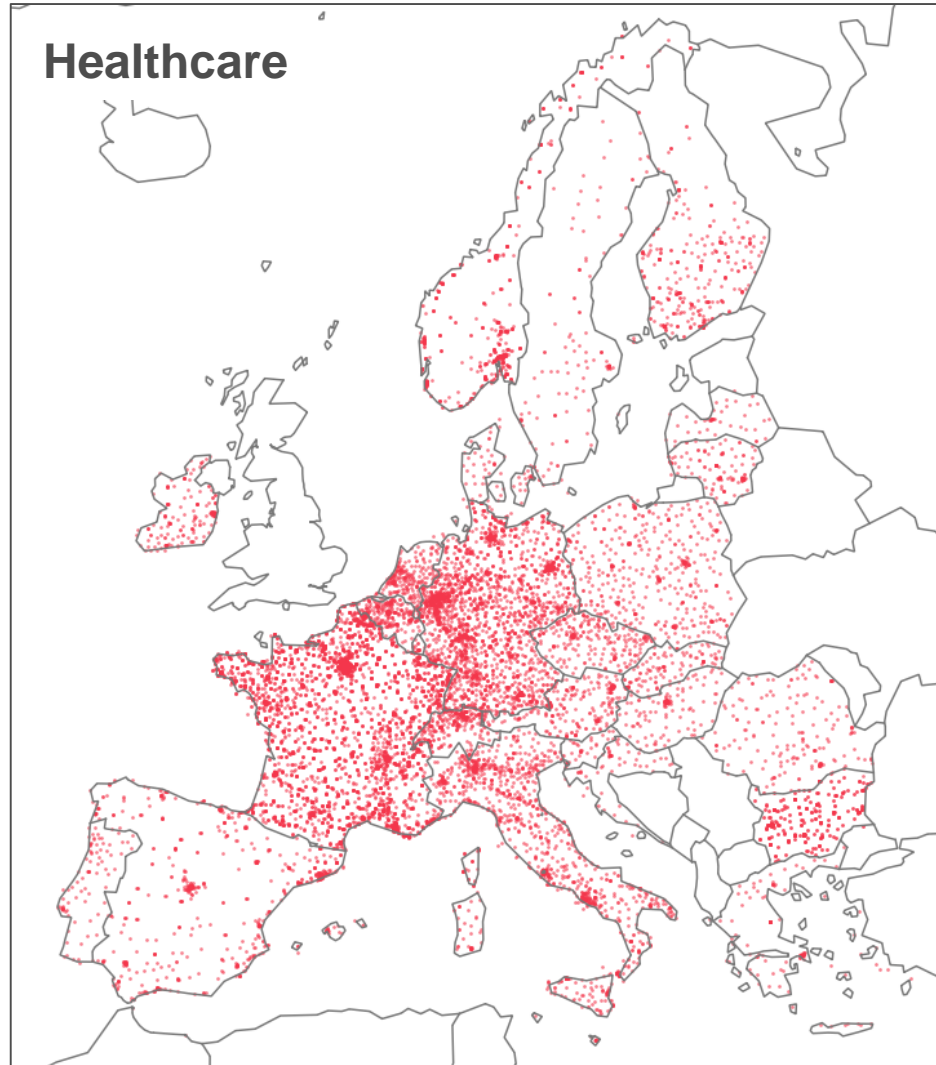
analyse



visualise



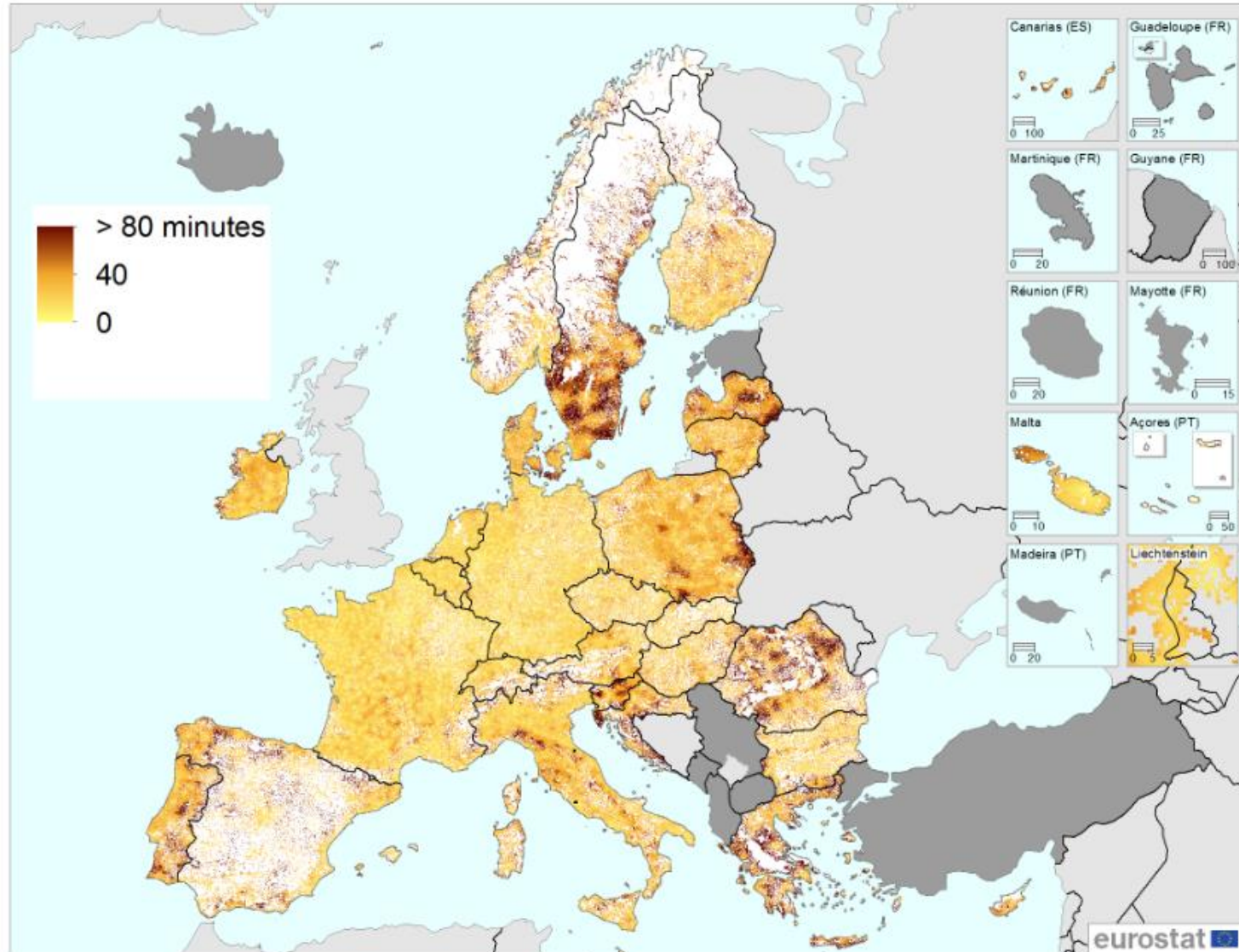
Data & systems: Utility services, examples



<https://ec.europa.eu/eurostat/web/gisco/geodata/reference-data/healthcare-services>

Geospatial analysis, aggregating into statistics (1/3)

Access to Healthcare - Travel time (minutes) by 1km grid

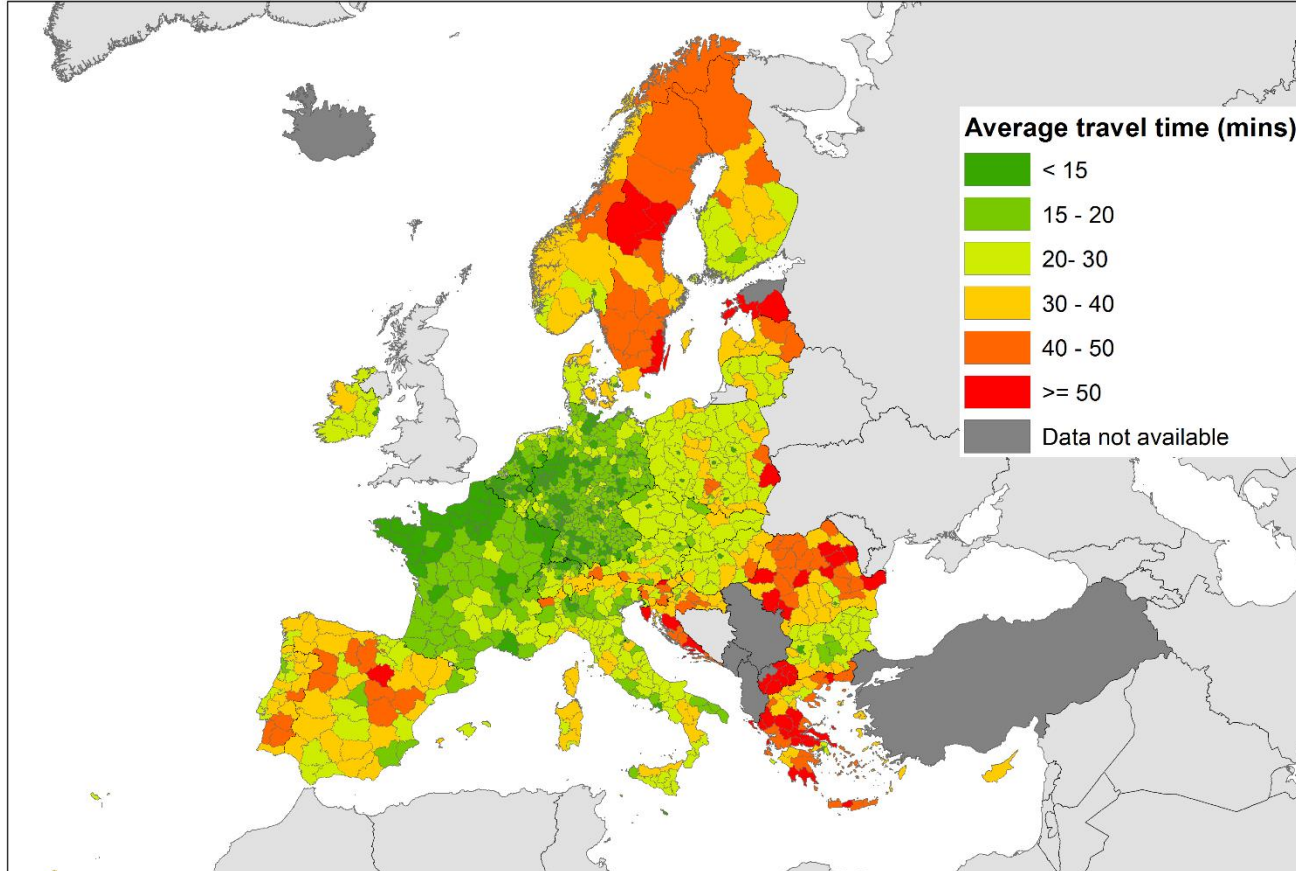


0 150 300 450 600 km

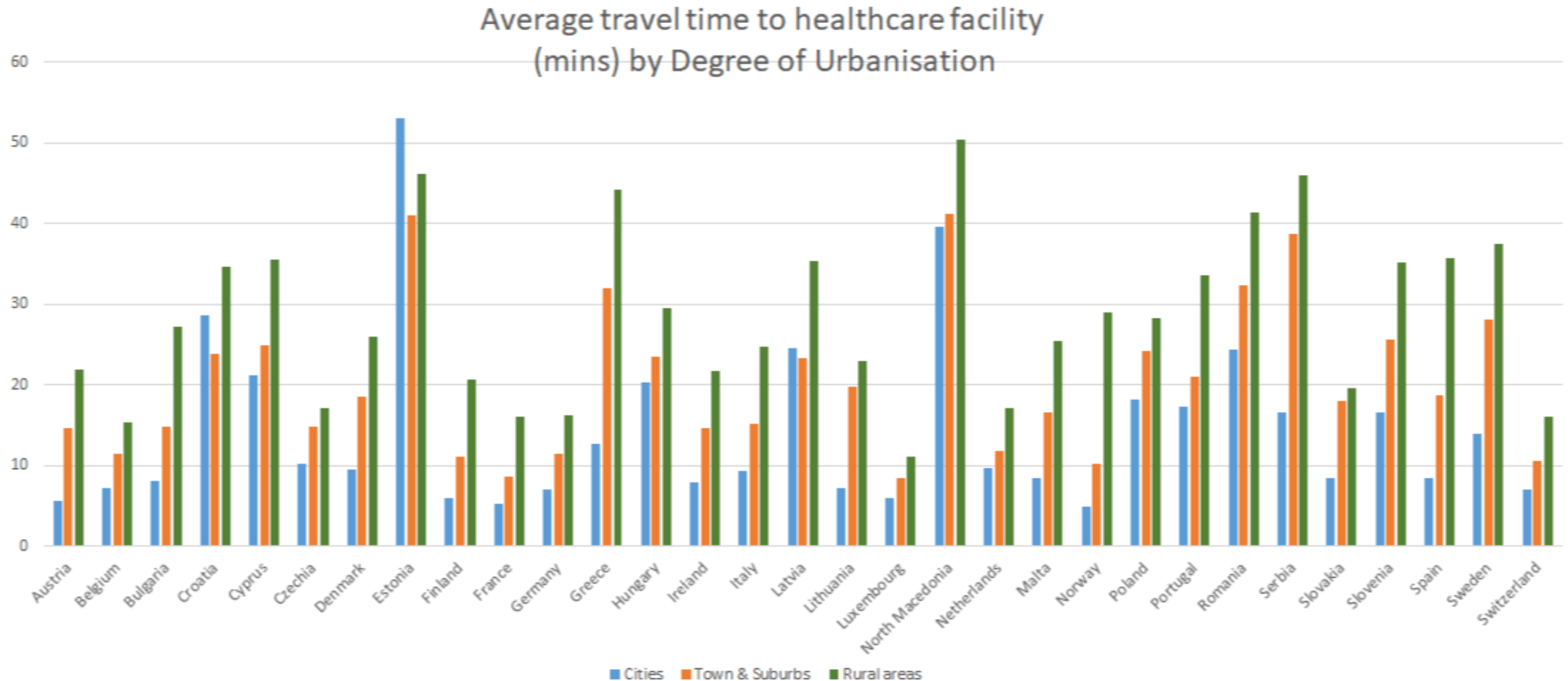
Administrative boundaries: © EuroGeographics © UN-FAO © Turkstat
Cartography: Eurostat — GISCO, 10/2021

Geospatial analysis, aggregating into statistics (2/3)

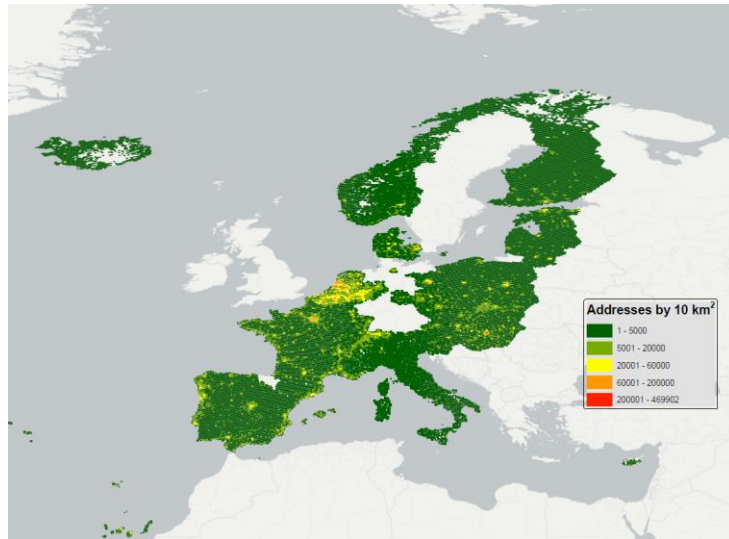
Average Travel time to Hospital (NUTS3)



Geospatial analysis, aggregating into statistics (3/3)



Data & systems: GIS reference data – AD - BU – CP - AU – TN



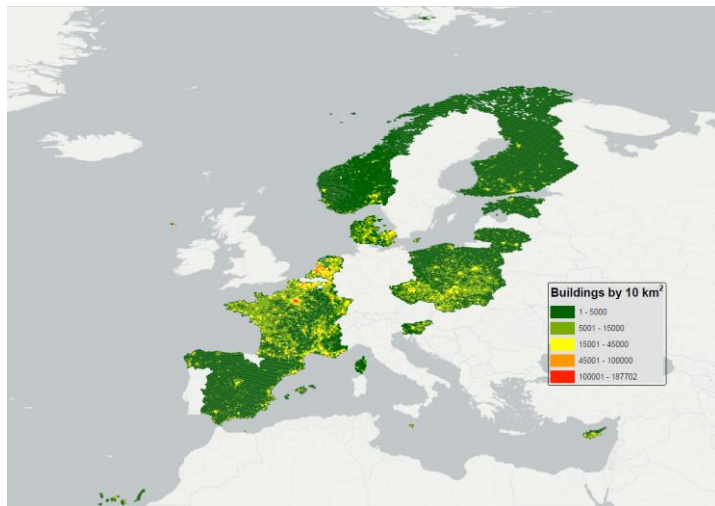
Addresses

tackles the issue of non-validated data Address data entry (1 – 10 - 100 rule)

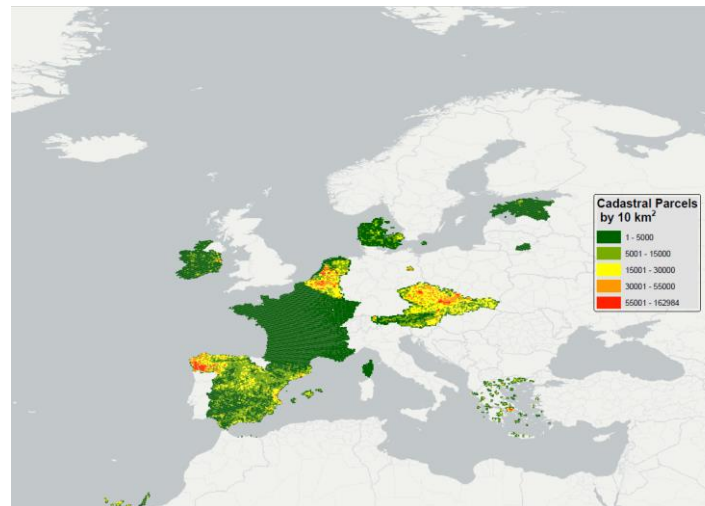
<https://gisco-services.ec.europa.eu/addressapi>



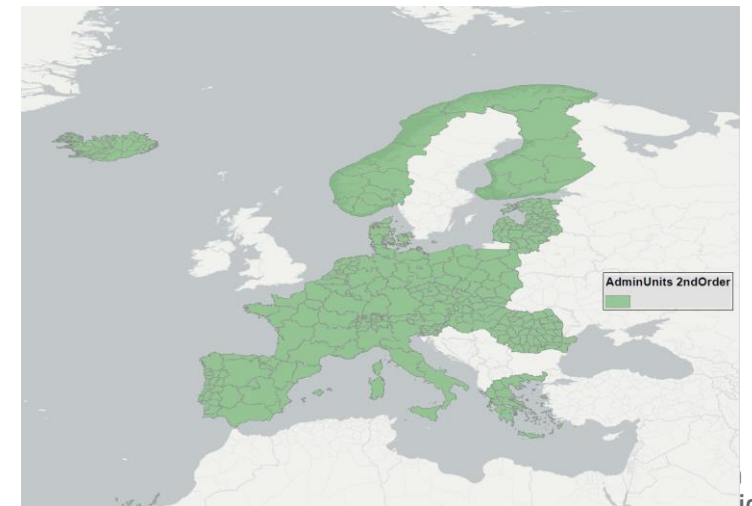
Transport Networks



Building Units



Cadastral Parcels



Administrative Units

Address API

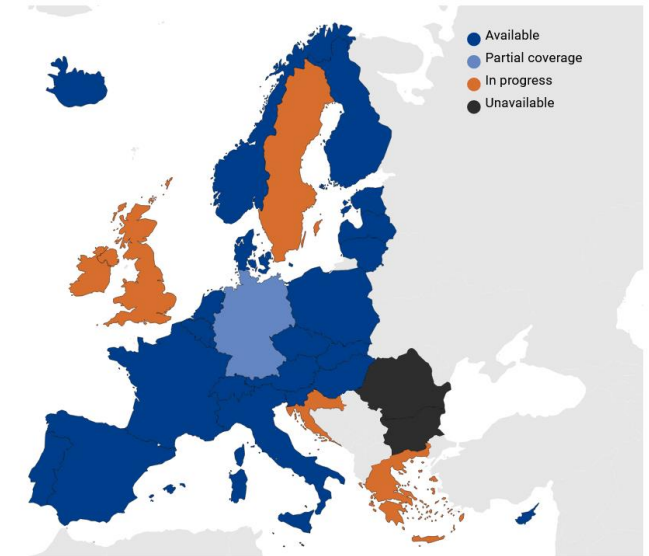
- Authoritative Address Datasets (AD) from MS responsible organisation
- Ingested in INSPIRE AD schema -> simplified for performance
- Tackles the issue of non-validated data entry (1 – 10 - 100 rule)
- Vision: any address entered in an EC/ESS system {c,w,sh}ould be validated by AddressAPI
- Based on eUI – API agnostic - [OpenAPI](#)

Welcome to the Address API developed by GISCO!

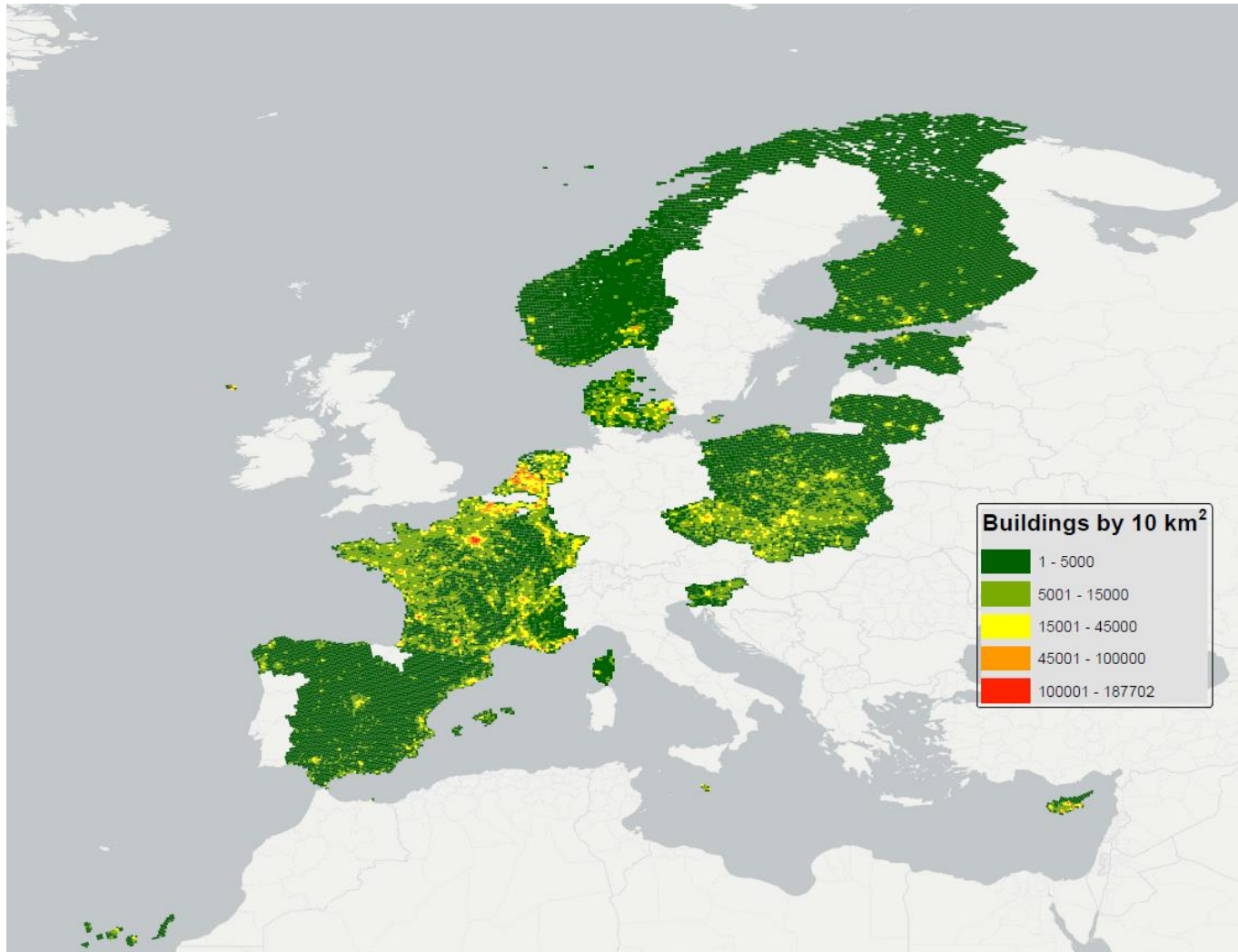
It aims to provide a RESTful API which allows developers to carry out both geocoding and reverse geocoding using a pan-european address database. Check out the swagger page [here](#).

Coverage

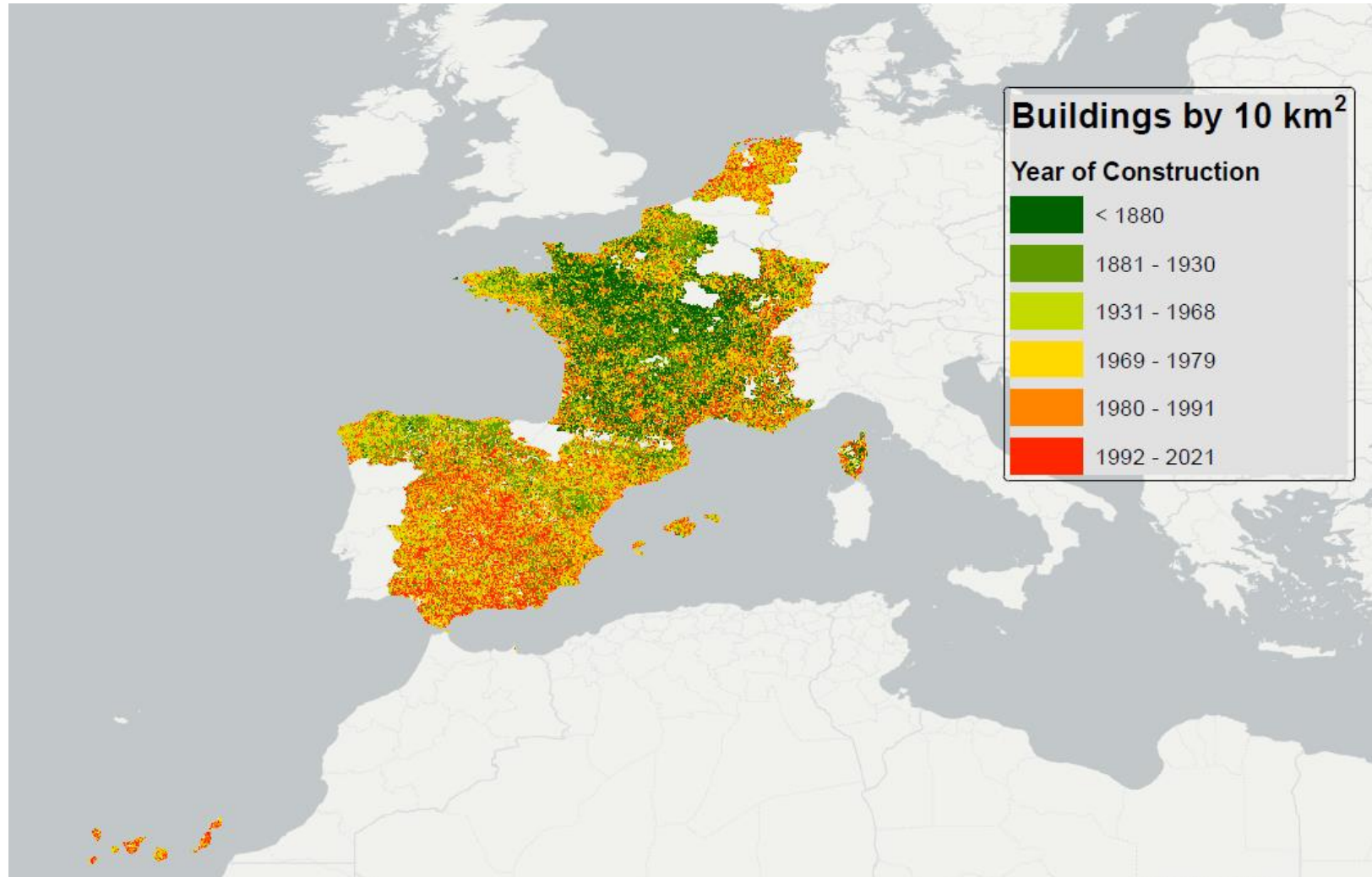
The map below shows the current coverage of the addressAPI.



Buildings Example (I)



Buildings Example (II)



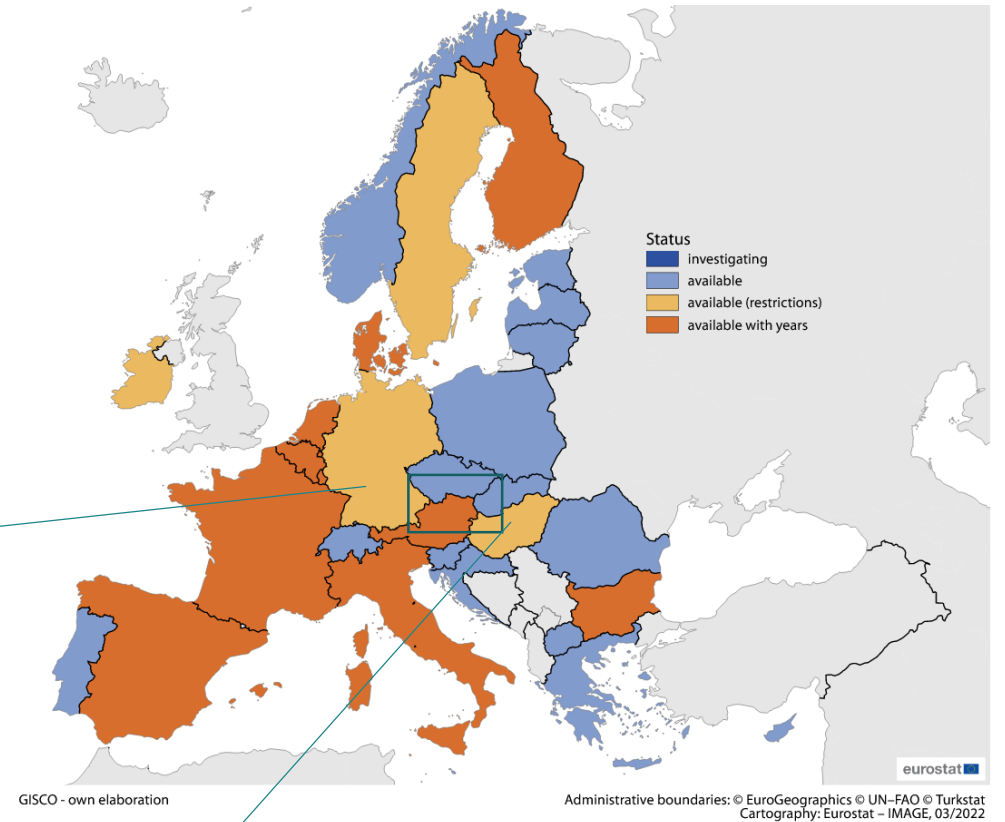
OrthoImagery (I)

- latest snapshot of OI from MS organisation
- If time series available – will be supported
- Depends on MS service performance + data requirements
- Up to 0.2m



OrthoImagery Status March 2022

Available in Development Instance

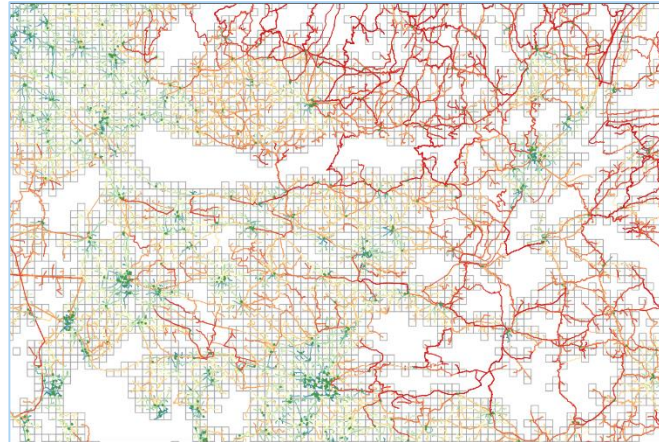


GISCO - the Geographic Information System of the Commission

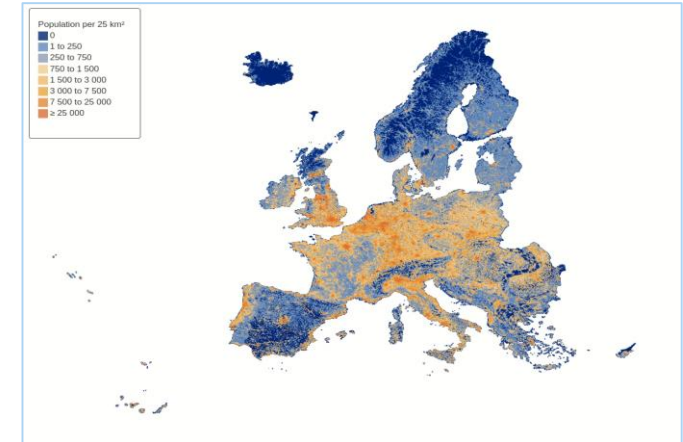
localise



analyse



visualise



Observations

Data exists but are not documented in Metadata systems (neither European or MS ones) or directly *hidden*.

Several datasets with various specifications exists for the same theme maintained by different organisations? Who is the master?

Dispersed datasets per country without a central authority

Depending on organisations - Administrative hurdles / Lock down mentality – not user centric

Officially data do not exist, but commercial datasets exist for the same area.

Outdated (temporally), semantically or resolution reduced data (e.g. content, scale)

- Requirement: Data are documented in INSPIRE/ EuropeanDataPortal/National Portals
- Requirement: Coordination inside the MS
- Requirement: Central Access/Distribution Point
- Requirement: Data Access for EC
- Requirement: Public Administration data **MUST** exist and be accessible
- Requirement: update data at least once a year, full content

Observations

- Eurostat works on a range of topics for the creation of pan-European data
- Depending on the datasets a) European Databases are created or b) datahub pointing back to MS resources to provide services internally/externally
- Code of conduct for Geospatial Data is required (e.g. PIDs, topology across domain, time-series) and enforced....
- Pan European progress is hampered by e.g. a) available datasets, b) stability of services, c) performance of services or d) at point of use restrictions due to financial demands.
- API and Bulk Downloads are needed and support various user communities –
- We (the GIS community) need to move from spatial/special into the main stream usage...

Recap

- GISCO – who we are and what we do
- Pan-European Dataset creation – Requirements – the WHY
- Pan-European Dataset creation – Requirements – the HOW
- Pan-European Dataset creation – Status update
- Pan-European Dataset creation – Observations...

Thank you

Contact: estat-gisco@ec.europa.eu



© European Union 2022

Unless otherwise noted the reuse of this presentation is authorised under the [CC BY 4.0](https://creativecommons.org/licenses/by/4.0/) license. For any use or reproduction of elements that are not owned by the EU, permission may need to be sought directly from the respective right holders.



Systems: address API



Address	
House Number	14
Street	AINAVU IELA
City	CĒSIS
Province	CĒSU NOV.
Country	LV
Postcode	LV-4101
NUTS Codes	
NUTS 0	LV
NUTS 1	LV0
NUTS 2	LV00
NUTS 3	LV008
Coordinates	
x	25.263817262975003
y	57.318837264921555
Open Location Code	9G978797+GGP
Feedback	
Issue with this address?	Contact GISCO

Solves one ISSUE:

Reference data set for address verification/validation stored in XX+ systems of the EC

Tackles the issue of non-validated data entry (1 – 10 - 100 rule)

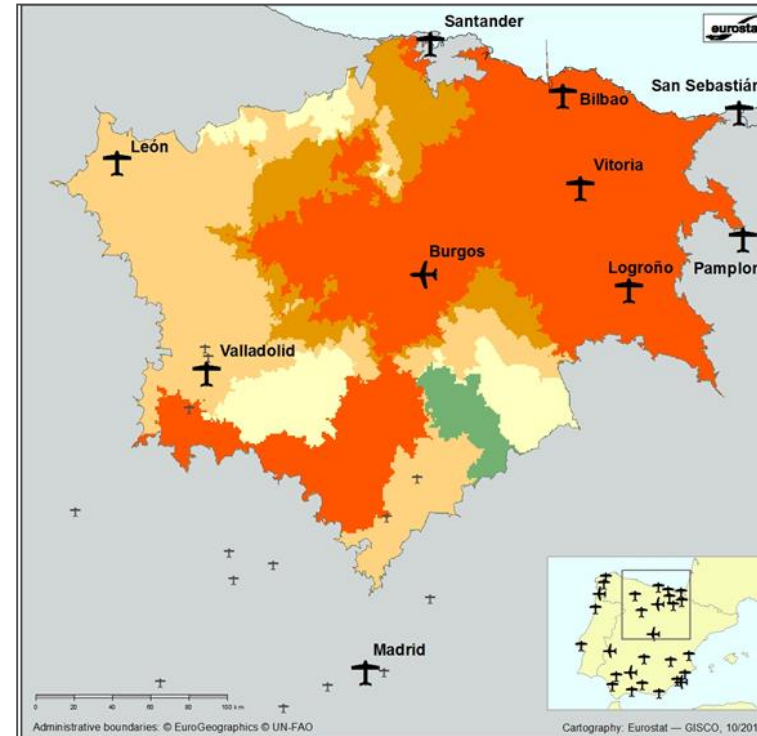
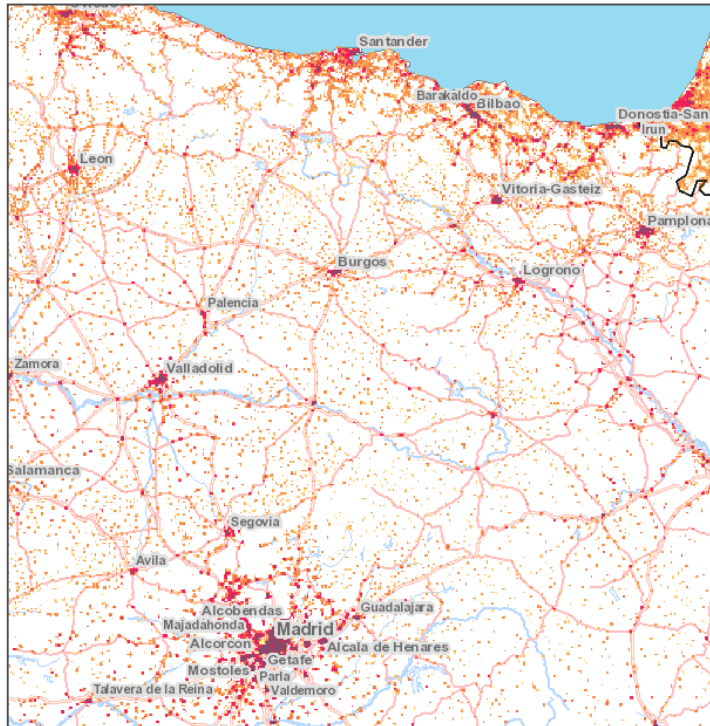
URL: <https://gisco-services.ec.europa.eu/addressapi>

Example of spatial analysis (1)



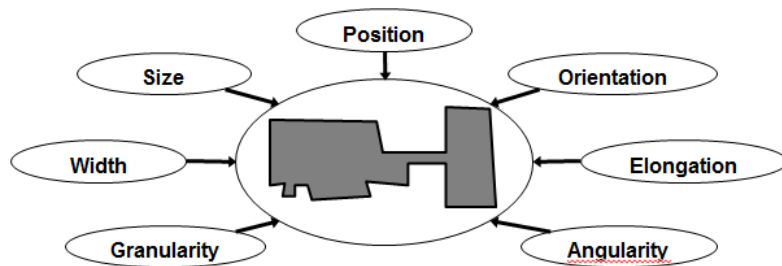
EUROPEAN
COURT
OF AUDITORS

- Airport catchment analysis

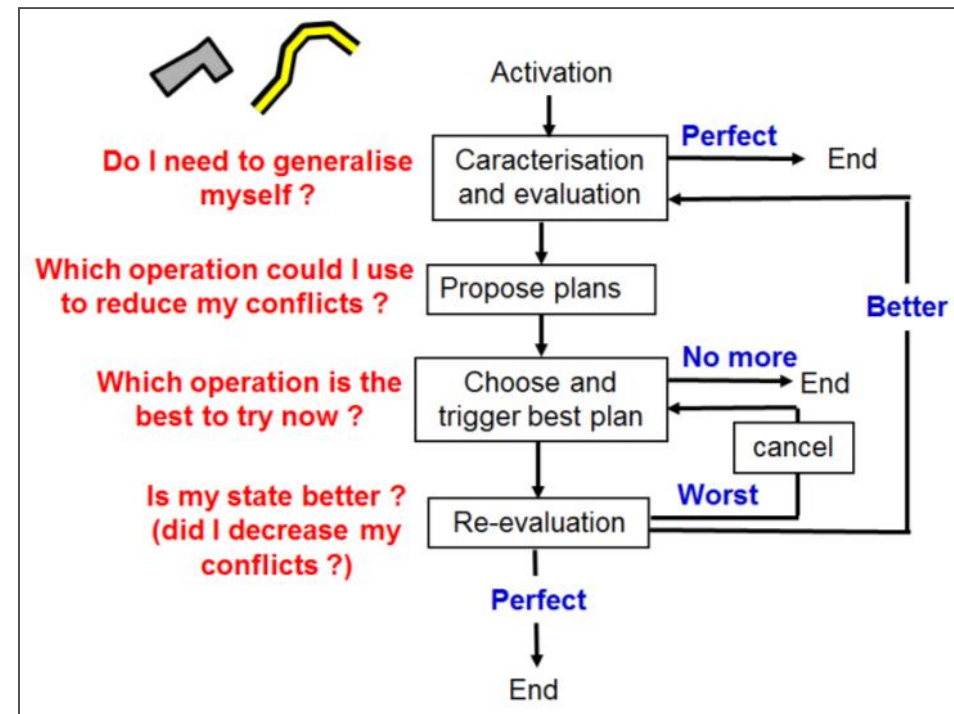


Agent-based generalisation

Target state formalised as constraints at object level...



...constraints satisfied iteratively at object level



Analytics Codes

- <https://github.com/eurostat/JGiscoTools>
- <https://github.com/eurostat/RegionSimplify>
- <https://github.com/eurostat/GridMaker>
- <https://github.com/eurostat/GeoDiff>
- <https://github.com/eurostat/happyGISCO>

Java library for the manipulation of geospatial and statistical data

simplify vector geographical datasets representing tessellations

Produce grid geometries for statistics. As GIS vector datasets.

Analyse differences between two versions of a vector geospatial dataset

Simple pythonClient on top of GISCO services